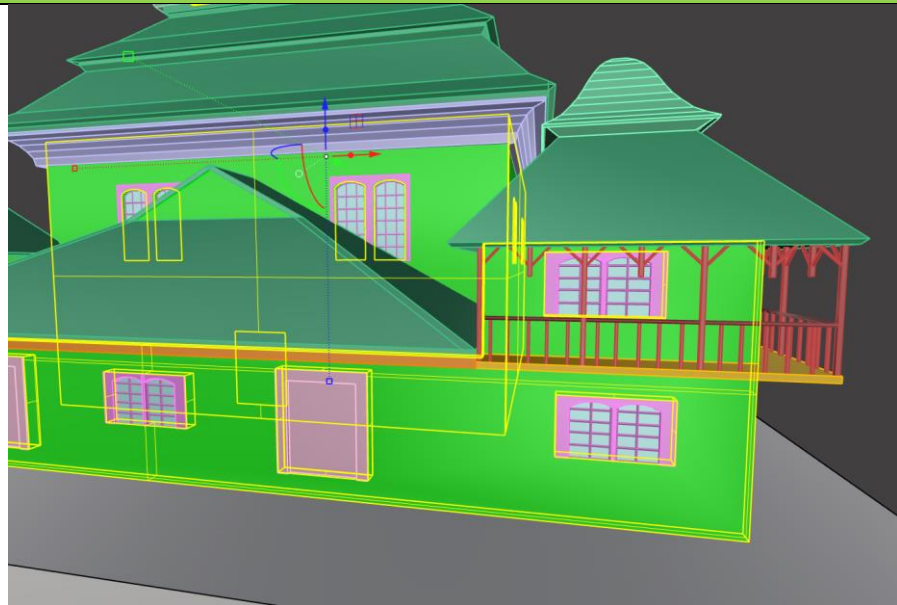
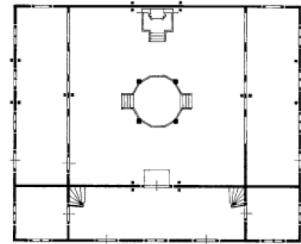


Bearing wall

Reconstructed object

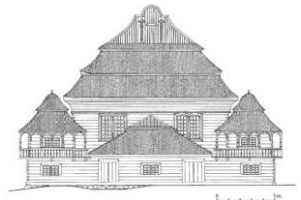


Wolpa_Piechotkowie_rzut_1.jpg



Used sources

Wolpa_Piechotkowie_elewacja.jpg



Wolpa_Piechotkowie_zdj_1.jpg



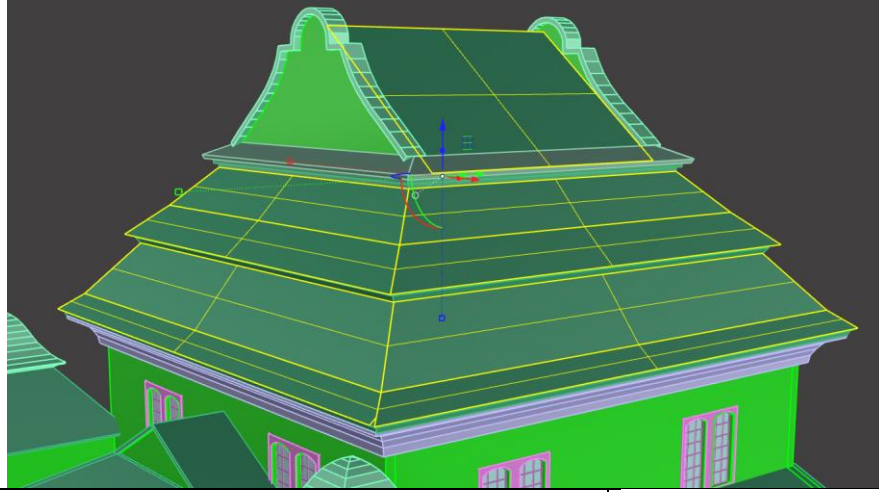
Argumentation and evaluation of the uncertainty

the picture and drawings represent the synagogue in the times of its existence

03- inferences or sources directly related to the object

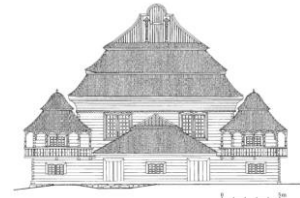
Roof - type a

Reconstructed object

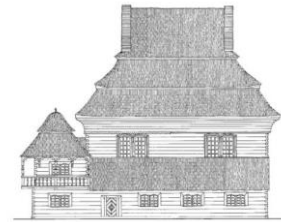


Used sources

Wolpa_Piechotkowie_elewacja_W.jpg



Wolpa_Piechotkowie_elewacja_S.jpg



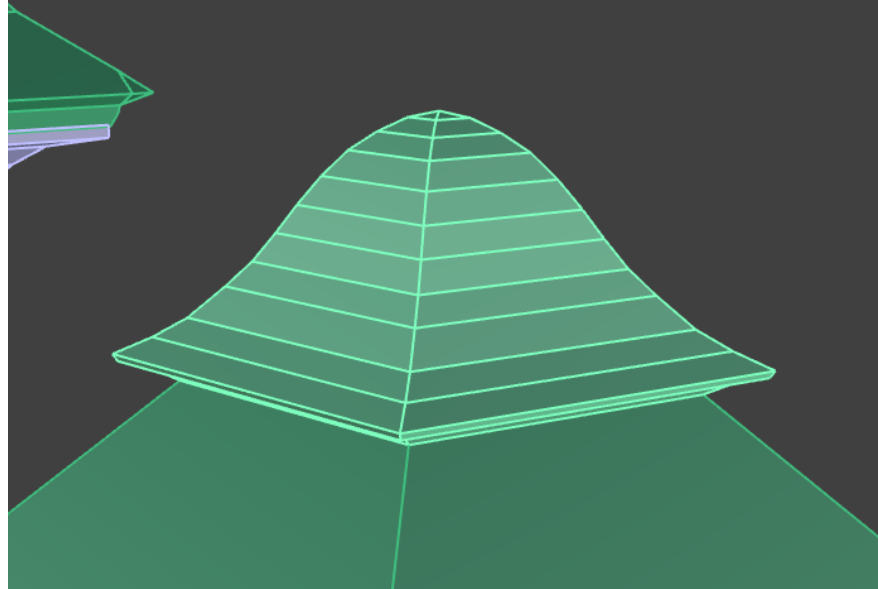
Argumentation and evaluation of the uncertainty

the drawings represent the synagogue in the times of its existence

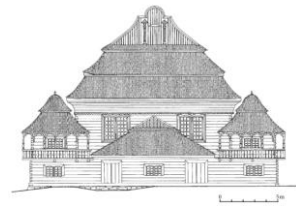
03- inferences or sources directly related to the object

Roof type b

Reconstructed object



Wolpa_Piechotkowie_elewacja_W.jpg



Used sources

Wolpa_ZAP_zdj-1.jpg

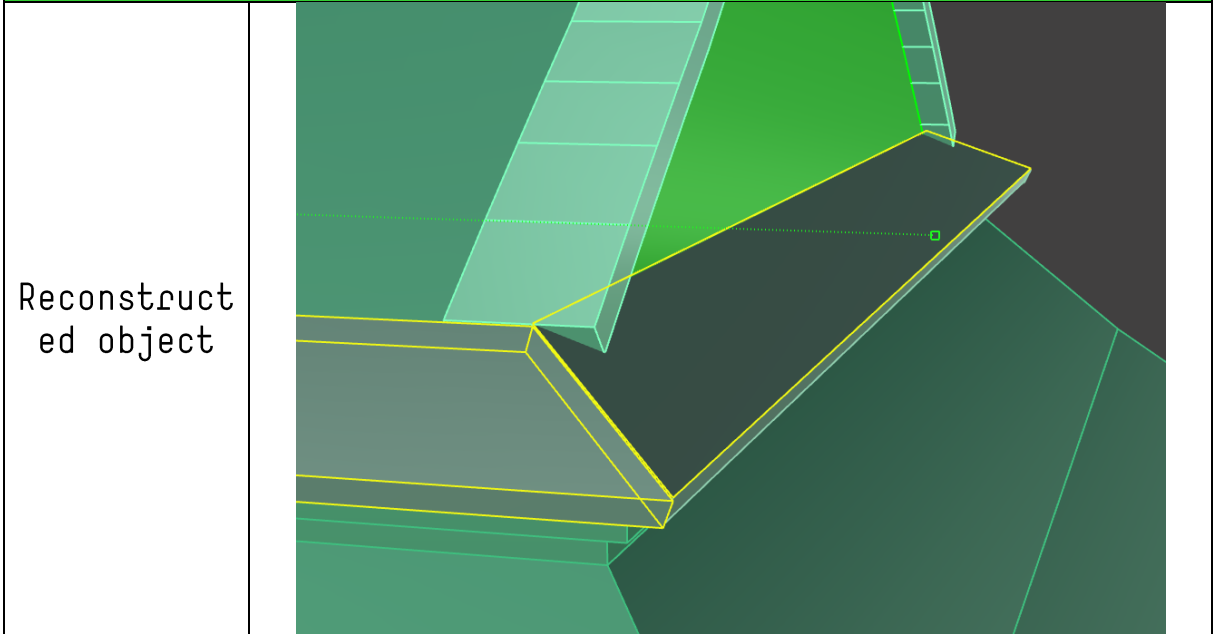


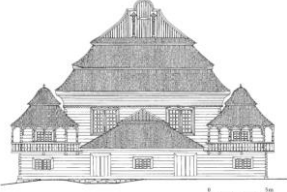
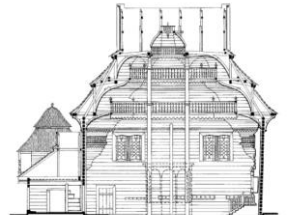
Argumentation and evaluation of the uncertainty

the picture and drawings represent the synagogue in the times of its existence

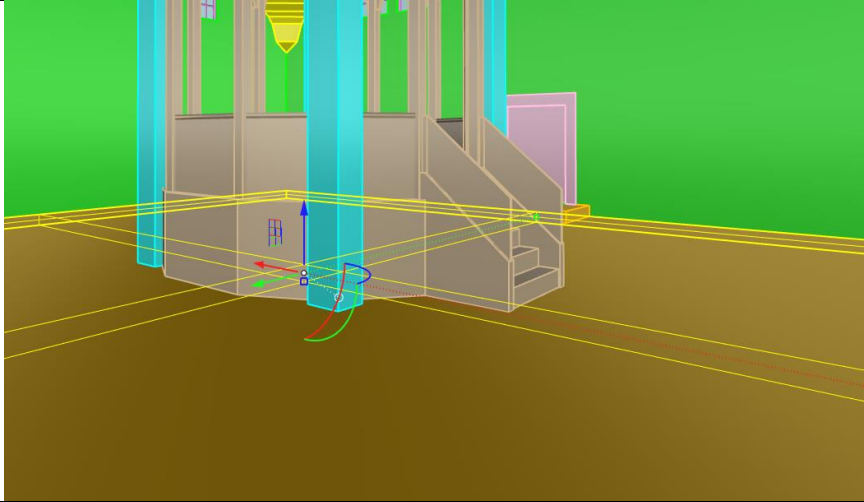

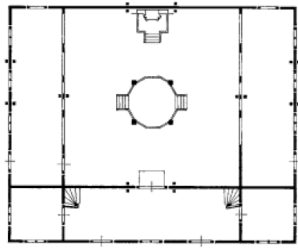
03- inferences or sources directly related to the object

Roof - type c



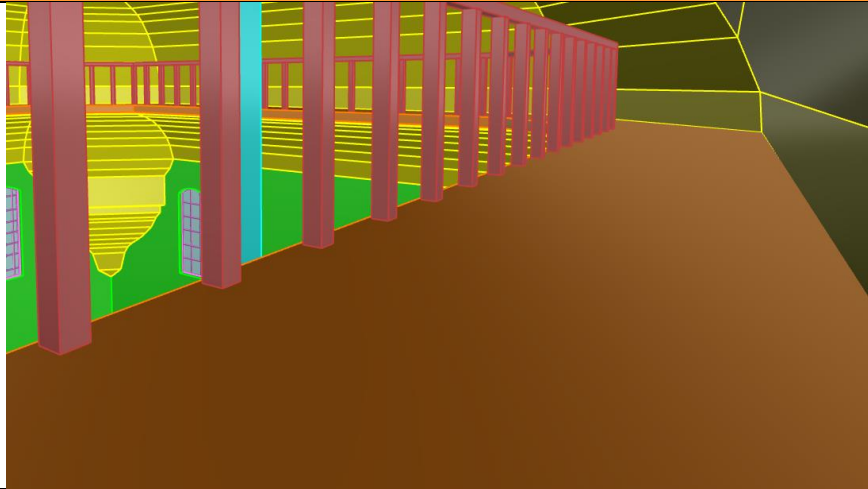
Used sources	Wolpa_Piechotkowie_elewacja-W.j pg	
	Wolpa_Piechotkowie_przekroj-2.j pg	

Argumentati on and evaluation of the uncertainty	the drawings represent the synagogue in the times of its existence	03- inferences or sources directly related to the object
--	--	--

Floor		
Reconstruct ed object		
Used sources	Wolpa_polichromia_zdj-1.jpg 	
	Wolpa_Piechotkowie_rzut.jpg 	
Argumentati on and evaluation of the uncertainty	<p>the plan is based on drawings representing the synagogue in the times of its existence; the texture is hypothetical, based on a project of the polychromy reconstruction</p>	<p>03- inferences or sources directly related to the object [shape], 01- hypothesis [texture]</p>

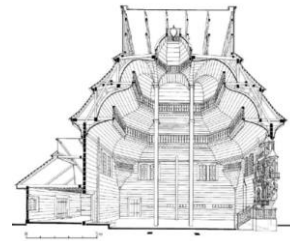
Ceiling

Reconstructed object



Used sources

Wolpa_Piechotkowie_przekroj_3.j
pg

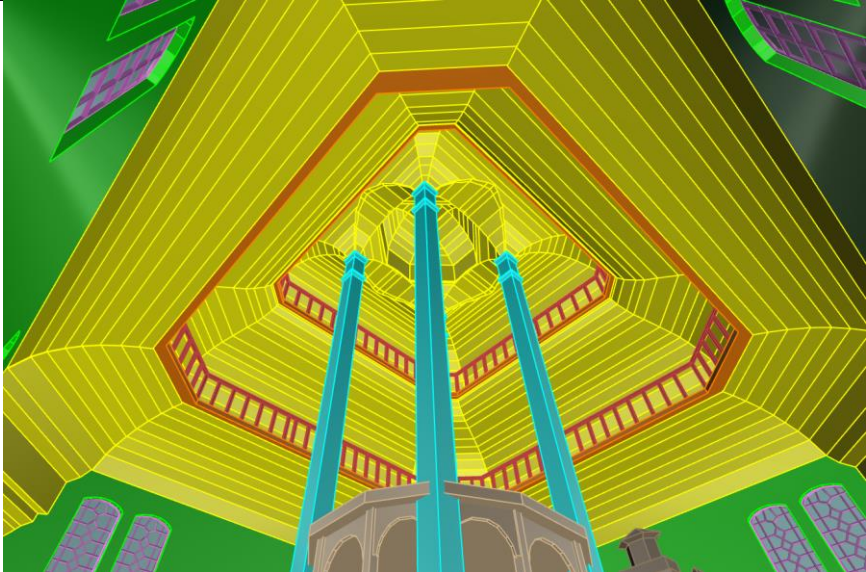
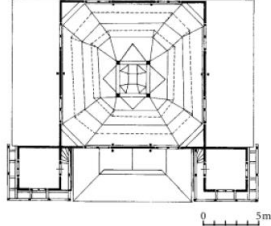
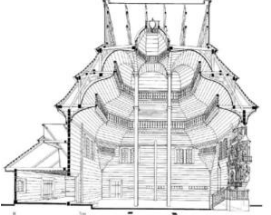



Argumentation and evaluation of the uncertainty

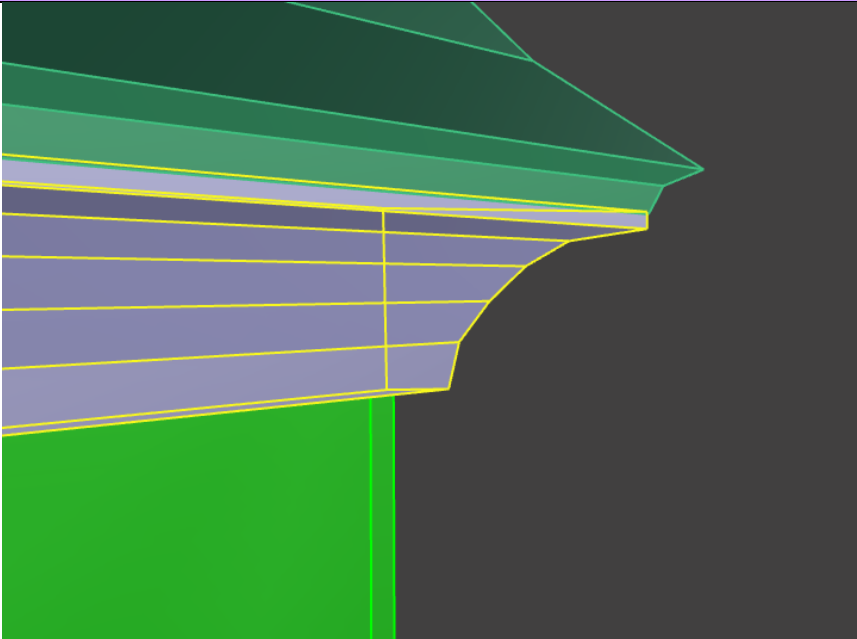
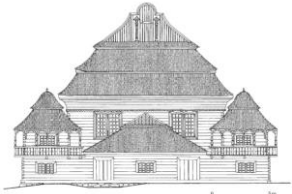

the drawings represent the synagogue in the times of its existence

03- inferences or sources directly related to the object

Vault

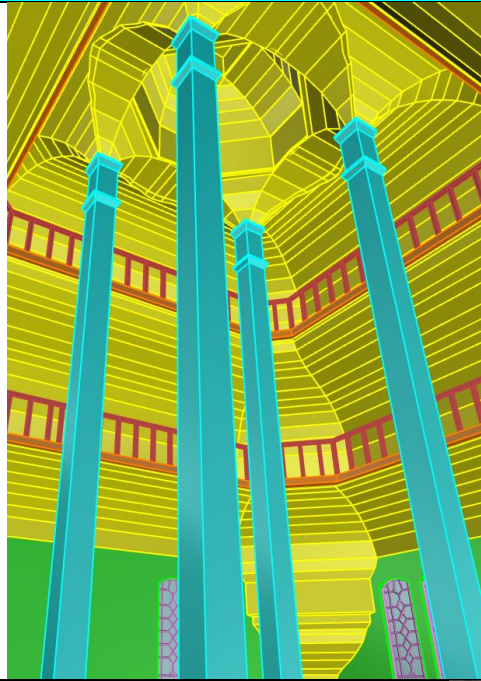
<p>Reconstruct ed object</p>		
<p>Used sources</p>	<p>Wolpa_Piechotkowie_rzut_2.jpg</p>	
	<p>Wolpa_Piechotkowie_przekroj_3.jpg</p>	
	<p>Wolpa_polichromia_rzut_1.jpg</p>	
<p>Argumentati on and evaluation of the uncertainty</p>	<p>the drawings represent the synagogue in the times of its existence; the texture is hypothetical, based on a project of the polychromy reconstruction</p> <p>03- inferences or sources directly related to the object [shape], 01- hypothesis [texture]</p>	

Cornice

<p>Reconstruct ed object</p>		
<p>Used sources</p>	<p>Wolpa_Piechotkowie_elewacja_w.j pg</p>	
	<p>Wolpa_Piechotkowie_zdj-1.jpg</p>	
<p>Argumentati on and evaluation of the uncertainty</p>	<p style="text-align: center;">the picture and drawings represent the synagogue in the times of its existence</p> <p style="text-align: right; color: green;">03- inferences or sources directly related to the object</p>	

Column

Reconstructed object



Used sources

Wolpa_Piechotkowie_zdj-2.jpg



Argumentation and evaluation of the uncertainty

the picture represents the synagogue in the times of its existence

03- inferences or sources directly related to the object

Window type 1

Reconstructed object



Used sources

Wolpa_ZAP_zdj-2.jpg



Wolpa_polichromia_elewacja-1.jpg



Argumentation and evaluation of the uncertainty

the shape and pattern of the window can be seen in the picture representing the synagogue in the times of its existence; the reconstruction of the polichromy is a hypothesis, but it is nearly identical as the window frame in the picture

03- inferences or sources directly related to the object

Window type 2

Reconstructed object

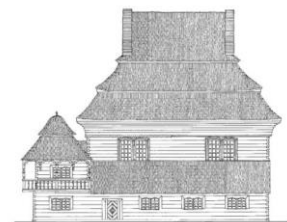


Used sources

Wolpa_Piechotkowie_zdj_3.jpg



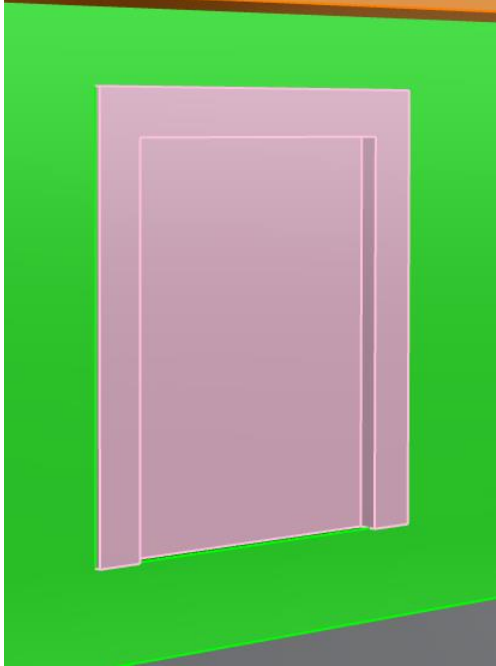
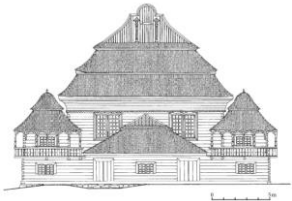

Wolpa_Piechotkowie_elewacja_S.jpg




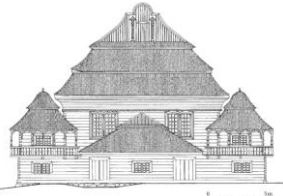

Argumentation and evaluation of the uncertainty

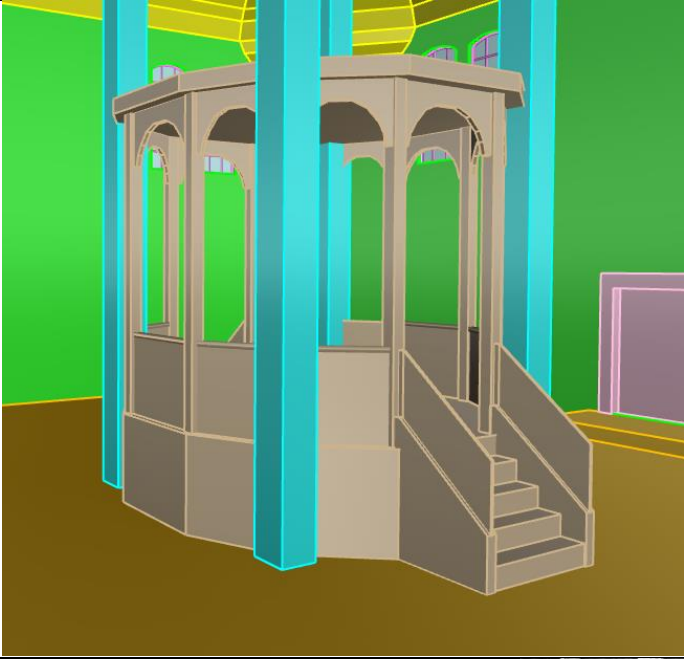

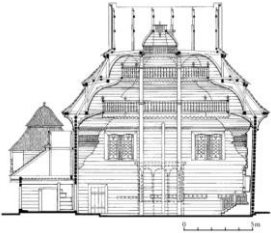
the picture and drawings represent the synagogue in the times of its existence; this part of the model is simplified for the purpose of displaying it in augmented reality

03- inferences or sources directly related to the object

Doorway		
Reconstructed object		
Used sources	Wolpa_Piechotkowie_elewacja_W.jpg	
	Wolpa_ZAP_zdj-3.jpg	
Argumentation and evaluation of the uncertainty	<p>the picture and drawings represent the synagogue in the times of its existence; this part of the model is simplified for the purpose of displaying it in augmented reality</p>	<p>03- inferences of sources directly related to the object</p>

Balustrade

<p>Reconstruct ed object</p>		
<p>Used sources</p>	<p>Wolpa_Piechotkowie_elewacja_w.j pg</p>	
	<p>Wolpa_ZAP_zdj-1.jpg</p>	
<p>Argumentati on and evaluation of the uncertainty</p>	<p>the picture and drawings represent the synagogue in the times of its existence; this part of the model is simplified for the purpose of displaying it in augmented reality</p>	<p>03- inferences or sources directly related to the object</p>

Bema		
Reconstructed object		
Used sources	Wolpa_Piechotkowie_zdj_4.jpg 	
	Wolpa_Piechotkowie_przekroj_2.jpg 	
Argumentation and evaluation of the uncertainty	<p>the picture and drawings represent the synagogue in the times of its existence; the dashed line in the drawing might show uncertainty, so the section was only used to determine the height of the bema</p>	03- inferences or sources directly related to the object

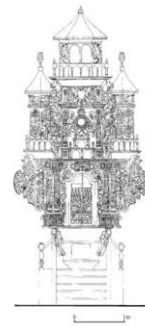
Aron hakodesh

Reconstructed object



Used sources

Wolpa_Piechotkowie_detal_1.jpg



Wolpa_Piechotkowie_zdj_5.jpg



Argumentation and evaluation of the uncertainty

the picture and drawings represent the synagogue in the times of its existence

03- inferences or sources directly related to the object