

Porto City Hall



Description

The former Porto City Hall (1819-1916) was built during the first quarter of the 18th century as two noble houses, the Noble House of Monteiro Moreira [1819], on the right, and later the Noble House of Morais Alão [1864]. Upon the Municipality's acquisition of the first building, renovation work was needed because of its poor conservation status. At that time, the façade was altered with the addition of a pediment where the weapons and the city's coat of arms were placed.

Praça D. Pedro (nowadays Praça da Liberdade), where the buildings were located, became the civic center of the city.

This digital reconstruction portrays the building, and the square, as they were in 1892, when the first cartographic survey of Porto was concluded by Telles Ferreira.

In 1916, to give way to a major renovation of the civic center with the opening of a new avenue, Avenida dos Aliados, the city hall was demolished, along with an extensive number of buildings to the North of the square. With time, the buildings of the East and West side of the square were also demolished or transformed, changing the image of D. Pedro Square in 1892.

Scientific Advisor

Clara Vale

Modelling

Camila Esturilho, Afonso Silva

Cooperation Partnership

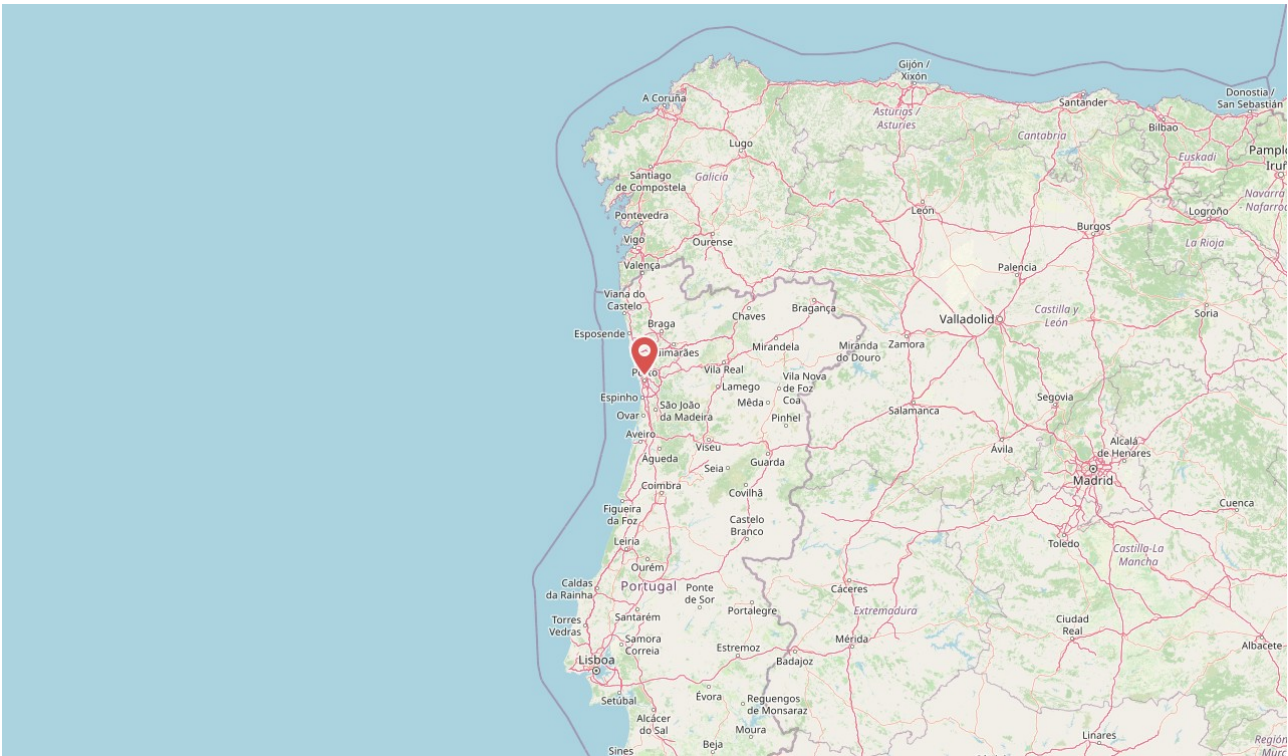
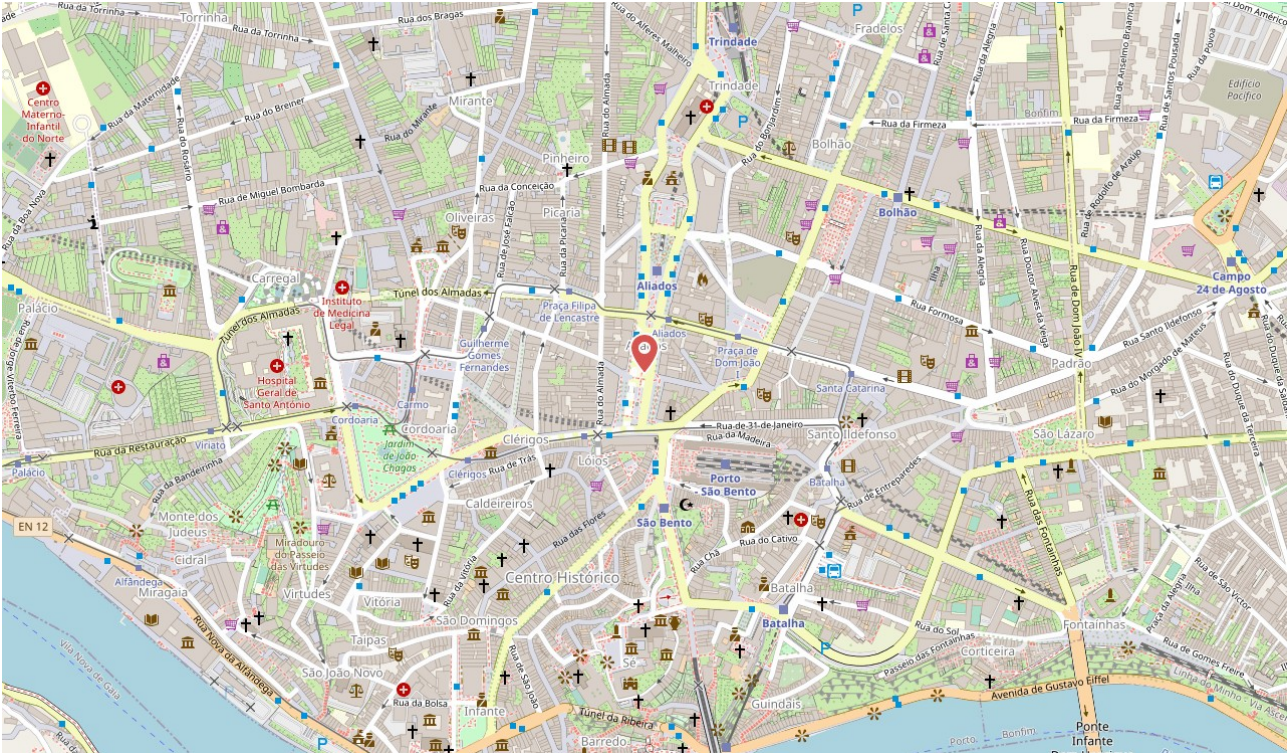
FAUP

Used Software

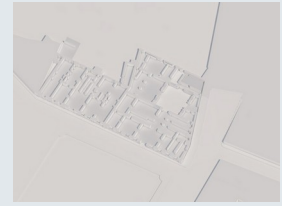
ArchiCAD 26 EDU, Autodesk AutoCAD

Geo-coordinates

Latitude 41.146883 Longitude -8.611241



Ground Floor - Drawing



Variant:

Working state

Reconstruction

Sources

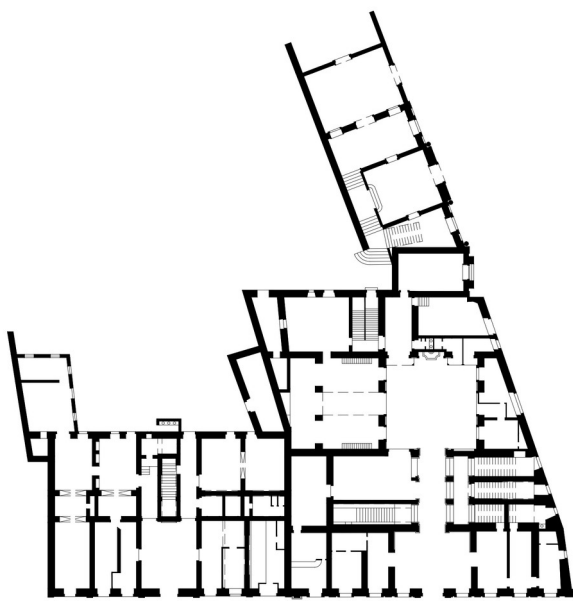


Fig. 33 Ground floor plan reconstruction

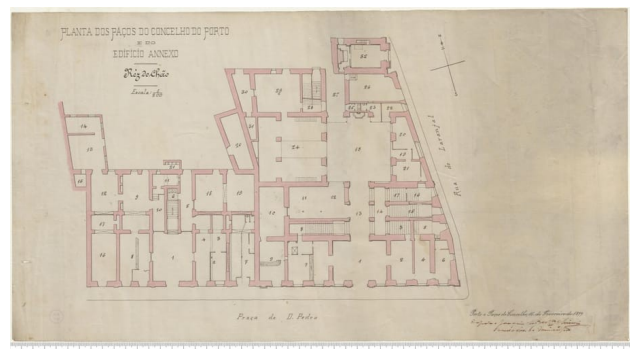


Fig. 8 Survey, from 1899, for the reorganization of function in the City Hall



Fig. 57 Plan for the ground floor of the building in Rua dos Reis Magos

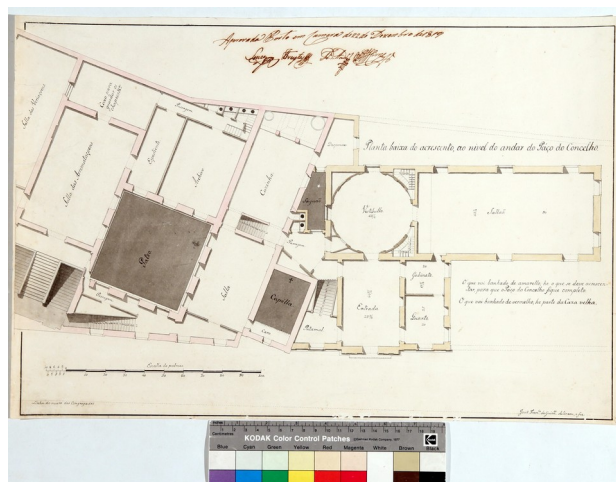


Fig. 60 Plan for the first floor of the building in Rua dos Reis Magos



Fig. 25 Porto in 1892, Telles Ferreira survey of D. Pedro Square on a scale of 1/500



Fig. 26 Porto in 1892, Telles Ferreira survey of D. Pedro Square on a scale of 1/500



Fig. 27 Porto in 1892, Telles Ferreira survey of D. Pedro Square on a scale of 1/500

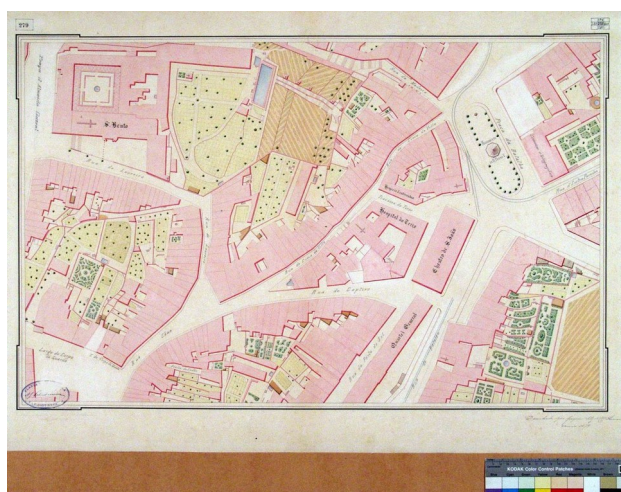


Fig. 28 Porto in 1892, Telles Ferreira survey of D. Pedro Square on a scale of 1/500



Fig. 29 Mipweb Porto in 1892, Telles Ferreira survey of D. Pedro Square in interactive historical maps of Porto

Ground Floor - 3D



Variant:

Working state

Reconstruction

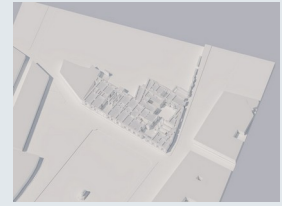
Sources



No sources assigned

Fig. 52 Ground Floor Reconstruction

Half Floor - Drawing



Variant:

Working state

Reconstruction

Sources

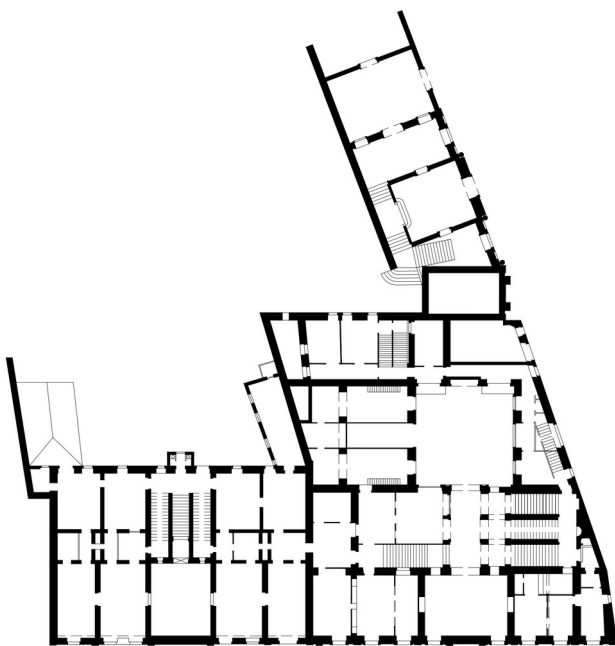


Fig. 36 Half floor plan reconstruction

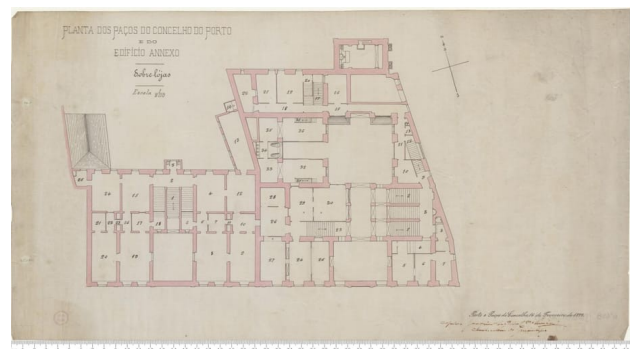


Fig. 10 Survey, from 1899, for the reorganization of function in the City Hall

Half Floor - 3D

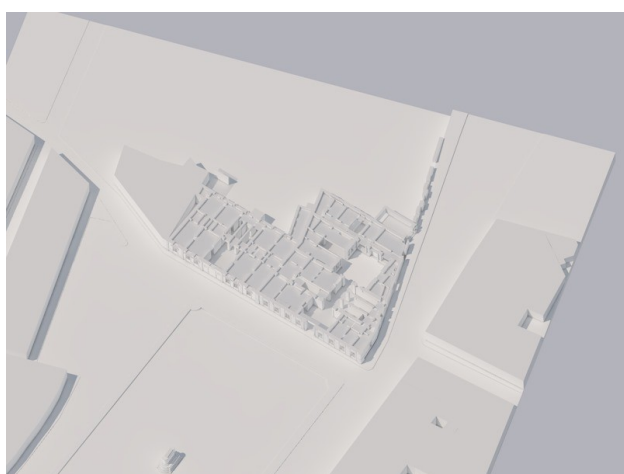


Variant:

Working state

Reconstruction

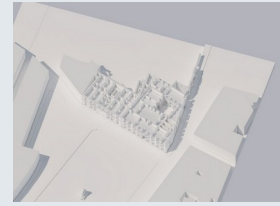
Sources



No sources assigned

Fig. 46 Half Floor reconstruction

First Floor - Drawing



Variant:

Working state

Reconstruction

Sources

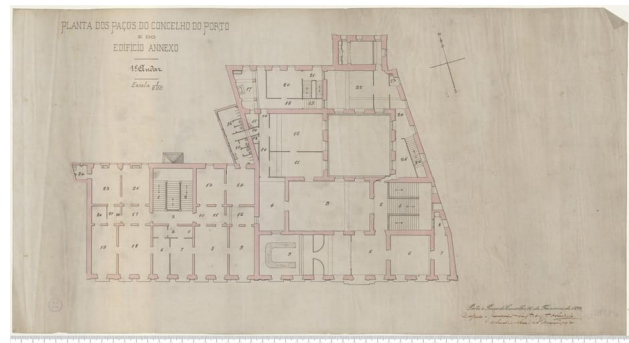
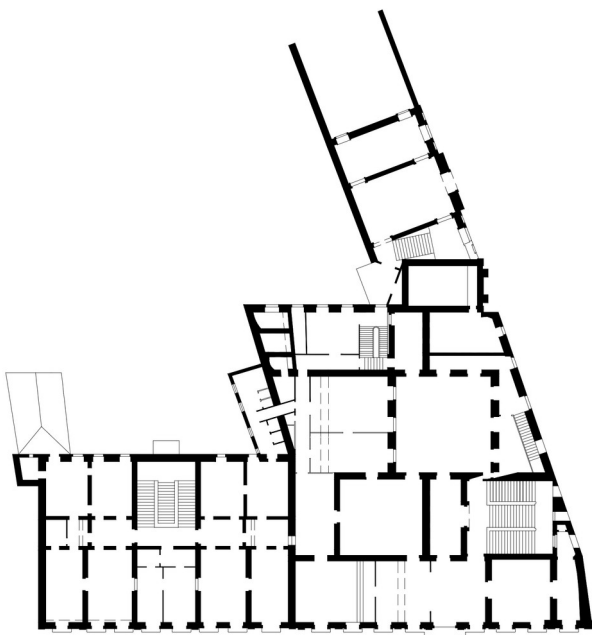


Fig. 9 Survey, from 1899, for the reorganization of function in the City Hall

Fig. 35 First floor plan reconstruction

First Floor - 3D



Variant:

Working state

Reconstruction

Sources



No sources assigned

Fig. 44 First Floor reconstruction

South Elevation - Drawing



Variant:

Working state

Reconstruction



Fig. 61 Reconstruction of the South Elevation



Fig. 31 section through the main building and patio

Sources



Fig. 12 Southern Elevation detail



ara. (Fonte: goo.gl/9tHuxj) [24] - Casa da Câmara, anterior a 1916. (ALVÃO, 2002)

Fig. 16 South Elevation and part of the Eastern Elevation



Fig. 21 Photos from the demolition process in 1916



Fig. 22 D. Pedro Square in 1982

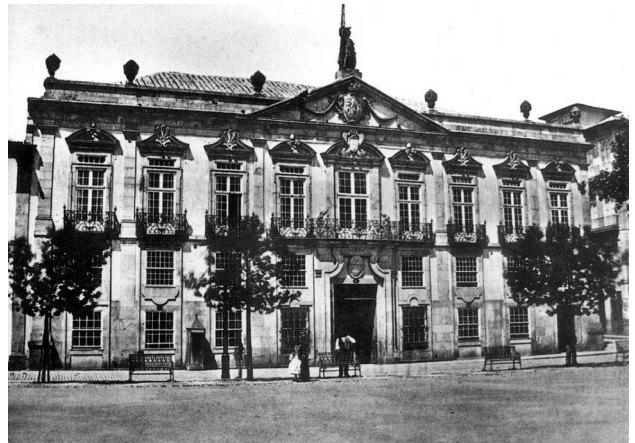


Fig. 23 Southern Elevation



Fig. 24 Southern Elevation



Fig. 37 Porto Praça de D.jpg

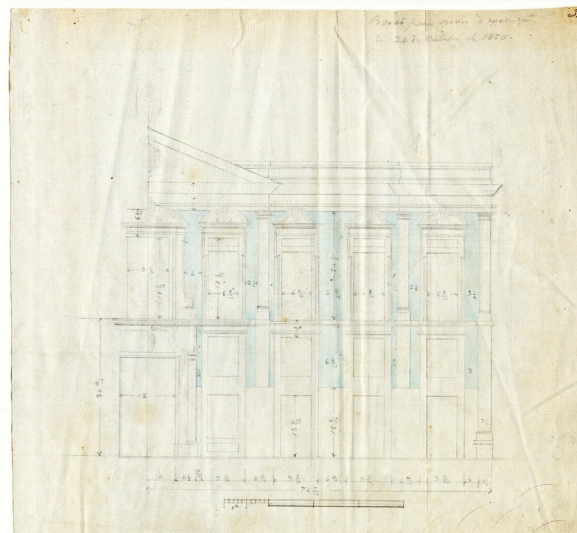


Fig. 11 1850 partial survey of the façade (in palms) and measurements translated in meters



Fig. 17 Photos from the demolition process in 1916



Fig. 39 Interior image of the city hall

South Elevation - 3D



Variant:

Working state

Reconstruction

Sources

No sources assigned



Fig. 41 Southern Facade Render



Fig. 43 Southern and Eastern Facade Render



Fig. 47 3D axonometry

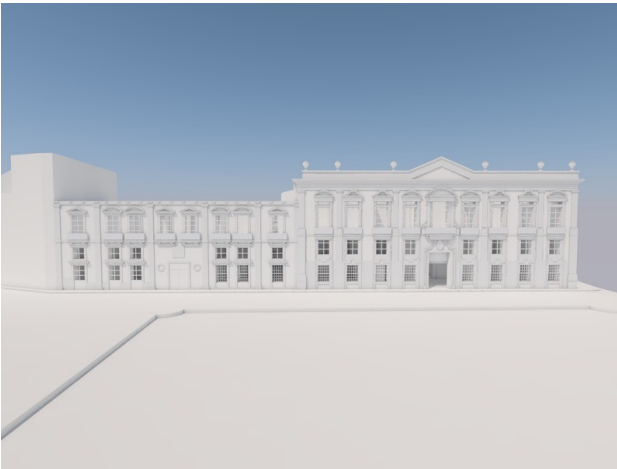


Fig. 49 Southern Elevation



Fig. 68 South Elevation Render

South Elevation - Details



Variant:

Working state

Reconstruction

Sources

No sources assigned



Fig. 67 South Elevation Render



Fig. 69 South Elevation Render

East Elevation - Drawing



Variant:

Working state

Reconstruction



Fig. 62 Reconstruction of the East Elevation

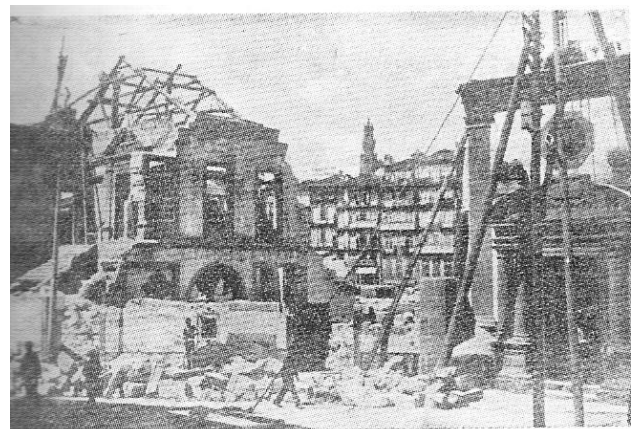


Fig. 30 transversal section through the building extension



Fig. 32 transversal section through the main building and patio

Sources



À esquerda: restos da antiga *Domus Municipalis* da Praça de D. Pedro (actual Praça da Liberdade). À direita: a *Capela dos Três Reis Magos*.
No início da abertura da *Avenida dos Aliados*.

Fig. 7 Photos from the demolition process in 1916



Fig. 13 3 Reis Magos Chapel

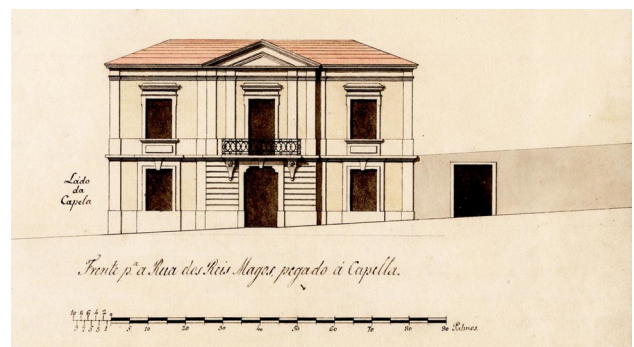


Fig. 14 Project for the construction of a building past the 3 Reis Magos chapel



ara. (Fonte: goo.gl/9tHuxj [24] - Casa da Câmara, anterior a 1916. (ALVÃO, 2002)

Fig. 16 South Elevation and part of the Eastern Elevation



Fig. 38 3 Reis Magos Chapel

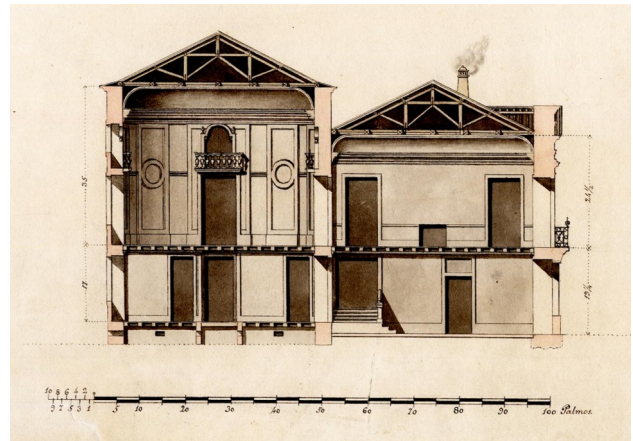


Fig. 15 Project for the construction of a building past the 3 Reis Magos chapel

East Elevation - 3D

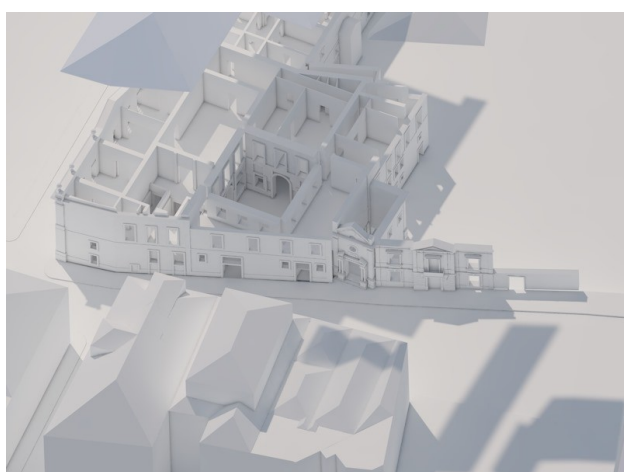


Variant:

Working state

Reconstruction

Sources



No sources assigned

Fig. 48 Eastern Elevation



Fig. 50 Eastern Elevation



Fig. 51 3 Reis Magos Chapel



Fig. 30 transversal section through the building extension



Fig. 31 section through the main building and patio



Fig. 32 transversal section through the main building and patio

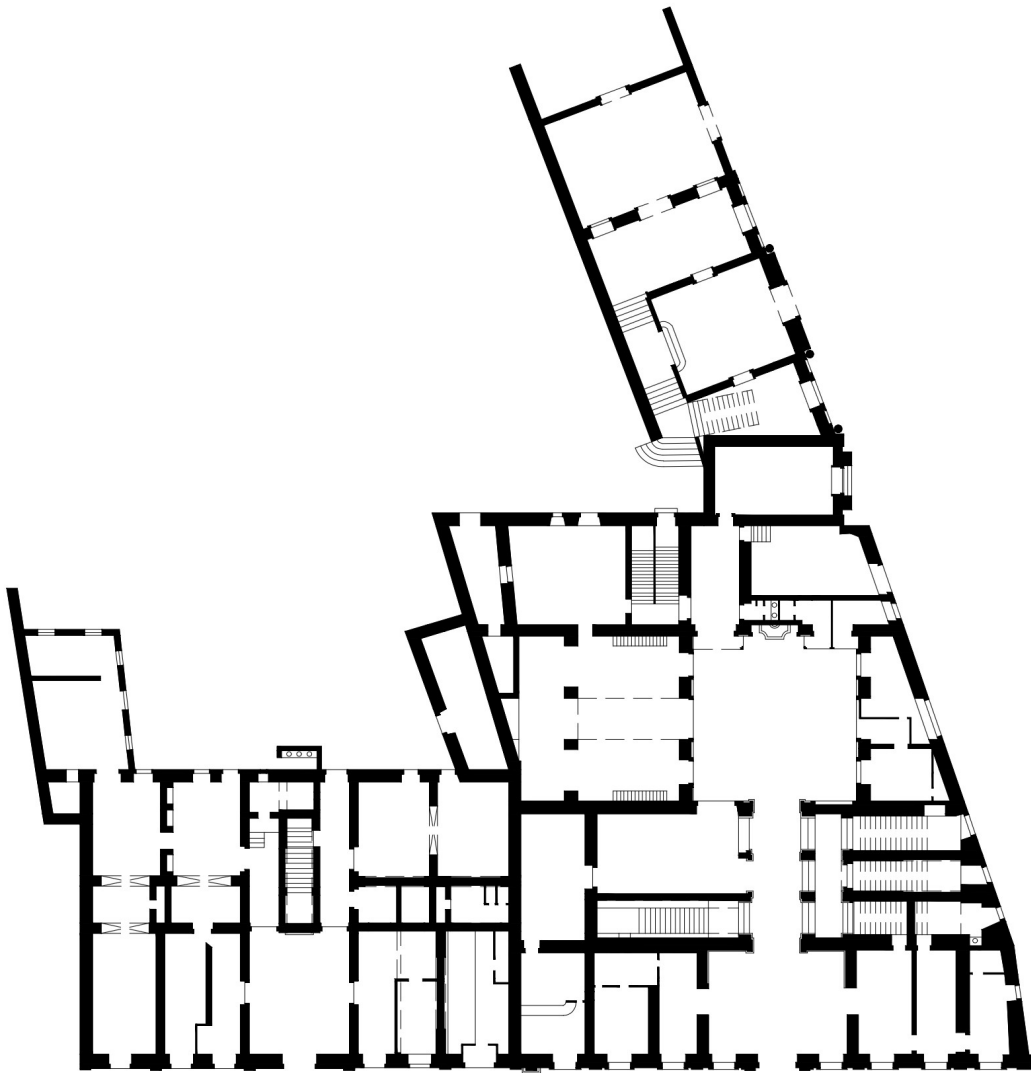


Fig. 33 Ground floor plan reconstruction



Fig. 34 Reconstruction of the Southern and Eastern elevations

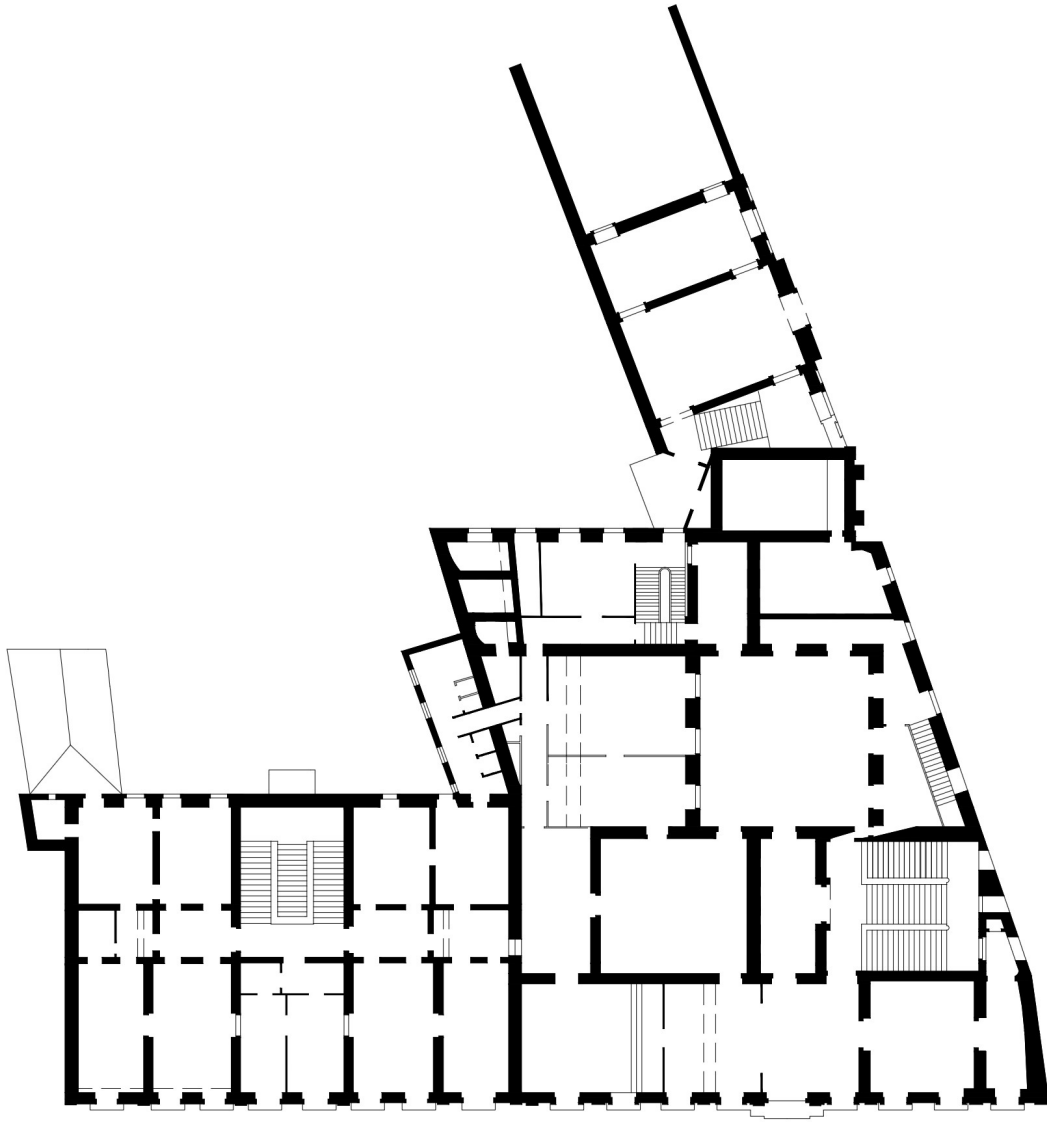


Fig. 35 First floor plan reconstruction

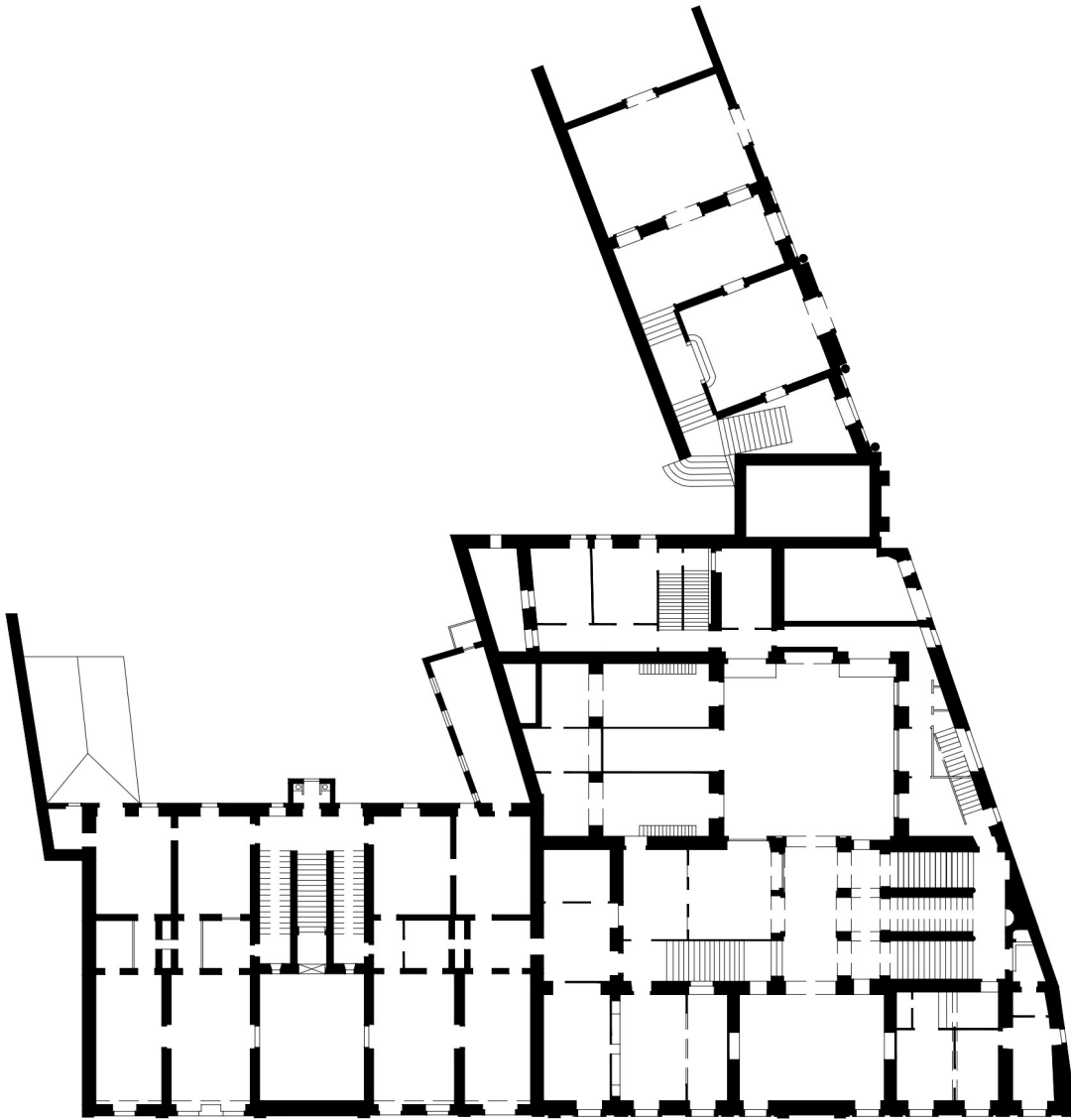


Fig. 36 Half floor plan reconstruction



Fig. 41 Southern Facade Render



Fig. 43 Southern and Eastern Facade Render

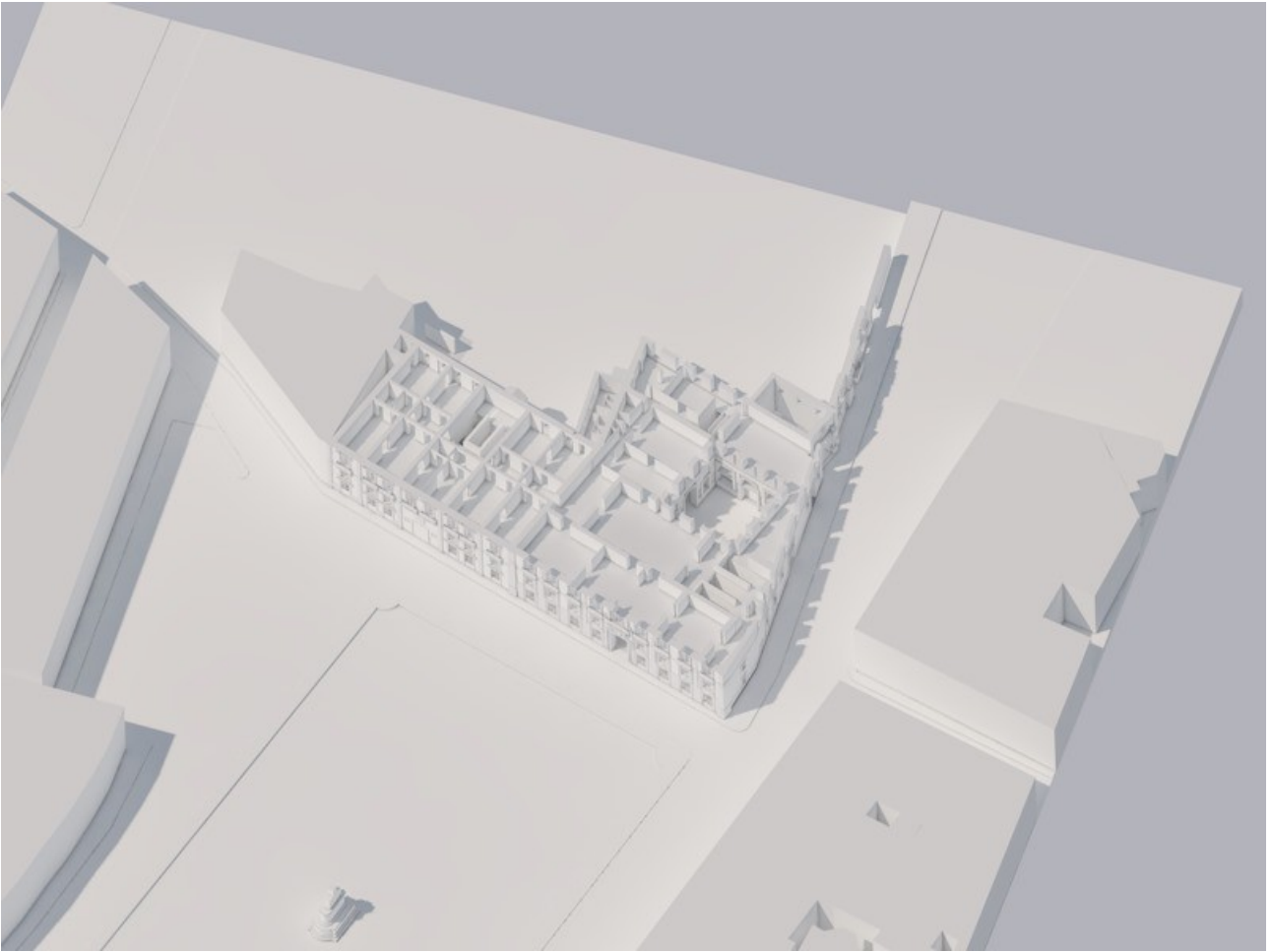


Fig. 44 First Floor reconstruction

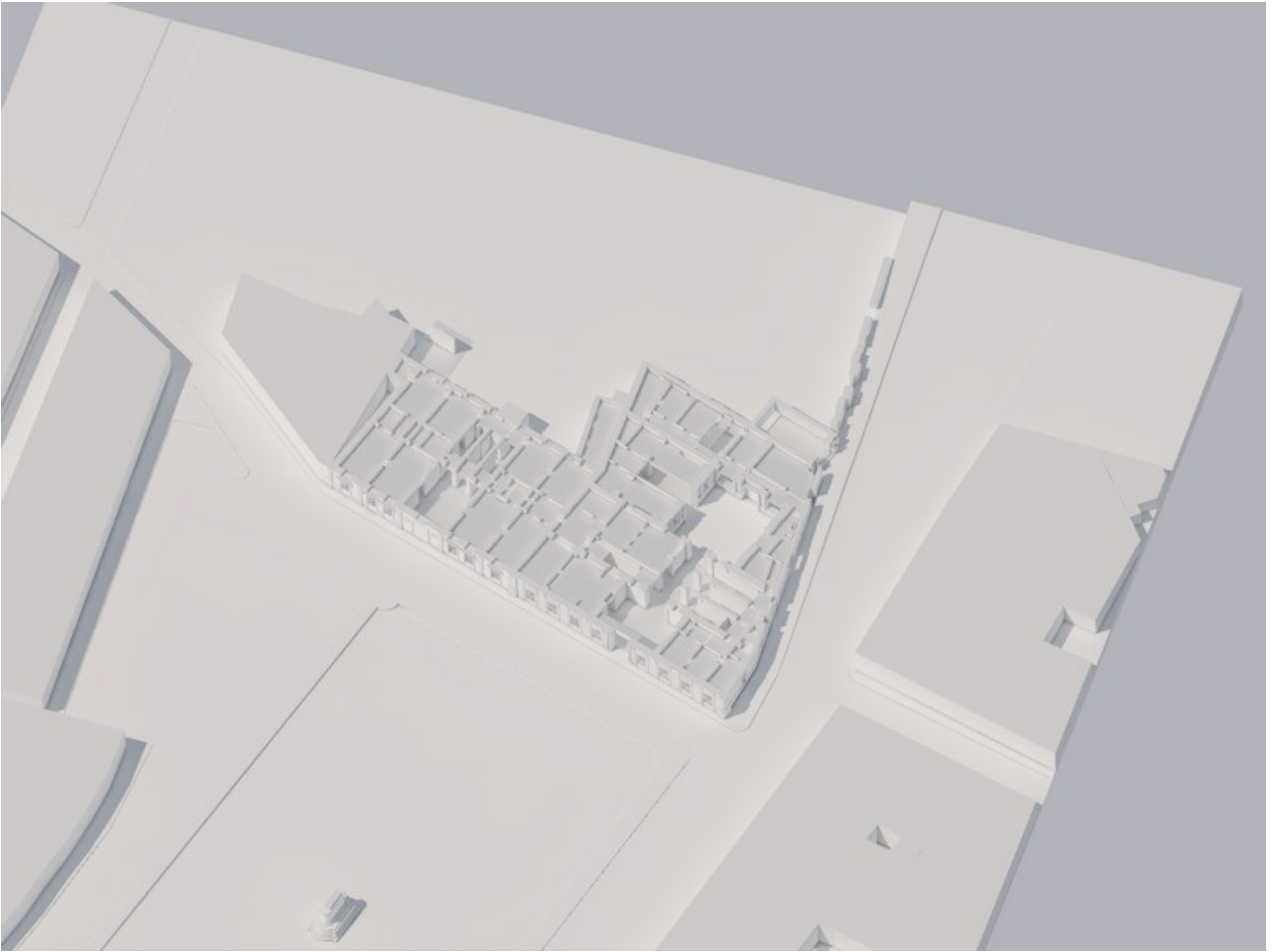


Fig. 46 Half Floor reconstruction

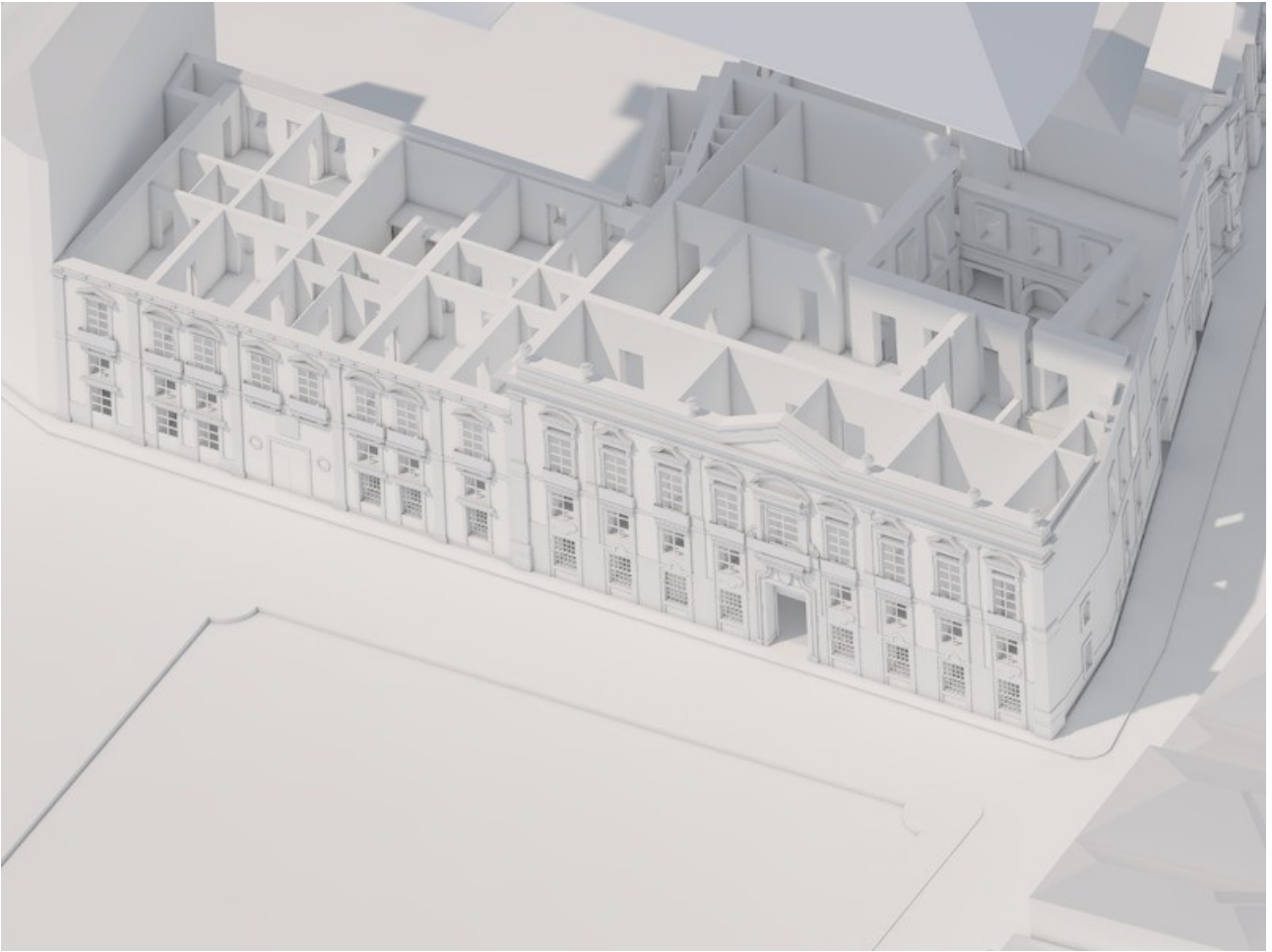


Fig. 47 3D axonometry

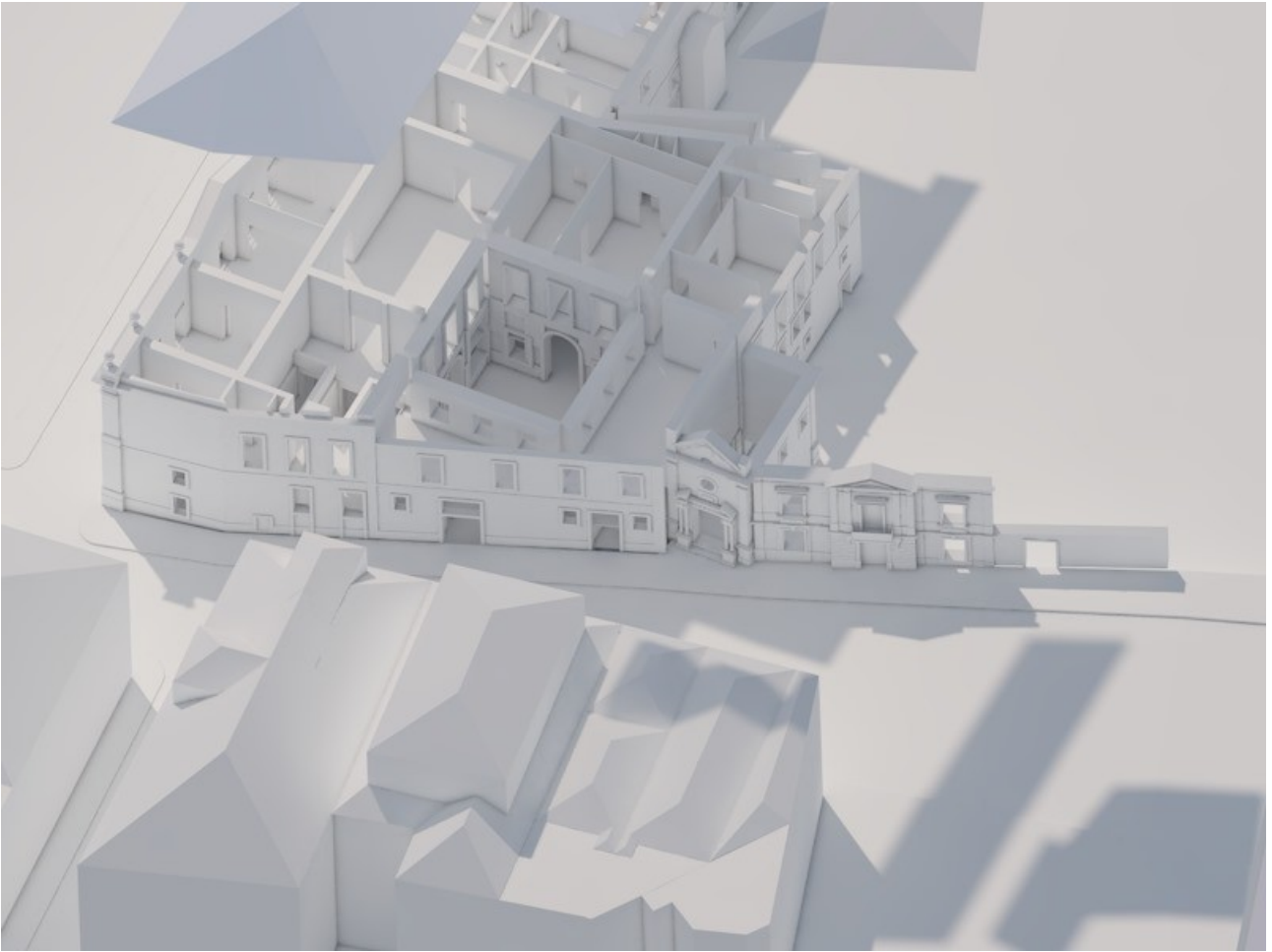


Fig. 48 Eastern Elevation

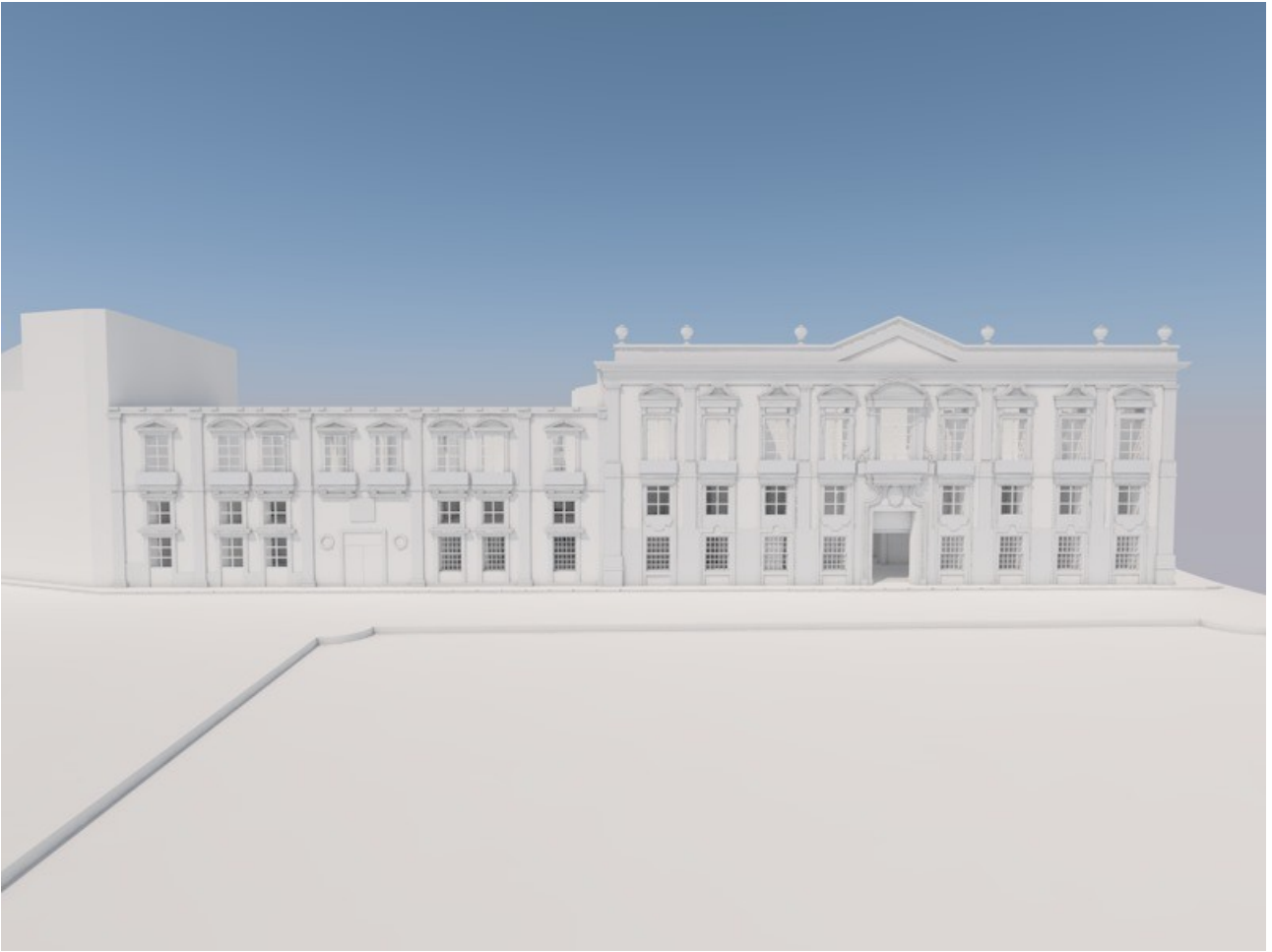


Fig. 49 Southern Elevation



Fig. 50 Eastern Elevation



Fig. 51 3 Reis Magos Chapel

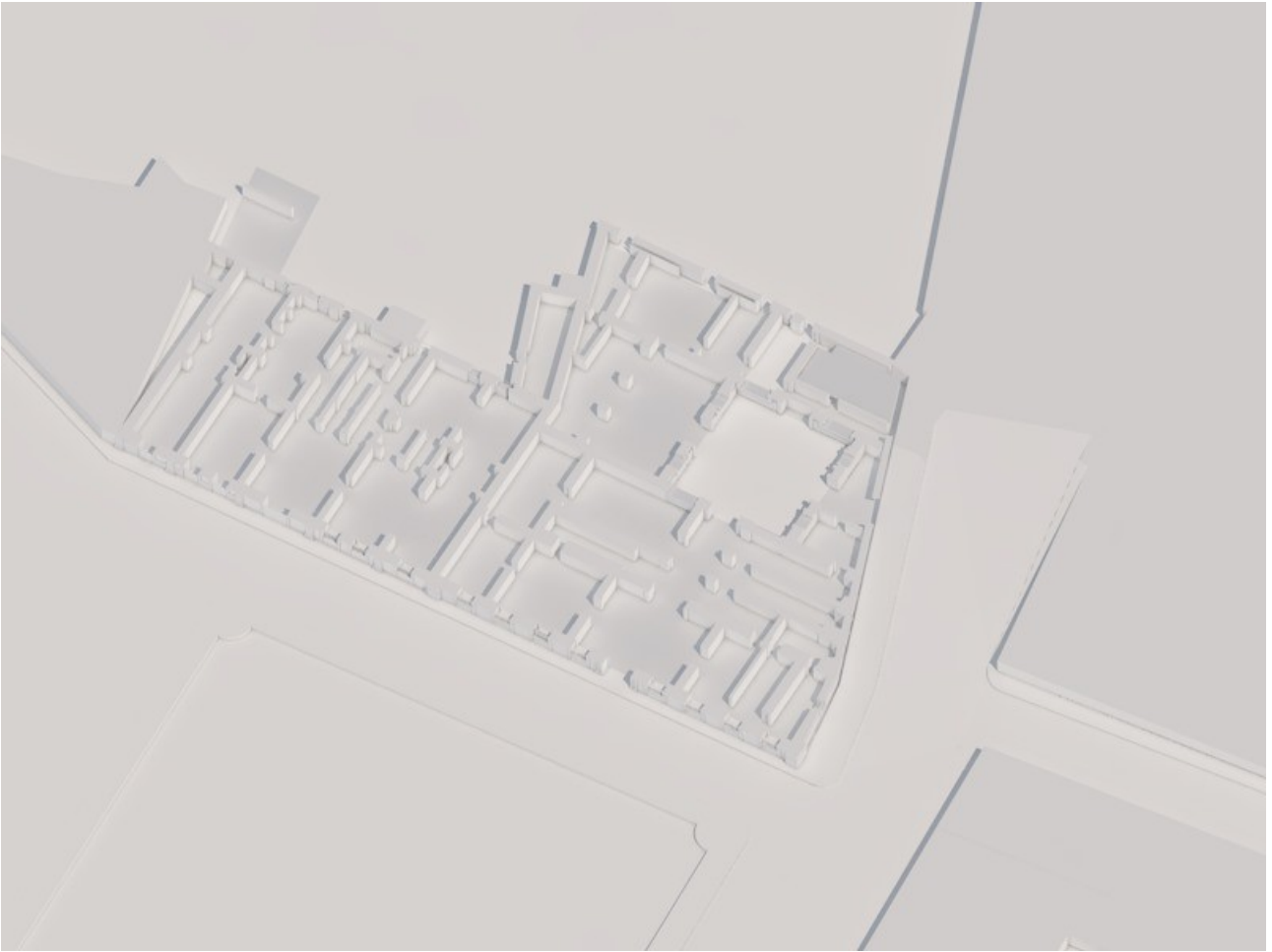


Fig. 52 Ground Floor Reconstruction

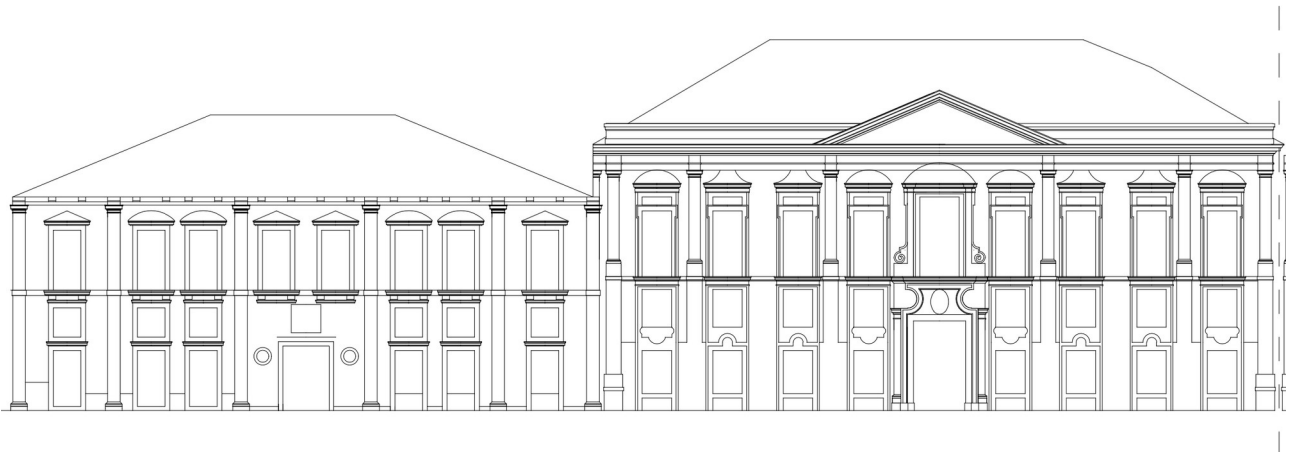


Fig. 61 Reconstruction of the South Elevation



Fig. 62 Reconstruction of the East Elevation



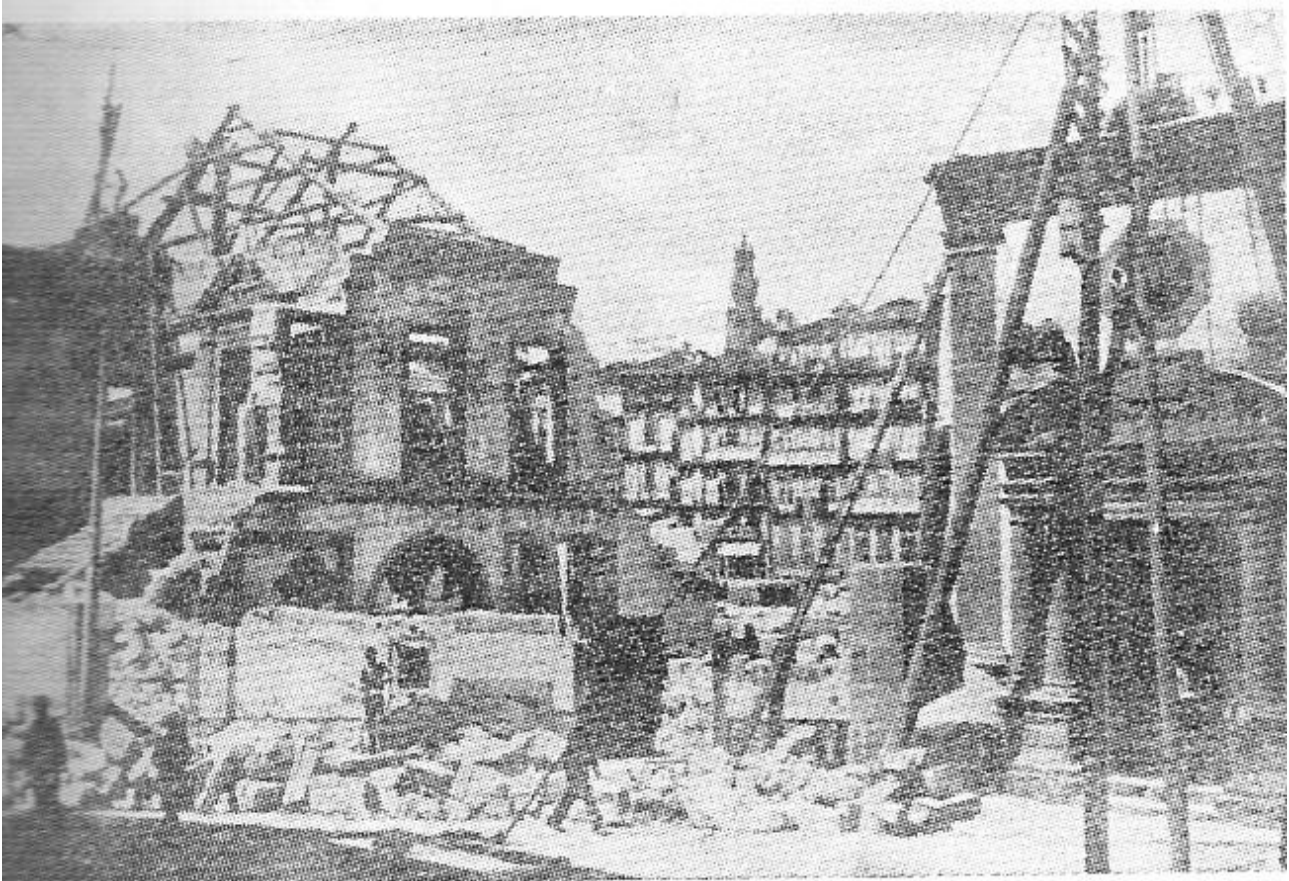
Fig. 67 South Elevation Render



Fig. 68 South Elevation Render



Fig. 69 South Elevation Render



A esquerda: restos da antiga *Domus Municipalis* da Praça de D. Pedro (actual Praça da Liberdade). À direita: a *Capela dos Três Reis Magos*.
No início da abertura da Avenida dos Aliados.

Fig. 7 Photos from the demolition process in 1916

Type	Photograph	Used as source in:
Description		Elevations
Author		East Elevation – Drawing
Archive		
Signature		
Copyright		

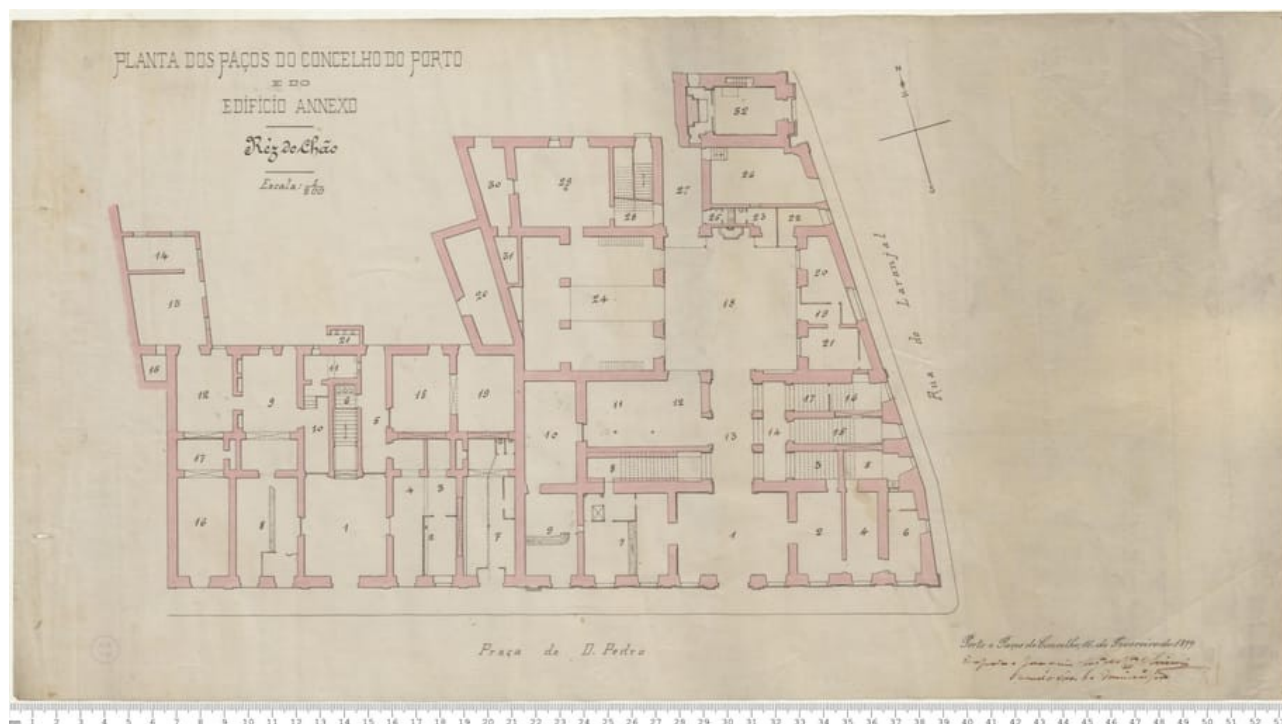


Fig. 8 Survey, from 1899, for the reorganization of function in the City Hall

Type Survey drawing

Used as source in:

Description Plans of the ground floor, superstores and first floor of the City Hall, in Praça de Dom Pedro and Rua do Laranjal; in the notebook, legend of the plans with a list of the services operating in the various compartments, and their future destination.

Plans

Ground Floor – Drawing

Author: Joaquim Augusto da Costa Oliveira.

Author Oliveira

Archive Historical Archive of Porto

Signature

Copyright

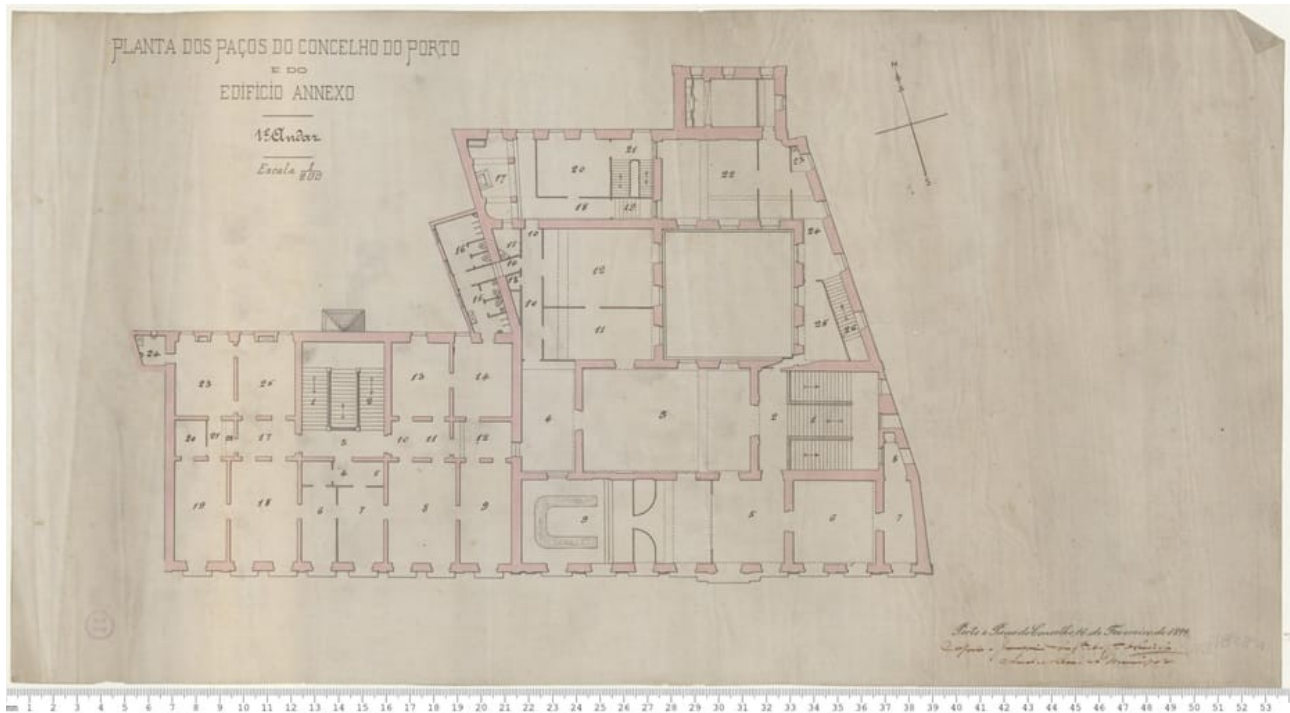


Fig. 9 Survey, from 1899, for the reorganization of function in the City Hall

Type Survey drawing

Used as source in:

Description Plans of the ground floor, superstores and first floor of the City Hall, in Praça de Dom Pedro and Rua do Laranjal; in the notebook, legend of the plans with a list of the services operating in the various compartments, and their future destination.

Plans

First Floor – Drawing

Author: Joaquim Augusto da Costa Oliveira.

Author Oliveira

Archive Historical Archive of Porto

Signature

Copyright



Fig. 10 Survey, from 1899, for the reorganization of function in the City Hall

Type Survey drawing

Used as source in:

Description Plans of the ground floor, superstores and first floor of the City Hall, in Praça de Dom Pedro and Rua do Laranjal; in the notebook, legend of the plans with a list of the services operating in the various compartments, and their future destination.

Plans

Half Floor – Drawing

Author: Joaquim Augusto da Costa Oliveira.

Author Oliveira

Archive Historical Archive of Porto

Signature

Copyright

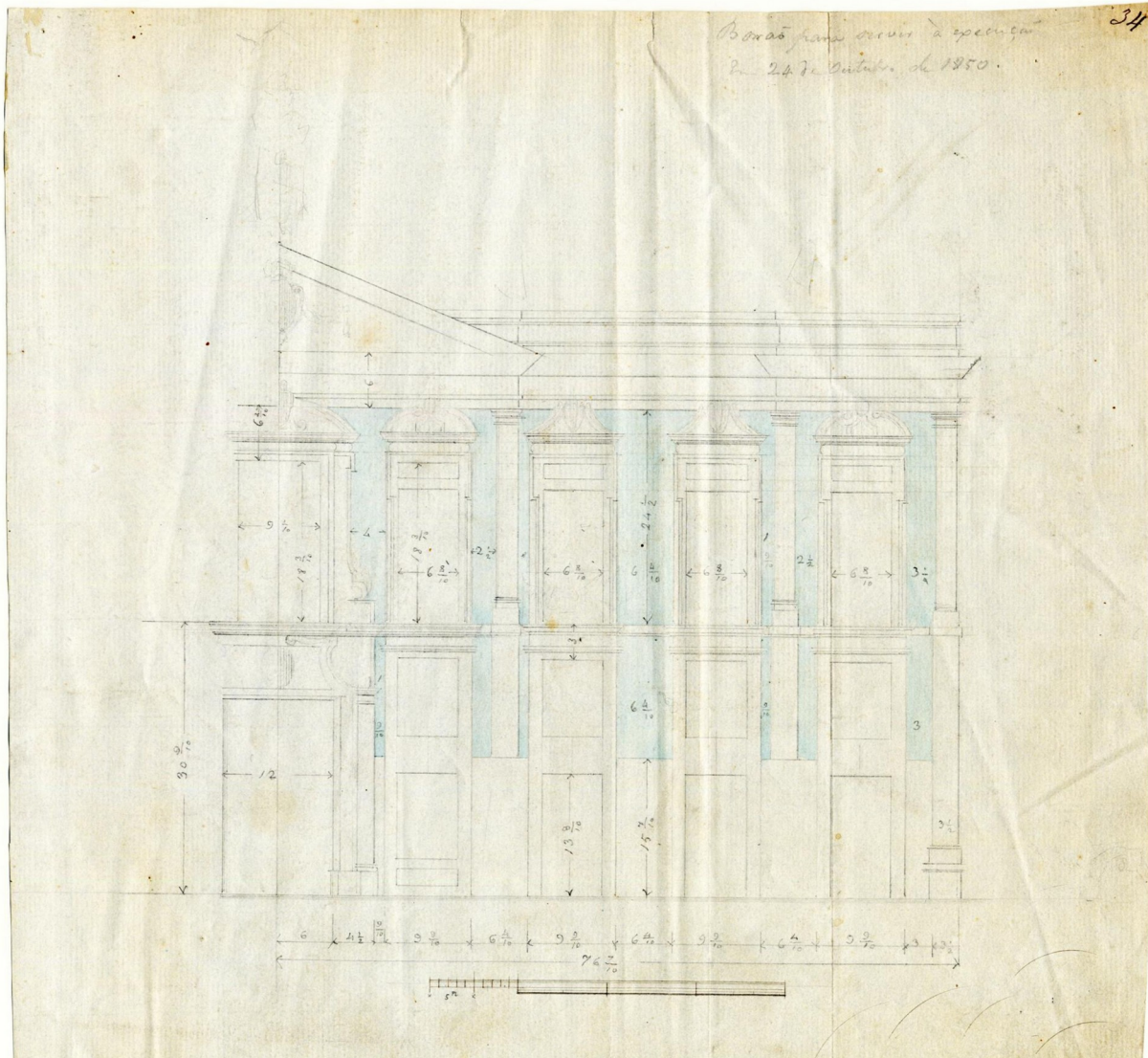


Fig. 11 1850 partial survey of the façade (in palms) and measurements translated in meters

Type Survey drawing

Used as source in:

Description Elevation of part of the City Hall building in Praça de D. Pedro.

Elevations

South Elevation – Drawing

Scale: ca. 1:85.

Author

Archive Historical Archive of Porto

Signature

Copyright



Fig. 12 Southern Elevation detail

Type Photograph

Description

Author

Archive

Signature

Copyright

Used as source in:

[Elevations](#)

South Elevation – Drawing



Fig. 13 3 Reis Magos Chapel

Type Photograph

Description Old postcard of the 3 Reis Magos Chapel. Publisher: Tabacaria Rodrigues; M.S.D.

Author

Archive Historical Archive of Porto

Signature

Copyright

Used as source in:

Elevations

East Elevation – Drawing

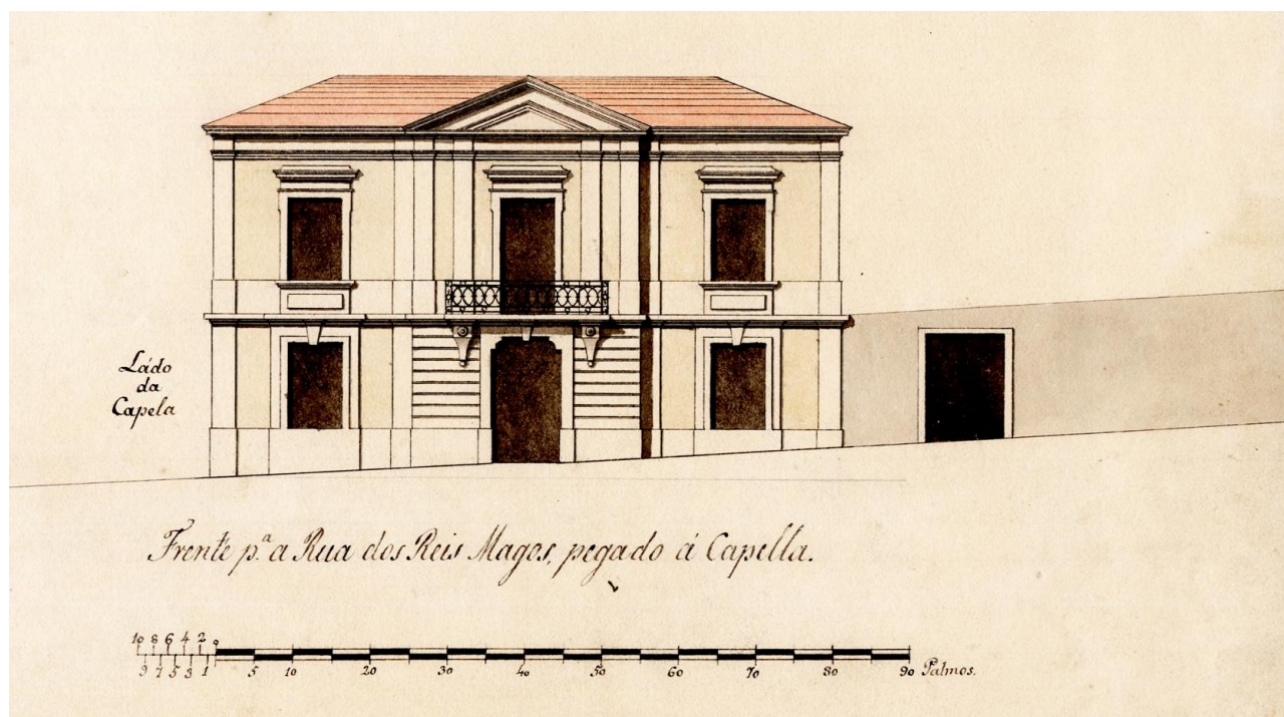


Fig. 14 Project for the construction of a building past the 3 Reis Magos chapel

Type Drawing

Used as source in:

Description Elevation for a building in Rua dos Reis Magos, by João Francisco de Guimarães, approved by the City Council on 1819-12-22.

Elevations

East Elevation – Drawing

Scale: 1:130.

Author João Francisco de Guimarães

Archive Historical Archive of Porto

Signature

Copyright

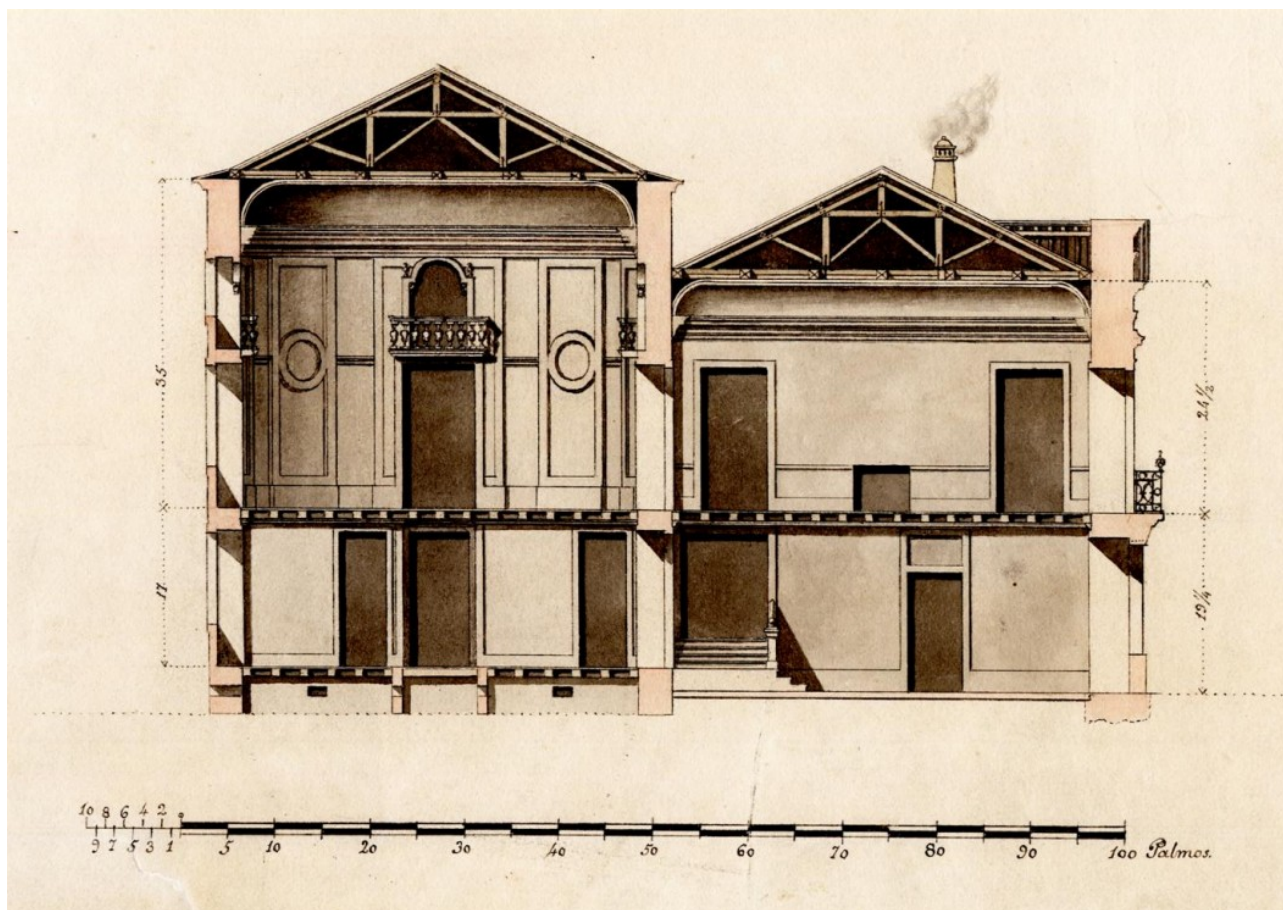


Fig. 15 Project for the construction of a building past the 3 Reis Magos chapel

Type Drawing

Used as source in:

Description Section for a building in Rua dos Reis Magos, by João Francisco de Guimarães, approved by the City Council on 1819-12-22.

Elevations

East Elevation – Drawing

Scale: 1:130.

Author João Francisco de Guimarães

Archive Historical Archive of Porto

Signature

Copyright



ara. (Fonte: goo.gl/9tHuxj) [24] - Casa da Câmara, anterior a 1916. (ALVÃO, 2002)

Fig. 16 South Elevation and part of the Eastern Elevation

Type	Photograph	Used as source in:
Description		<u>Elevations</u>
Author	Domingos Alvão	South Elevation – Drawing
Archive		East Elevation – Drawing
Signature		
Copyright		



Fig. 17 Photos from the demolition process in 1916

Type	Photograph	Used as source in:
Description		Elevations
Author		South Elevation – Drawing
Archive		
Signature		
Copyright		



Fig. 21 Photos from the demolition process in 1916

Type	Photograph	Used as source in:
Description		<u>Elevations</u>
Author		South Elevation - Drawing
Archive		
Signature		
Copyright		



Fig. 22 D. Pedro Square in 1982

Type Photograph

Description

Author

Archive

Signature

Copyright

Used as source in:

Elevations

South Elevation – Drawing

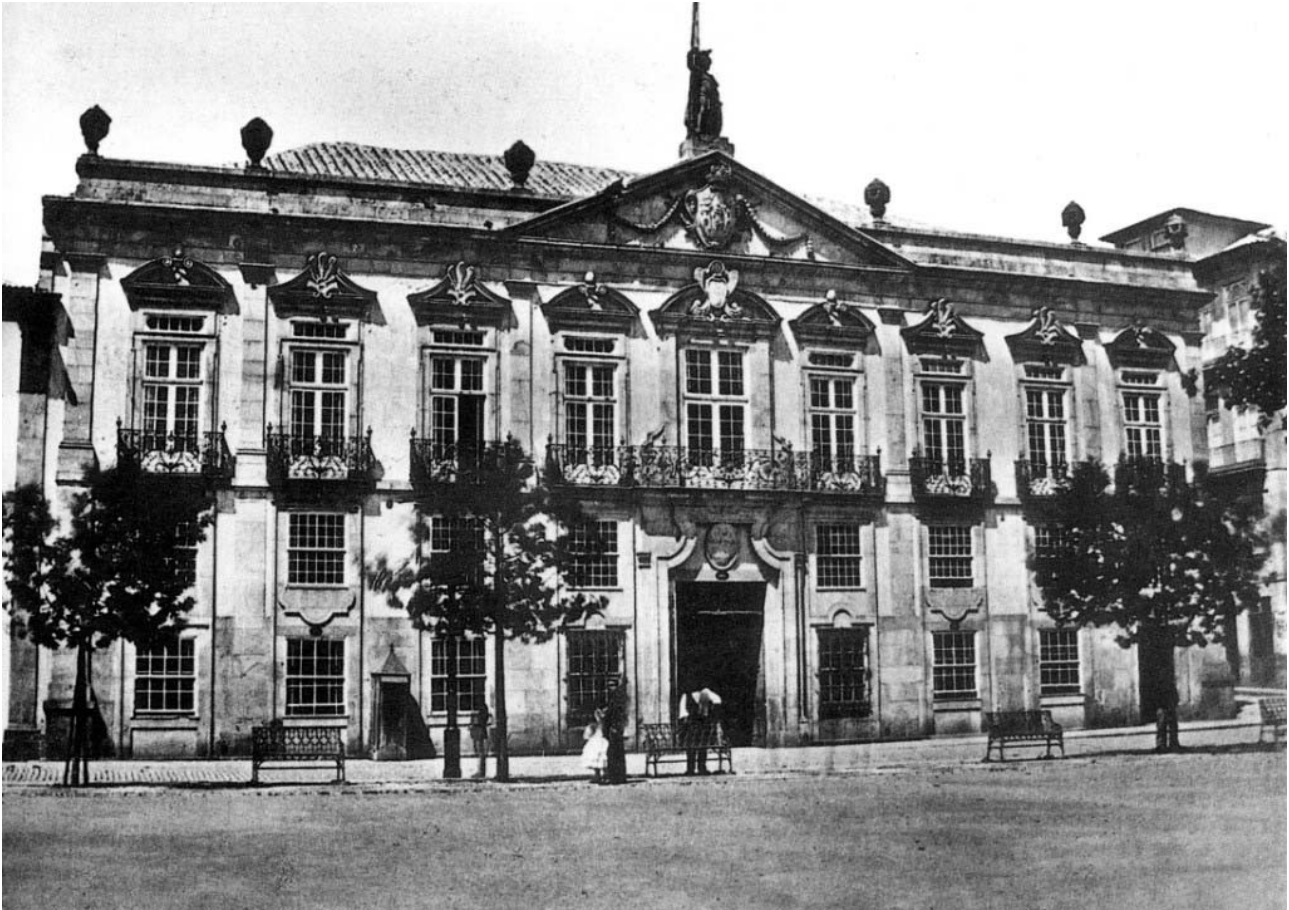


Fig. 23 Southern Elevation

Type Photograph
Description
Author
Archive
Signature
Copyright

Used as source in:
[Elevations](#)
South Elevation - Drawing



Fig. 24 Southern Elevation

Type Photograph

Description

Author

Archive

Signature

Copyright

Used as source in:

Elevations

South Elevation – Drawing

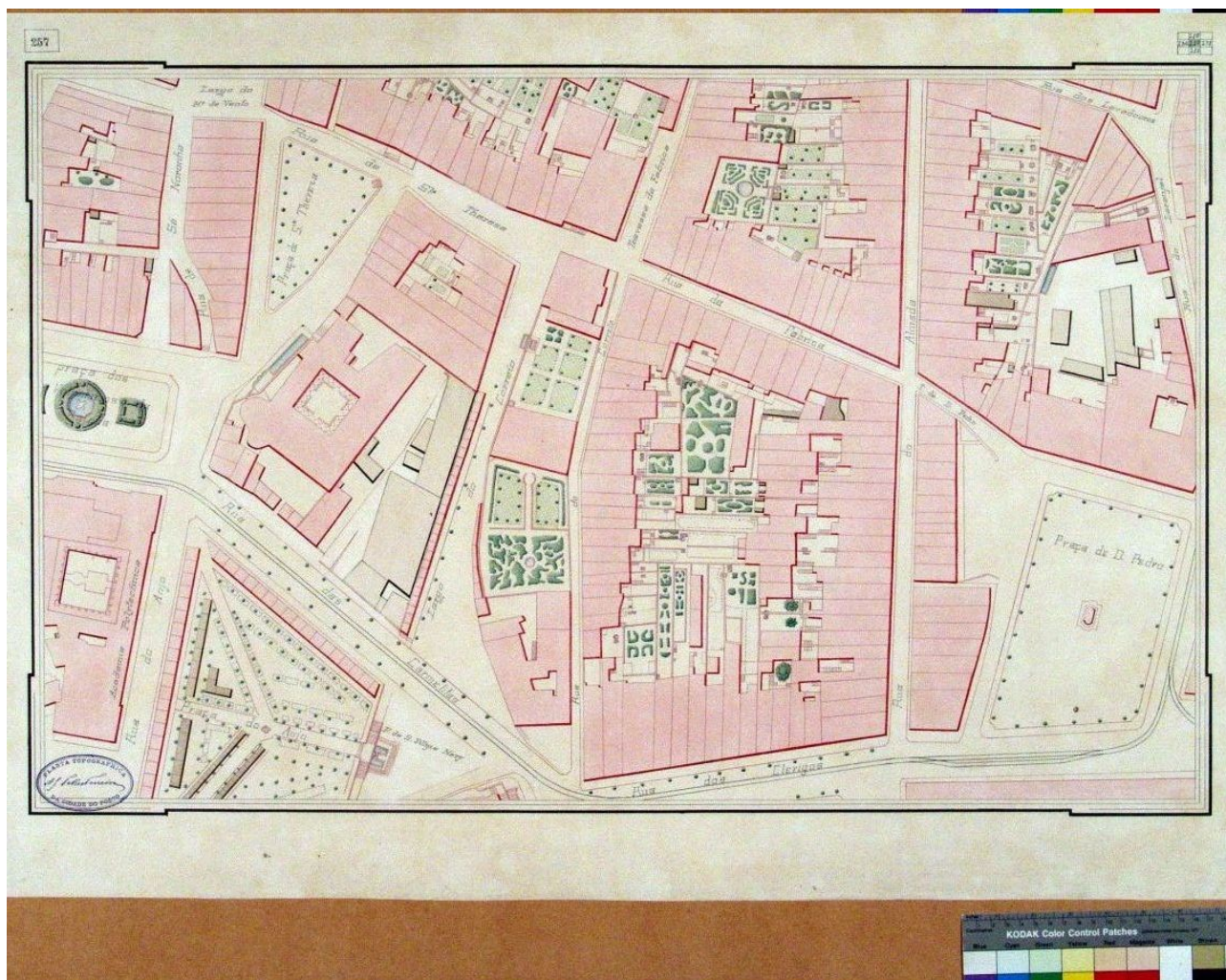


Fig. 25 Porto in 1892, Telles Ferreira survey of D. Pedro Square on a scale of 1/500

Type Survey drawing

Used as source in:

Description Map of the city of Porto, on a scale of 1:500, drawn up under the direction of Augusto Gerardo Teles Ferreira.

Plans

Ground Floor - Drawing

PT-CMP-AM/PUB/CMPRT/PC/
0020-257

Author

Archive Historical Archive of Porto

Signature

Copyright

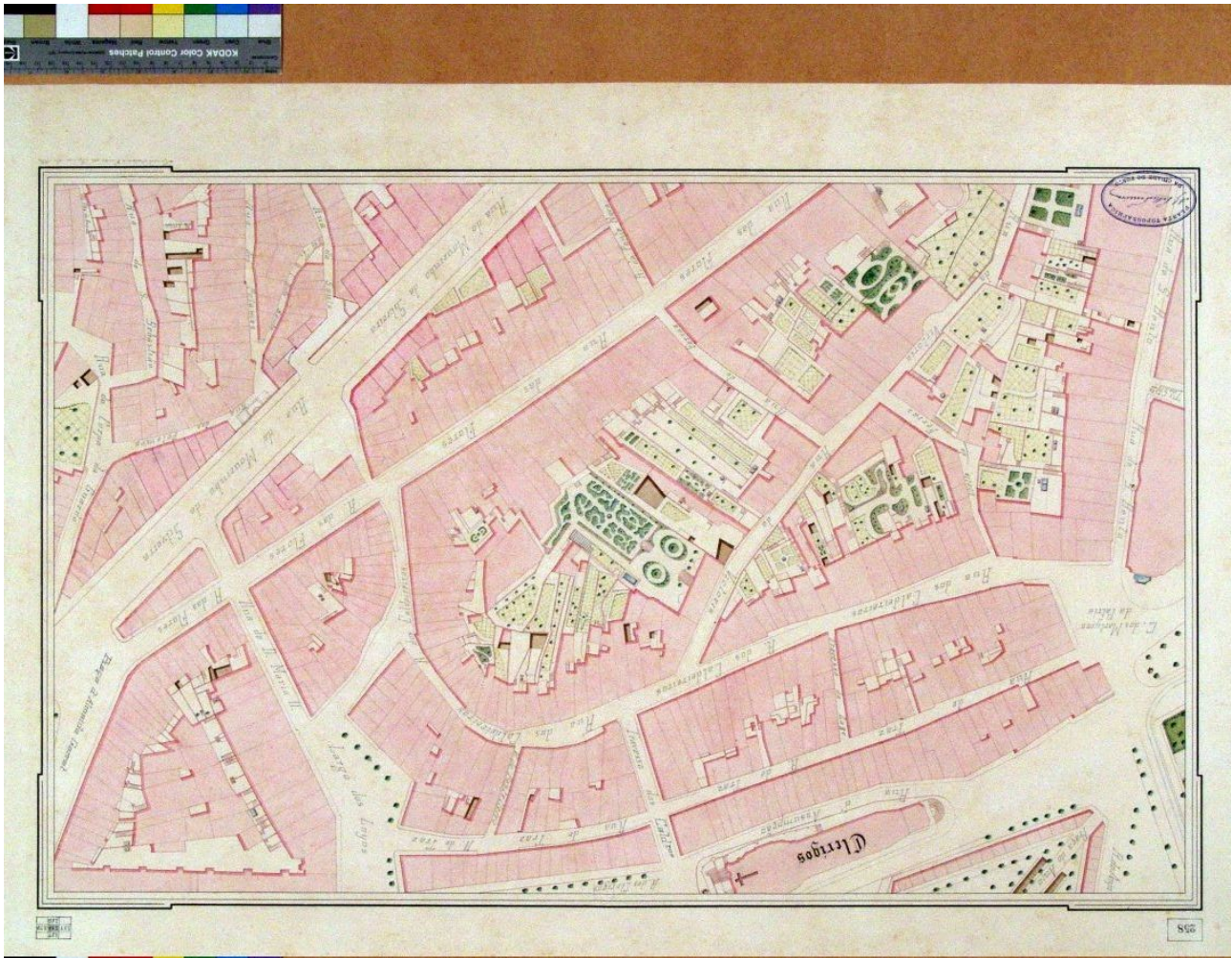


Fig. 26 Porto in 1892, Telles Ferreira survey of D. Pedro Square on a scale of 1/500

Type	Survey drawing	Used as source in:
Description		<u>Plans</u>
Author		Ground Floor - Drawing
Archive	Historical Archive of Porto	
Signature		
Copyright		

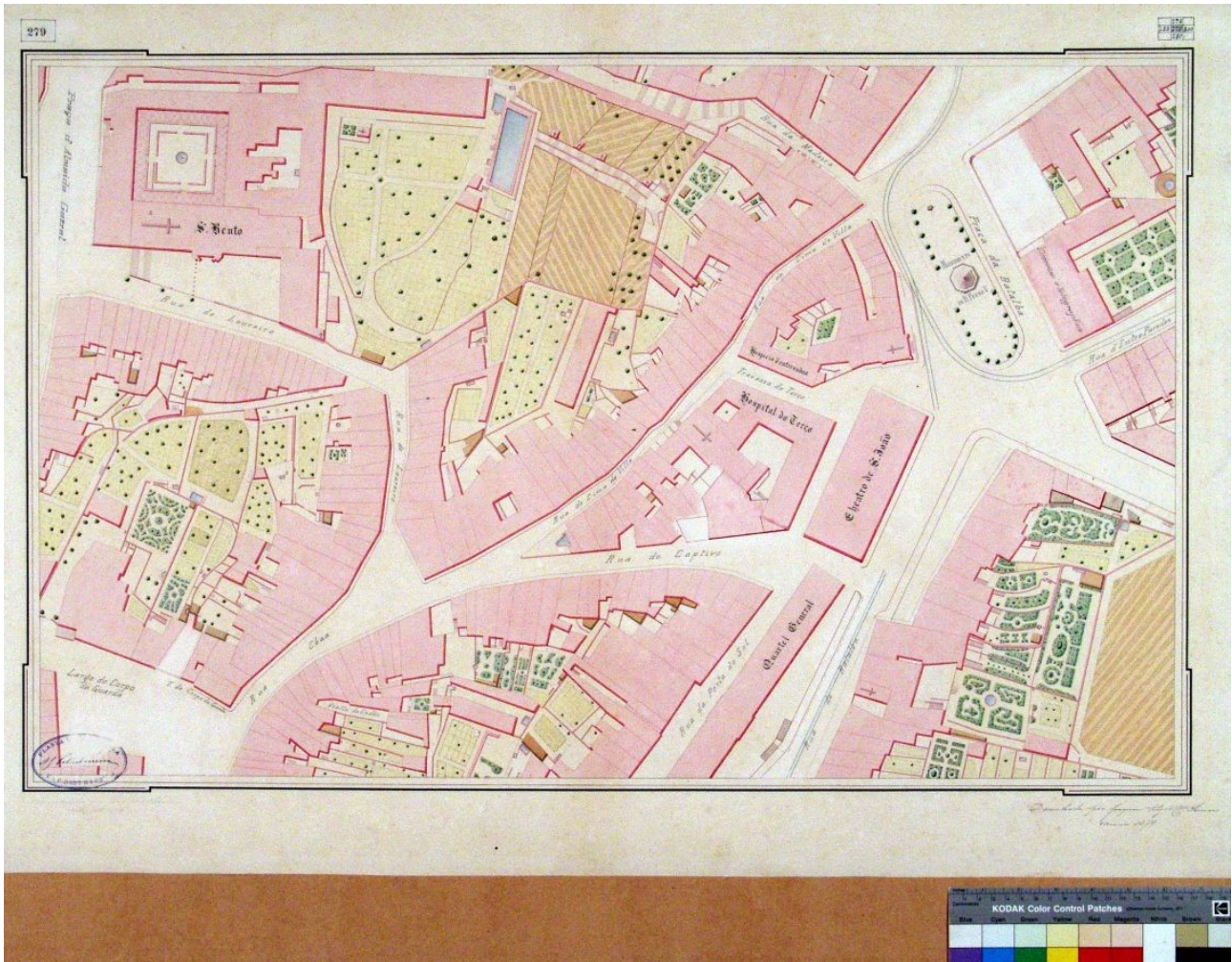


Fig. 28 Porto in 1892, Telles Ferreira survey of D. Pedro Square on a scale of 1/500

Type	Survey drawing	Used as source in:
Description		<u>Plans</u>
Author		Ground Floor - Drawing
Archive	Historical Archive of Porto	
Signature		
Copyright		



Fig. 29 Mipweb Porto in 1892, Telles Ferreira survey of D. Pedro Square in interactive historical maps of Porto

Type	Drawn Reconstruction	Used as source in:
Description		Plans
Author		Ground Floor – Drawing
Archive		
Signature		
Copyright		



Fig. 37 Porto Praça de D.jpg

Type Photograph

Description

Author

Archive

Signature

Copyright

Used as source in:

Elevations

South Elevation – Drawing



Fig. 38 3 Reis Magos Chapel

Type Photograph

Description

Author

Archive

Signature

Copyright

Used as source in:

[Elevations](#)

East Elevation – Drawing



Fig. 39 Interior image of the city hall

Type Photograph

Description

Author

Archive

Signature

Copyright

Used as source in:

Elevations

South Elevation – Drawing

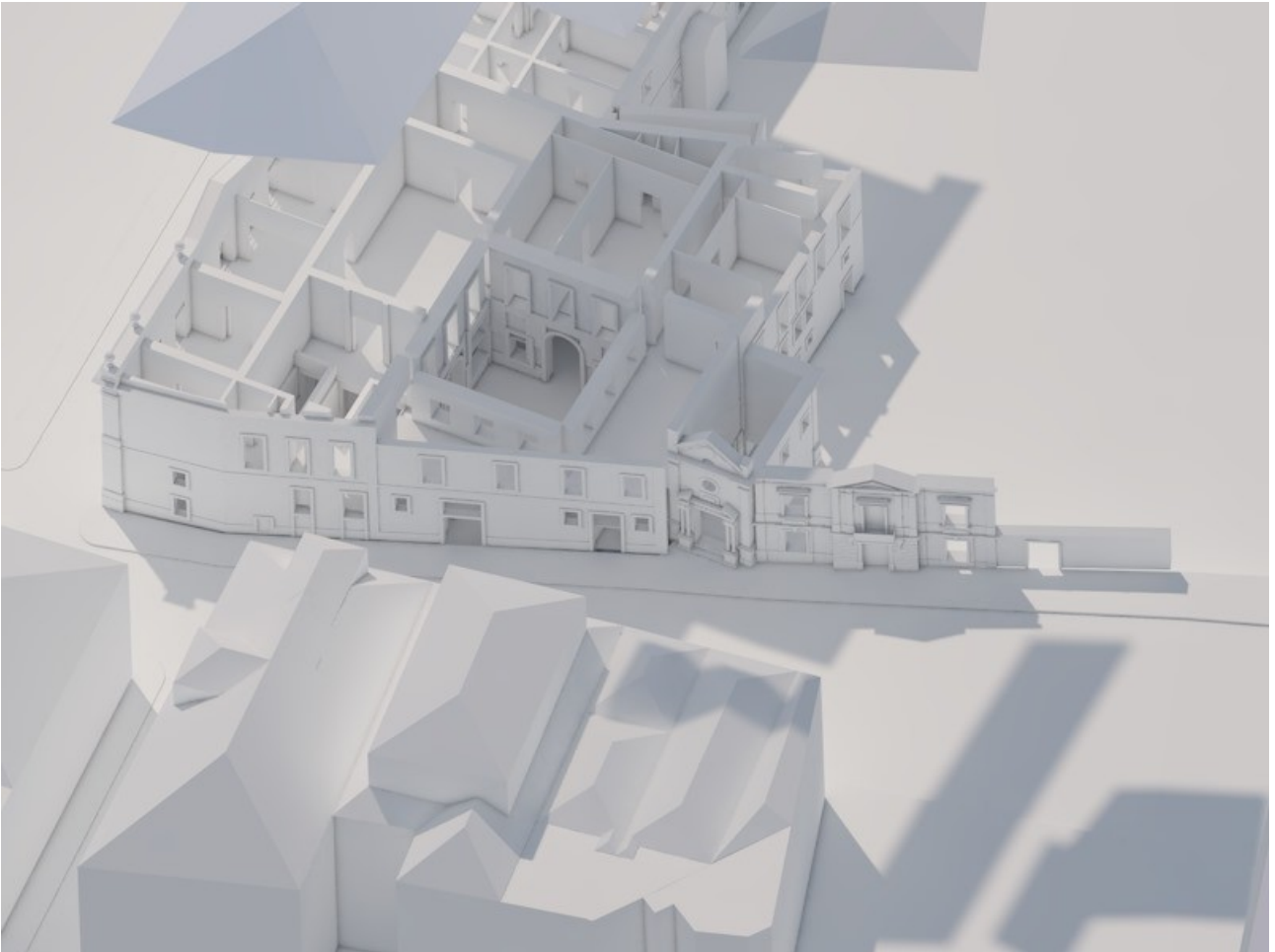


Fig. 56 West Elevation

Type

Description

Author

Archive

Signature

Copyright



Fig. 57 Plan for the ground floor of the building in Rua dos Reis Magos

Type Drawing

Used as source in:

Description Plan for the ground floor of the building in Rua dos Reis Magos and partial plan of the Paços do Concelho building, by João Francisco de Guimarães, approved by the City Council on 1819-12-22.

Plans

Ground Floor - Drawing

Author João Francisco de Guimarães

Archive Historical Archive of Porto

Signature

Copyright

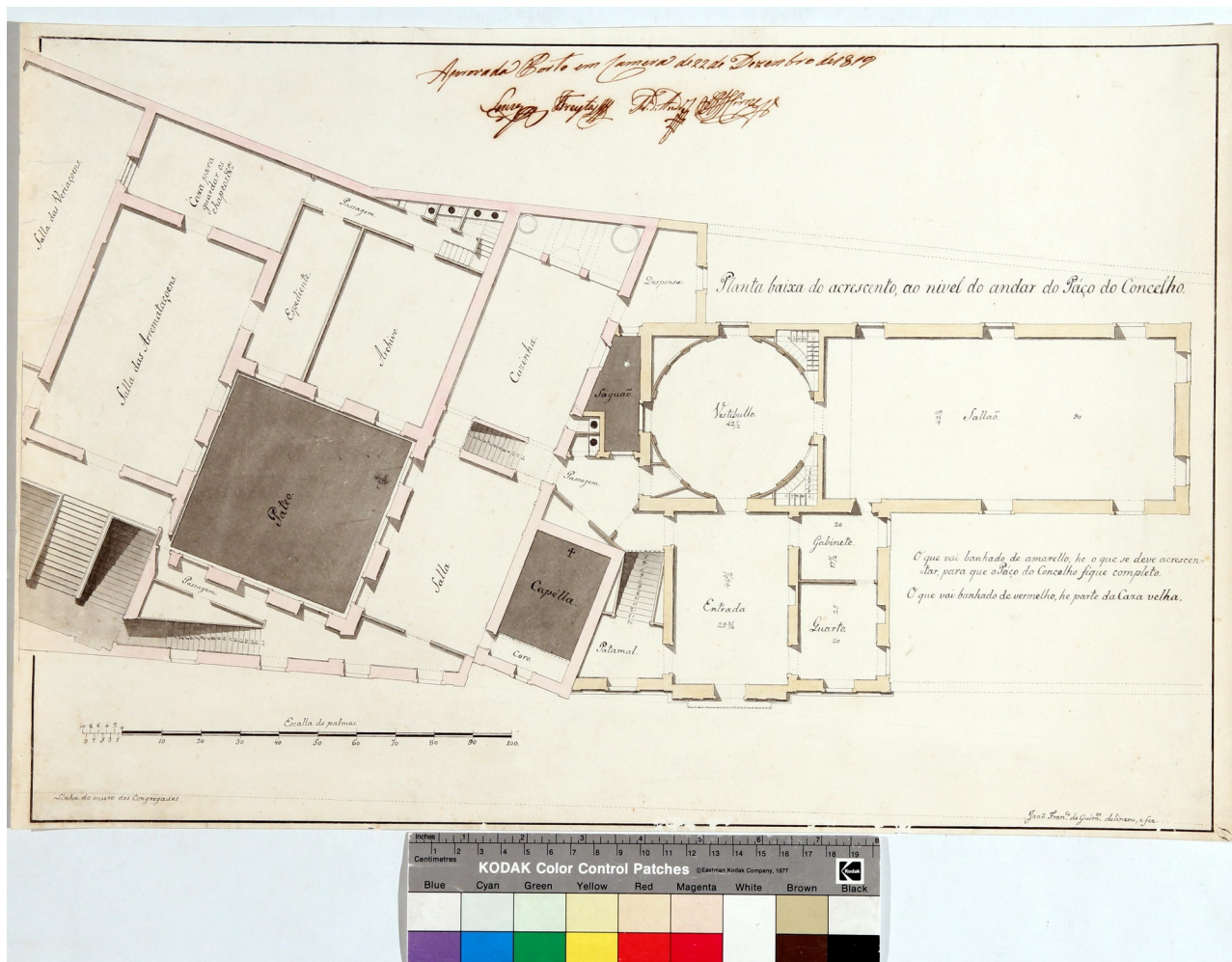


Fig. 60 Plan for the first floor of the building in Rua dos Reis Magos

Type Drawing carried out

Used as source in:

Description Plan for the first floor of the building in Rua dos Reis Magos and partial plan of the Paços do Concelho building, by João Francisco de Guimarões, approved by the Town Council on 1819-12-22.

Plans

Ground Floor – Drawing

Author Francisco de Guimarões

Archive Historical Archive of Porto

Signature

Copyright



Fig. 63 Ground Floor

Type
Description
Author
Archive
Signature
Copyright

Used as area image in:
Plans
Ground Floor

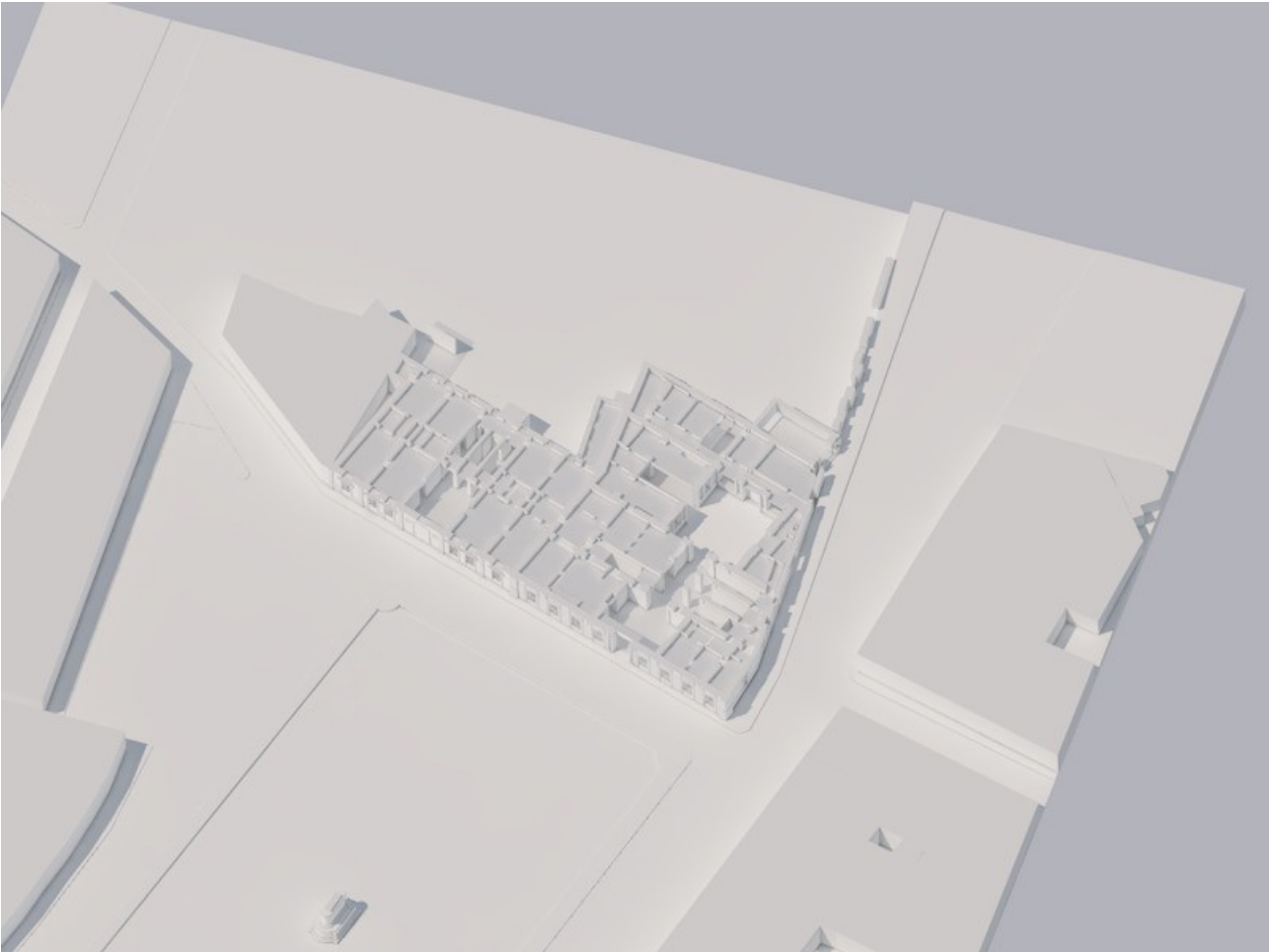


Fig. 64 Half Floor

Type
Description
Author
Archive
Signature
Copyright

Used as area image in:

Plans
Half Floor

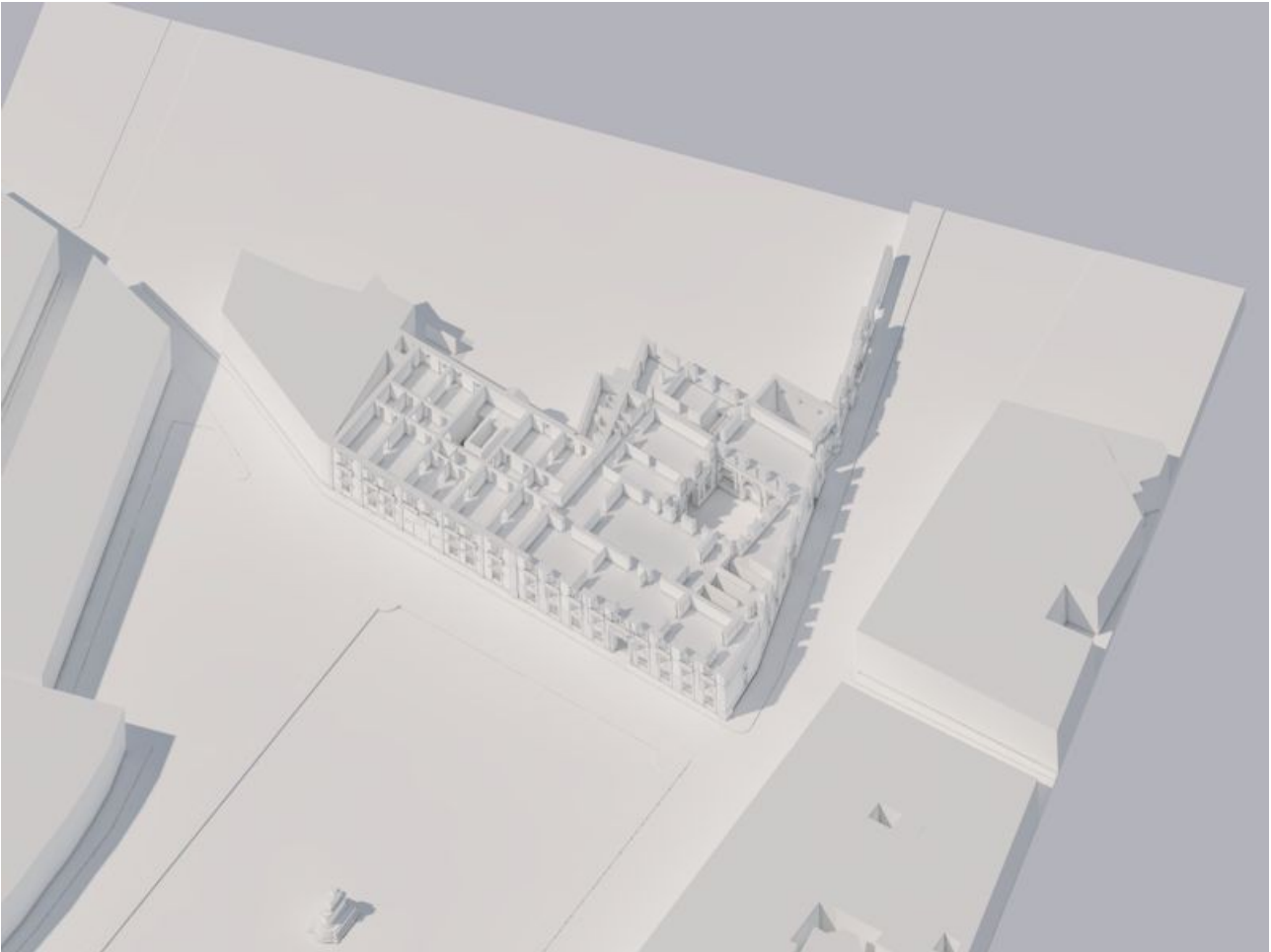


Fig. 65 First Floor

Type
Description
Author
Archive
Signature
Copyright

Used as area image in:

Plans
First Floor



Fig. 66 East Elevation

Type
Description
Author
Archive
Signature
Copyright

Used as area image in:

Elevations
East Elevation



Fig. 70 South Elevation

Type
Description
Author
Archive
Signature
Copyright

Used as area image in:

[Elevations](#)

South Elevation