

# Singular building of ancient Iberian city Castellet de Banyoles



### Description

The Tivissa's Castellet de Banyoles site, is one of the most important Iberian villages of Catalonia and belongs to the Iberian route. The Iberian village was accidentally discovered in 1912 when some earrings, bracelets,

rings and a mirror's handle as well as twenty nine coins of treasure were found. Later, in 1925, a pair of bronze oxen was found, but it was in 1927 when the most important discovery happened, then the dig of the village began: the Tivissa Treasure.

Castellet de Banyoles was an Iberian society and urban nucleus in the fight for control of the Ebro river located in the municipal territory of Tivissa, Ribera de Ebro, Tarragona. It is located in the center of the so-called Cubeta de Mora, a wide extension of 7,000 ha. of agricultural land, and boasts a privileged position on a practically flat triangular geological platform of 4.5 ha. of surface, with a relative altitude of 100 m.

Regarding the shape of the geographical position, determining for Castellet de Banyoles, this triangular platform is "cut out in the first fluvial terrace of the left bank of the Ebro by the torrents that flow into this river, whose course is currently next to the western limit of the mentioned terrace that rises to 127 m.s.n.m." (Niella and Montanero, 2020, p.428).

Likewise, from this privileged topographical elevation, numerous fluvial and land sectors are dominated: starting with the entire depression of Hoya de Mora, Miravet and Garcia, passing through the fluvial traffic in that sector of the river and the land route that unifies the Hoya de Mora with the coast (passing through Tivissa and the Llastres valley) and ending with the path towards the mouths of the Ebro from Pla de Burgar and Perelló.

### Cooperation Partnership

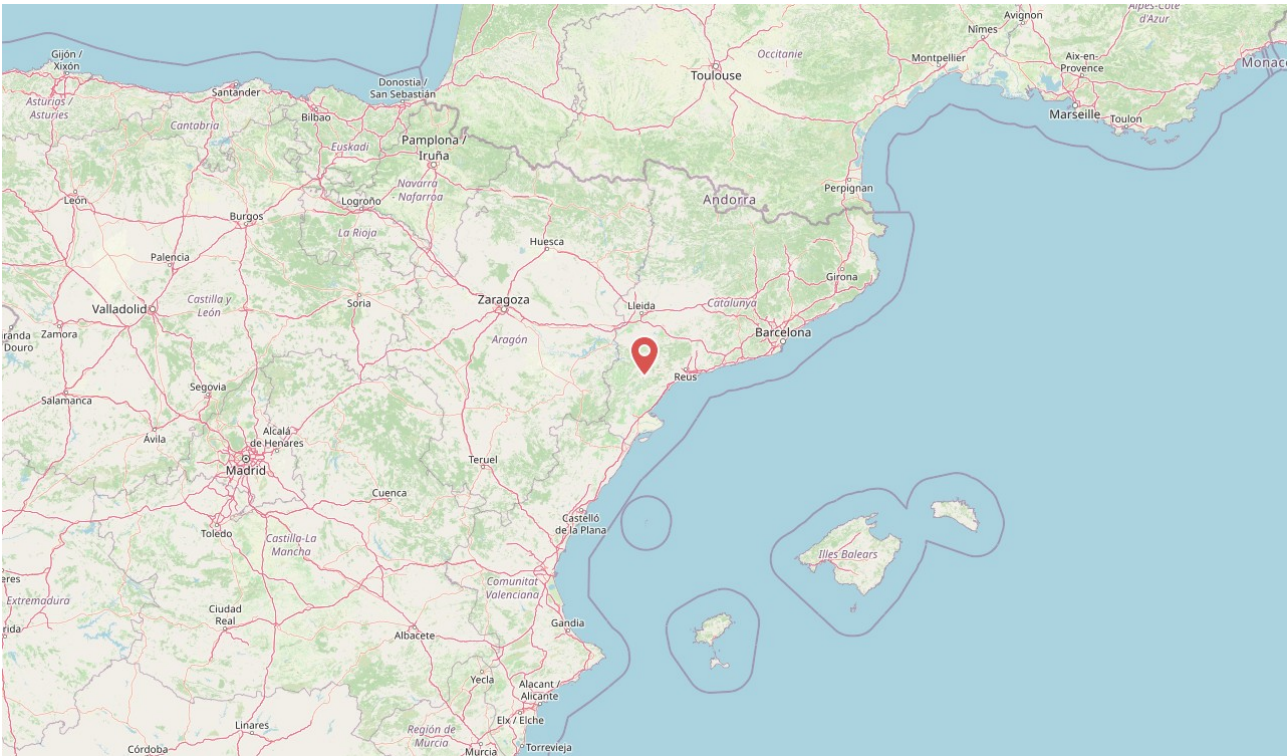
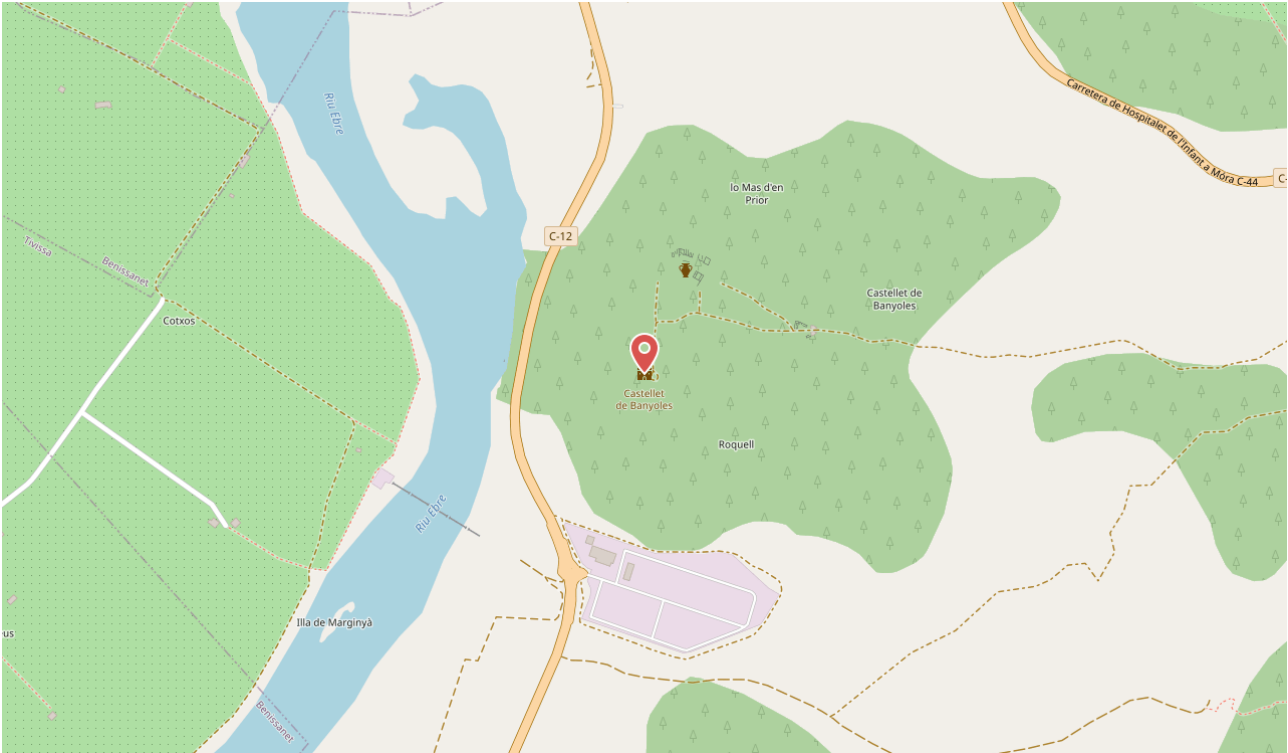
Autonomous University of Barcelona

### Used Software

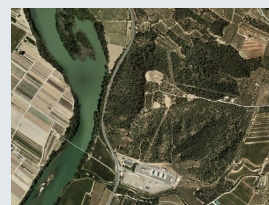
QGIS, Blender, Blender 3.0.0.

### Geo-coordinates

Latitude 41.060743 Longitude 0.664623



External areas



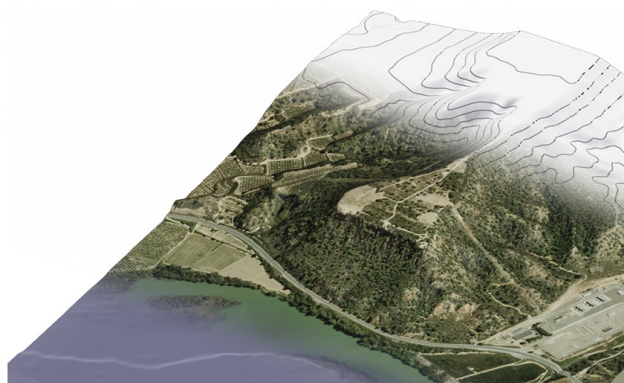
Variant: Landscape and geographical environment

Working state

Using the orthophoto system and corresponding to the coordinates of the corresponding area, and the use of free software and open code, which is a Geographic Information System (QGIS), it was possible to obtain various data such as: the delimitation of the exact area of the deposit and references to topographic elevations together with information related to the contour lines of the area.

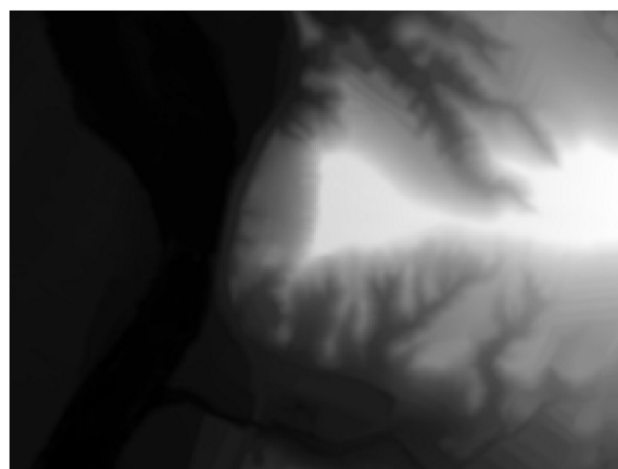
All these two-dimensional information layers have been necessary for the three-dimensional montage of the geographical area of Castellet de Banyoles through Blender, where, after creating the digital montage, another 2 different data layers have been obtained superimposed on the generation of the 3D geometric mesh, on the one hand, the texturing of the mesh using the orthophoto bounded area extracted from the IGN and, on the other hand, the superimposition of the contour lines on the three-dimensional modeling.

Reconstruction



**Fig. 6** Terreno.png

Sources



**Fig. 7** Datos de elevacion.png

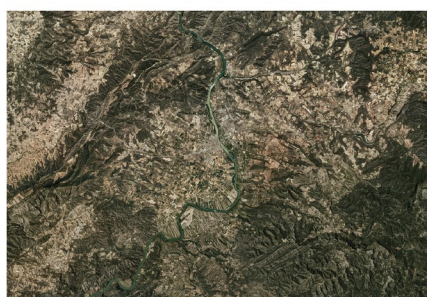




**Fig. 8** castellet\_color (1).jpeg



**Fig. 9** Cruvas\_de\_nivel.png



**Fig. 10** Mapa zona Castellet.png

Variant: Environment plans

Working state

## Reconstruction

No reconstructions assigned

## Sources

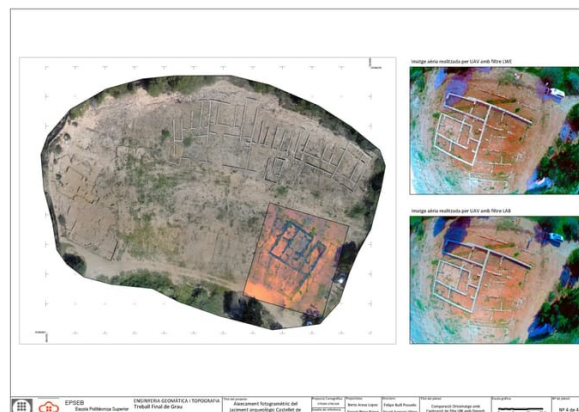


Fig. 24 Plano 4.pdf

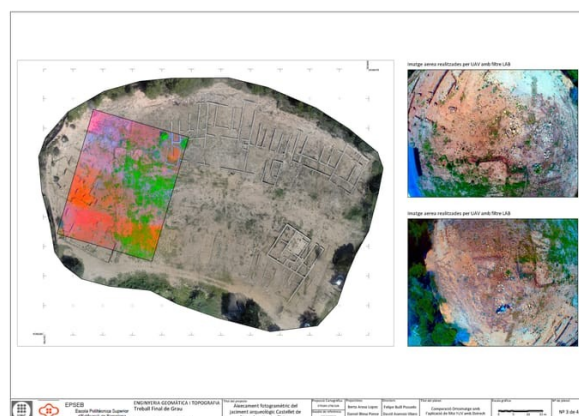


Fig. 25 Plano 3.pdf

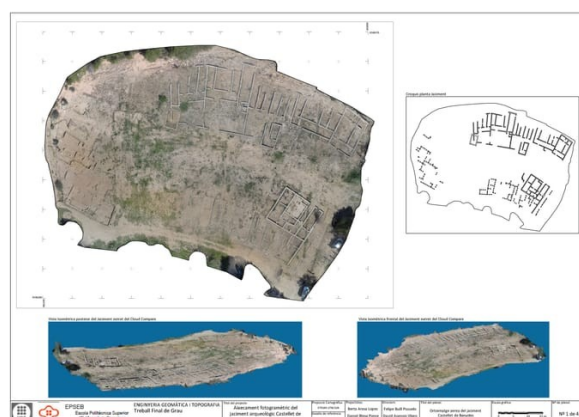


Fig. 26 Plano 1.pdf

Archaeological remains

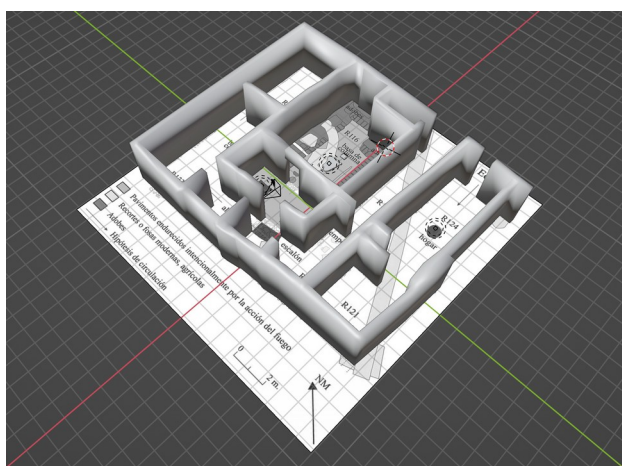


Variant: Reconstruction of archaeological remains

Working state

Focusing the view on the singular building of building block B in zone 1, the virtual reconstruction procedure began with the planimetry technique, using the existing plan of the building to obtain the main reference. After carrying out the corresponding and necessary scaling procedure (scaling which can be seen on the same plane), the irregular outline of the walls was traced and a subsequent process of elevation of the drawing was carried out, establishing the maximum height of the building at about 3 m and a thickness of the walls not exceeding 0.5 m (data collected thanks to direct conversations held with the responsible team of archaeologists).

Reconstruction



**Fig. 11** Modelo\_3D\_inicios (1).jpg

Sources



**Fig. 12** Modelo\_3D\_superpuesto\_al\_plano (1).jpg





**Fig. 13** El\_Castellet\_de\_Banyoles\_Tivissa\_Una\_ciu3 (1).jpg



**Fig. 4** Archaeological remains



Inside the building



Variant: Singular place

Working state

Reconstruction



**Fig. 15** untitledddd.jpg

Sources



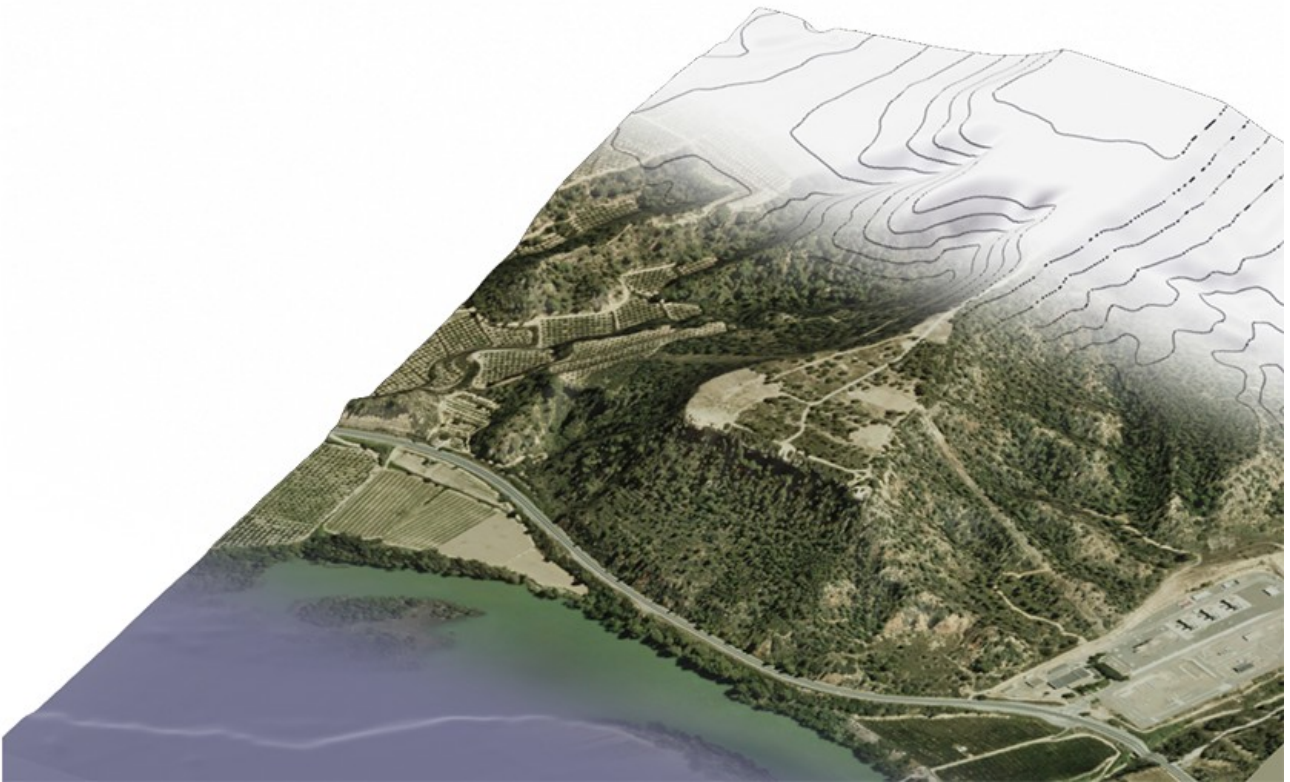
**Fig. 2** External



**Fig. 3** External



**Fig. 17** URBANISME\_Arq\_Domestica 3 (1).jpg



**Fig. 6** Terreno.png



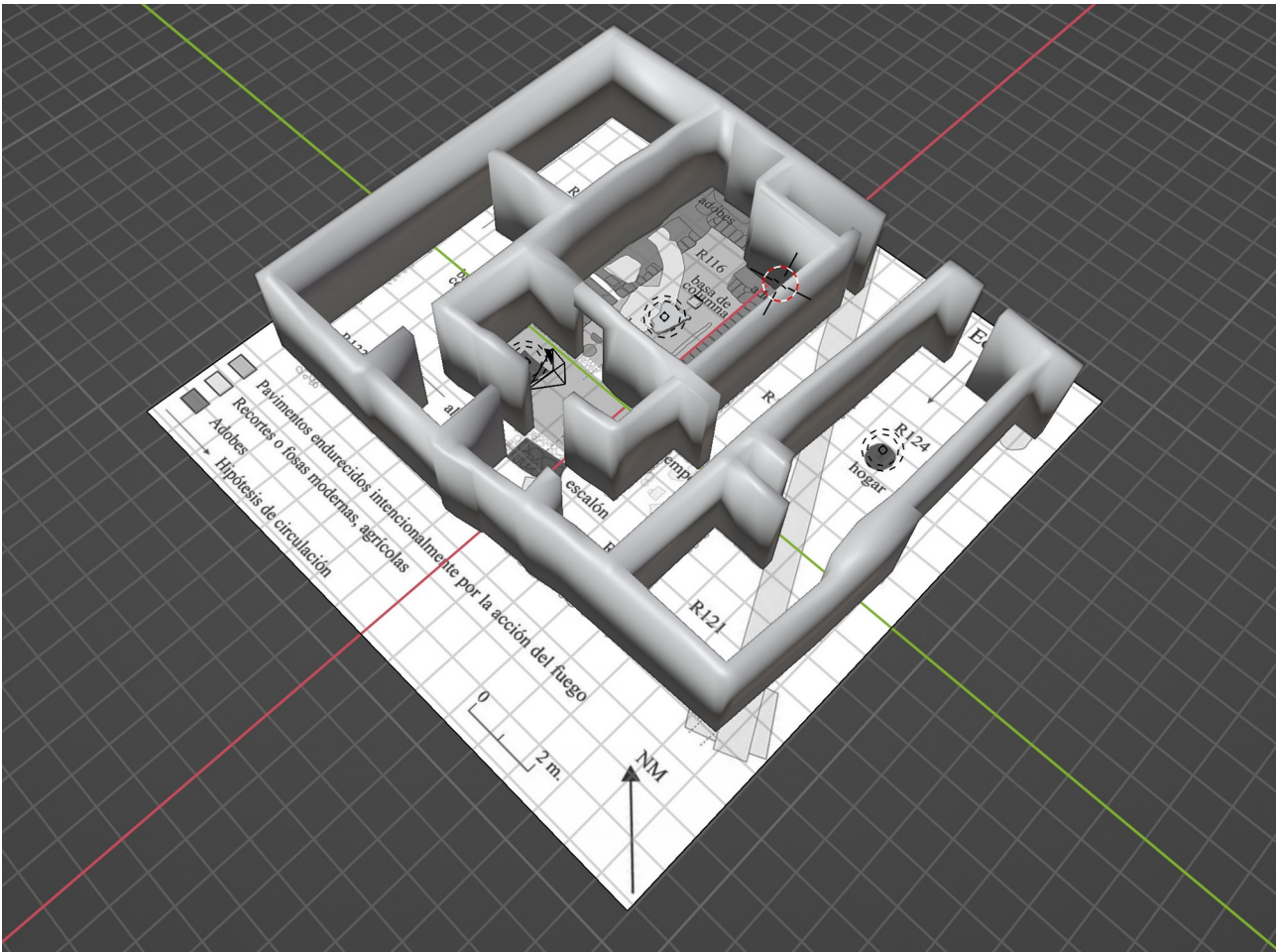


Fig. 11 Modelo\_3D\_inicios (1).jpg



Fig. 15 untitledddd.jpg





**Fig. 18** Portafolio digital Raa.jpg



**Fig. 19** Wireframeoo.png



Fig. 20 untitleddd.jpg



Fig. 21 Imagen1.jpg





**Fig. 22** General.jpg



**Fig. 23** Arriba.png



**Fig. 1** External

**Type**

**Description**

**Author**

**Archive**

**Signature**

**Copyright**





**Fig. 2** External

**Type**  
**Description**  
**Author**  
**Archive**  
**Signature**  
**Copyright**

**Used as source in:**

The singular please

Inside the building



**Fig. 3** External

**Type**  
**Description**  
**Author**  
**Archive**  
**Signature**  
**Copyright**

**Used as source in:**  
[The singular please](#)  
Inside the building





**Fig. 4** Archaeological remains

<b>Type</b>	<b>Used as source in:</b>
<b>Description</b>	<u>The singular please</u>
<b>Author</b>	Archaeological remains
<b>Archive</b>	<b>Used as area image in:</b>
<b>Signature</b>	<u>The singular please</u>
<b>Copyright</b>	Archaeological remains





**Fig. 5** External areas

<b>Type</b>	<b>Used as area image in:</b>
<b>Description</b>	<u><a href="#">The singular please</a></u>
<b>Author</b>	External areas
<b>Archive</b>	
<b>Signature</b>	
<b>Copyright</b>	



**Fig. 7** Datos de elevacion.png

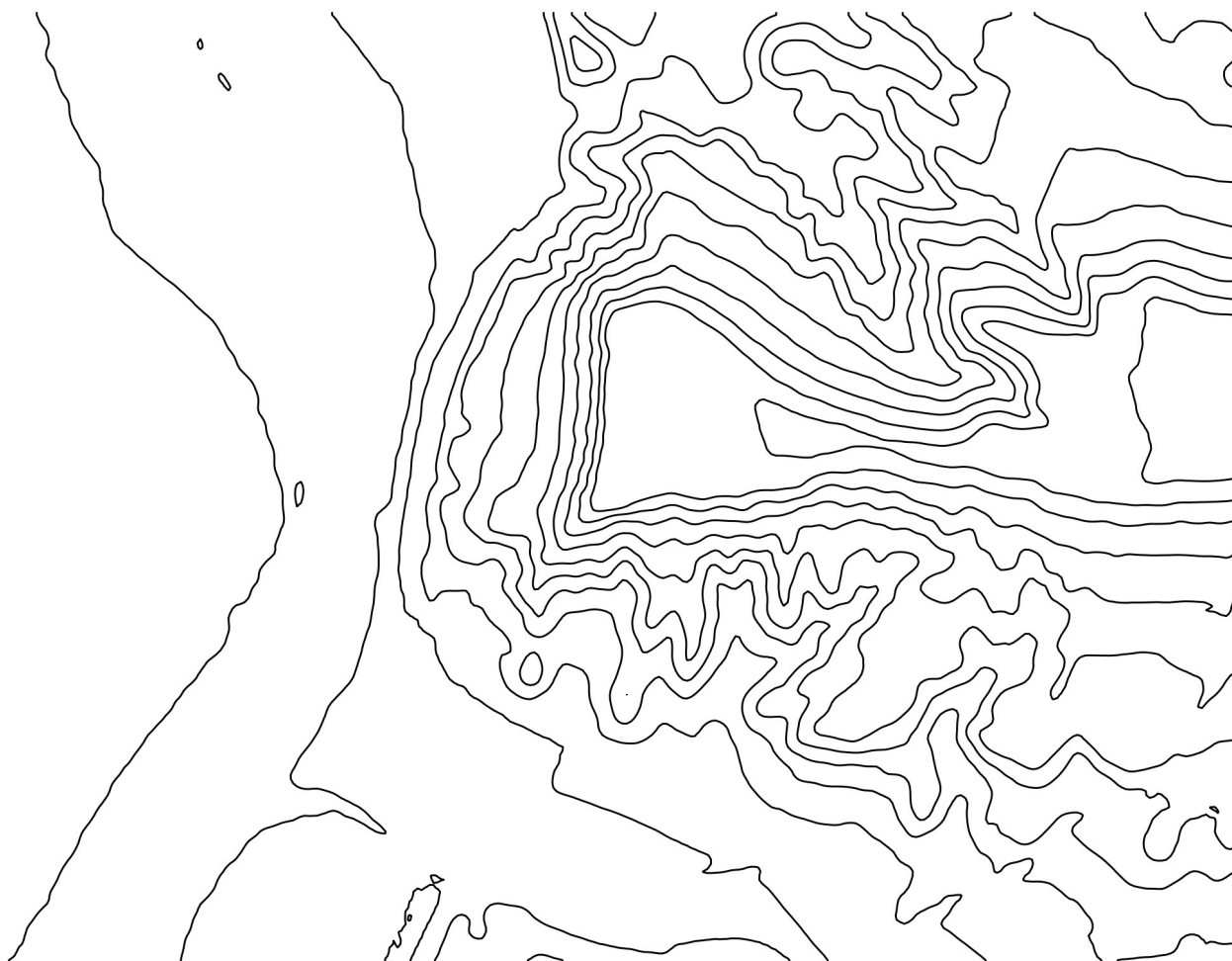
<b>Type</b>	<b>Used as source in:</b>
<b>Description</b>	<u><a href="#">The singular please</a></u>
<b>Author</b>	External areas
<b>Archive</b>	
<b>Signature</b>	
<b>Copyright</b>	





**Fig. 8** castellet\_color (1).jpeg

<b>Type</b>	<b>Used as source in:</b>
<b>Description</b>	<u><a href="#">The singular please</a></u>
<b>Author</b>	External areas
<b>Archive</b>	
<b>Signature</b>	
<b>Copyright</b>	

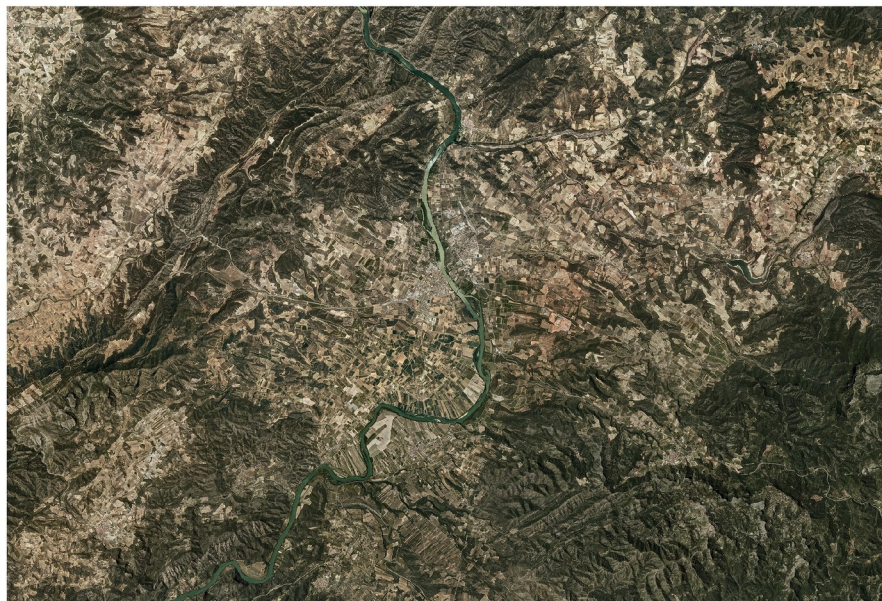


**Fig. 9** Cruvas\_de\_nivel.png

**Type**  
**Description**  
**Author**  
**Archive**  
**Signature**  
**Copyright**

**Used as source in:**  
[The singular please](#)  
External areas





**Fig. 10** Mapa zona Castellet.png

<b>Type</b>	<b>Used as source in:</b>
<b>Description</b>	<u><a href="#">The singular please</a></u>
<b>Author</b>	External areas
<b>Archive</b>	
<b>Signature</b>	
<b>Copyright</b>	



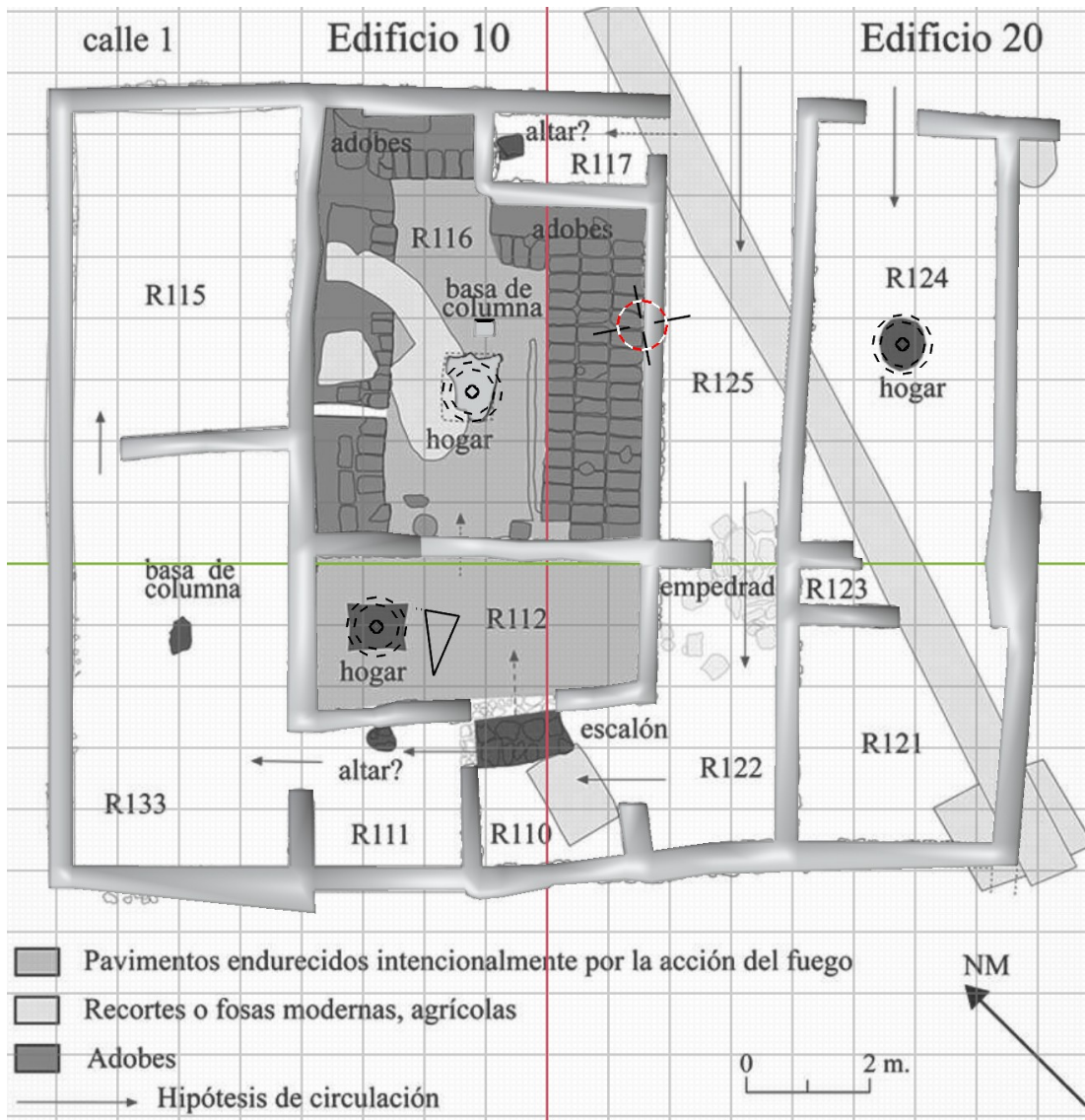


Fig. 12 Modelo\_3D\_superpuesto\_al\_plano (1).jpg

**Type**  
**Description**  
**Author**  
**Archive**  
**Signature**  
**Copyright**

**Used as source in:**  
The singular please  
 Archaeological remains



Fig. 13 El\_Castellet\_de\_Banyoles\_Tivissa\_Una\_ciu3 (1).jpg

<b>Type</b>	<b>Used as source in:</b>
<b>Description</b>	<u>The singular please</u>
<b>Author</b>	Archaeological remains
<b>Archive</b>	
<b>Signature</b>	
<b>Copyright</b>	



**Fig. 14** Inside the building

**Type**  
**Description**  
**Author**  
**Archive**  
**Signature**  
**Copyright**

**Used as area image in:**

[The singular please](#)

Inside the building



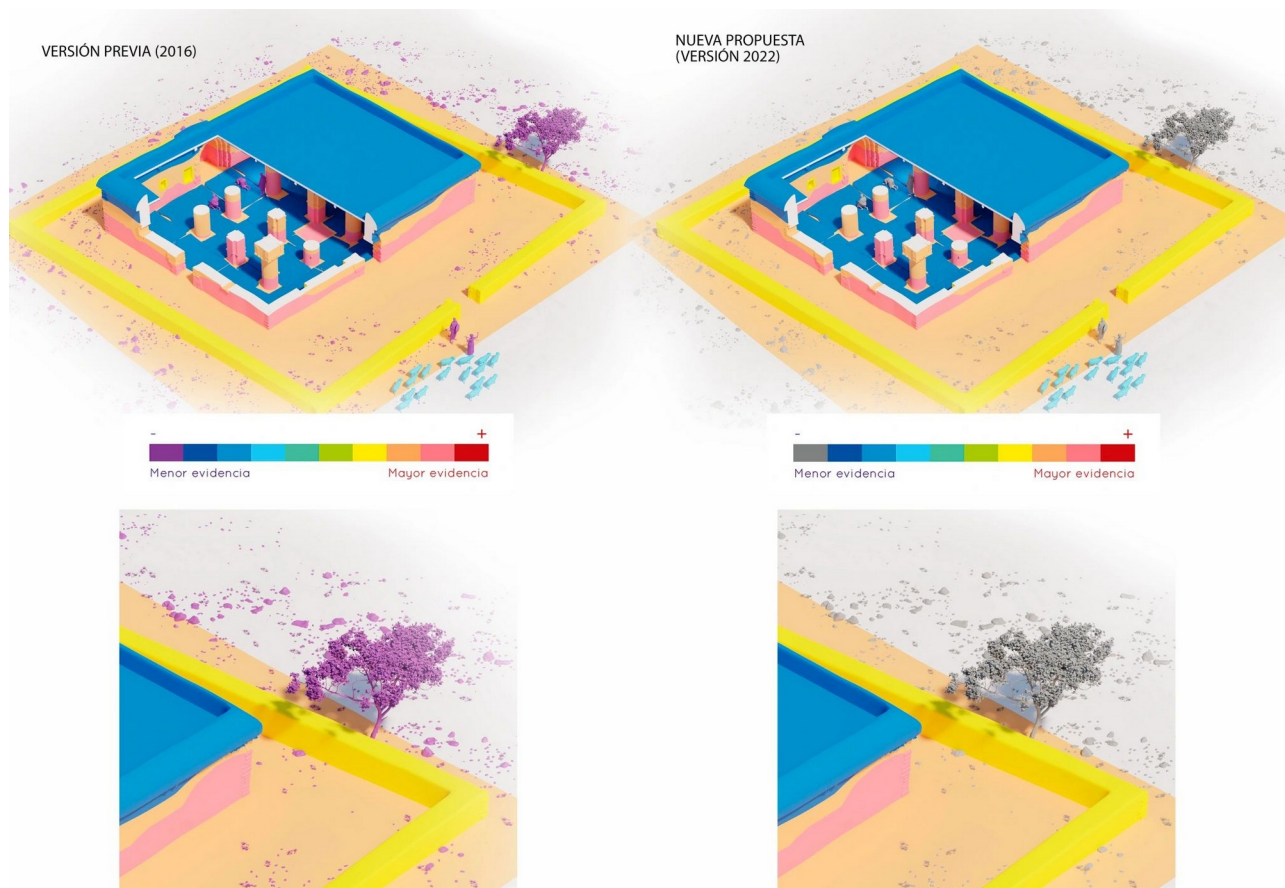


Fig. 16 compos\_nueva\_version\_escala-copia.webp

- Type
- Description
- Author
- Archive
- Signature
- Copyright



Fig. 17 URBANISME\_Arq\_Domestica 3 (1).jpg

**Type**  
**Description**  
**Author**  
**Archive**  
**Signature**  
**Copyright**

**Used as source in:**  
The singular please  
Inside the building

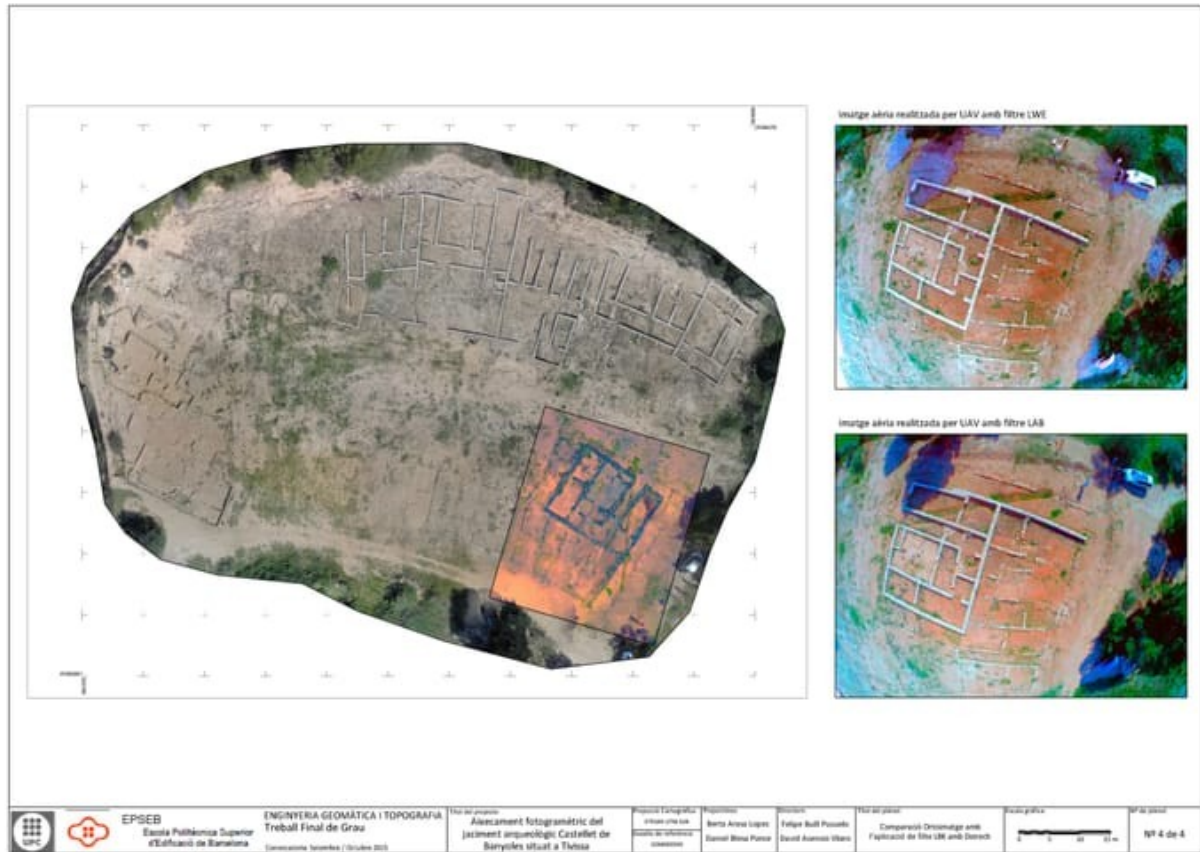


Fig. 24 Plano 4.pdf

<b>Type</b>	<b>Used as source in:</b>
<b>Description</b>	<u>The singular please</u>
<b>Author</b>	External areas
<b>Archive</b>	
<b>Signature</b>	
<b>Copyright</b>	



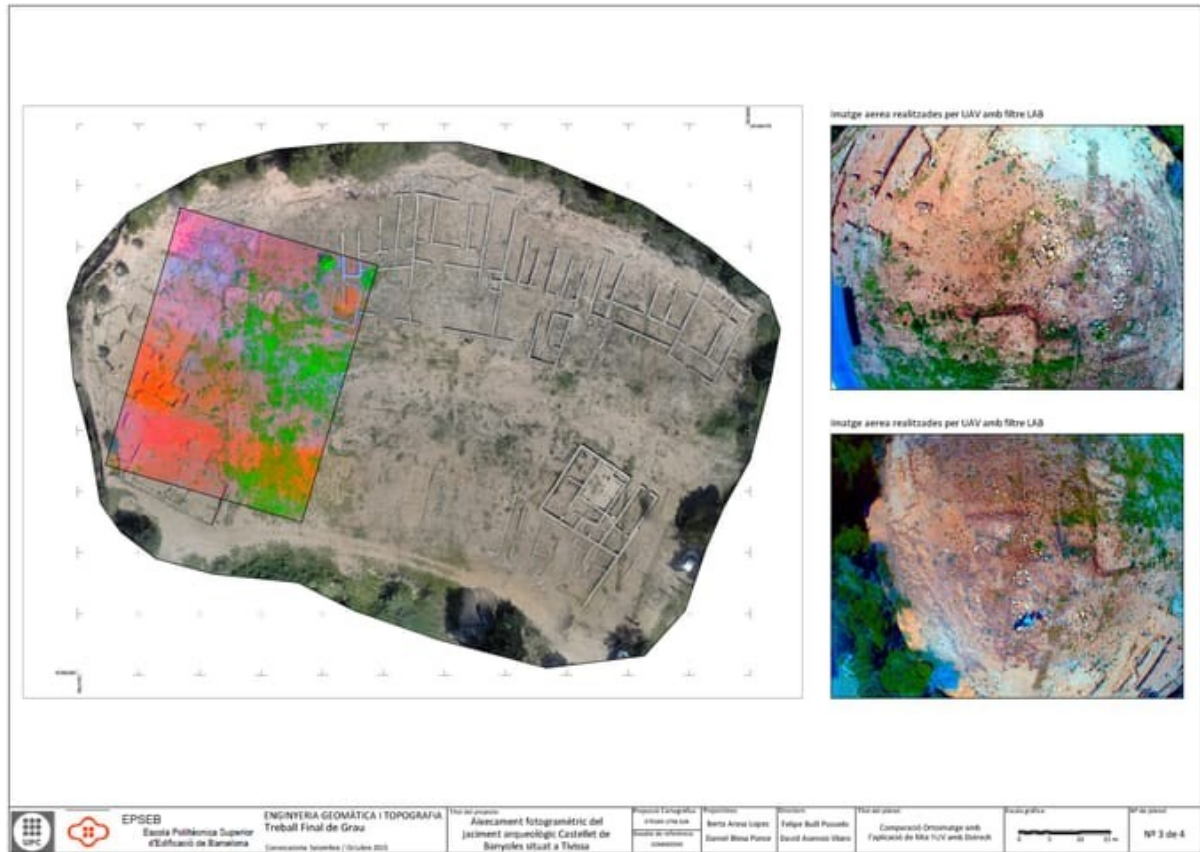


Fig. 25 Plano 3.pdf

**Type**  
**Description**  
**Author**  
**Archive**  
**Signature**  
**Copyright**

**Used as source in:**  
The singular please  
 External areas

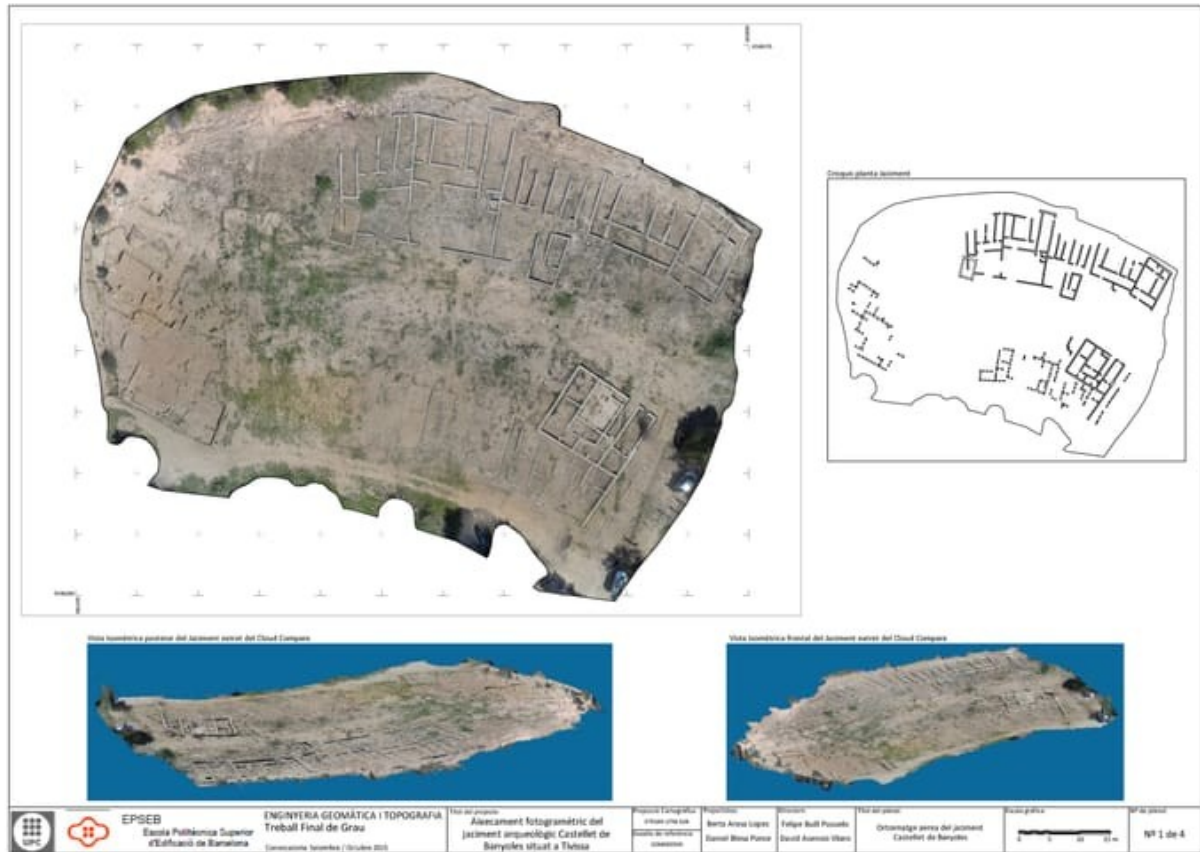


Fig. 26 Plano 1.pdf

**Type**  
**Description**  
**Author**  
**Archive**  
**Signature**  
**Copyright**

**Used as source in:**  
The singular please  
External areas