

Mogielnica



Description

The Mogielnica Synagogue is a wooden synagogue built in the second half of the 19th century in Mogielnica, now a town in Poland, in Mazovia, situated by the Mogielanka river. It was constructed after 1856 on Dół Street, north-east from Mogielnica's market square. After damage caused during the First World War it was renovated in the 1920s. The scope of the work included repairing the collapsed roof, shoring up the plinth and raising the walls. In September 1939, at the beginning of the Second World War, the synagogue was burnt down by the Germans. The building was never reconstructed.

The synagogue was oriented, located on the road leading from Mogielnica to Grójec. It was a two-storey building, made of a log construction, with approximate dimensions of 10 by 16 metres and a height of about 10 metres. It was designed on a rectangular plan consisting of two main parts - the main hall, with roughly square proportions, and a vestibule with a separate babiniec - the women's prayer room. The front elevation is symmetrical with a triaxial two-storey column portico. On the first floor, a another babiniec, accessible from an external balcony. The whole covered with a hipped Polish hipped roof, carpentry, probably covered with wooden shingles. The interior is partly polychromed, mainly with floral and animal motifs. The author of the original design is unknown.

Scientific Advisor

Igor Bajena, Piotr Kuroczyński

Modelling

Adam Miziołek , Julia Wiśniewska

Cooperation Partnership

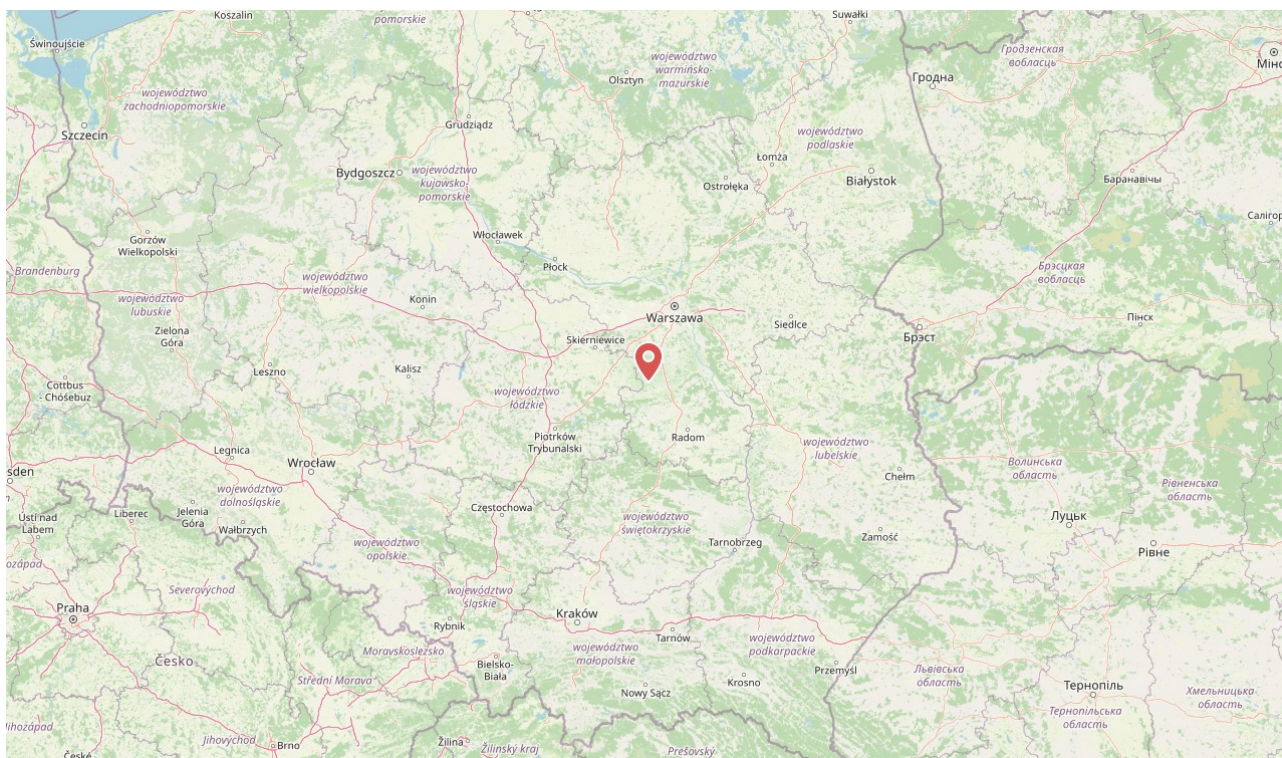
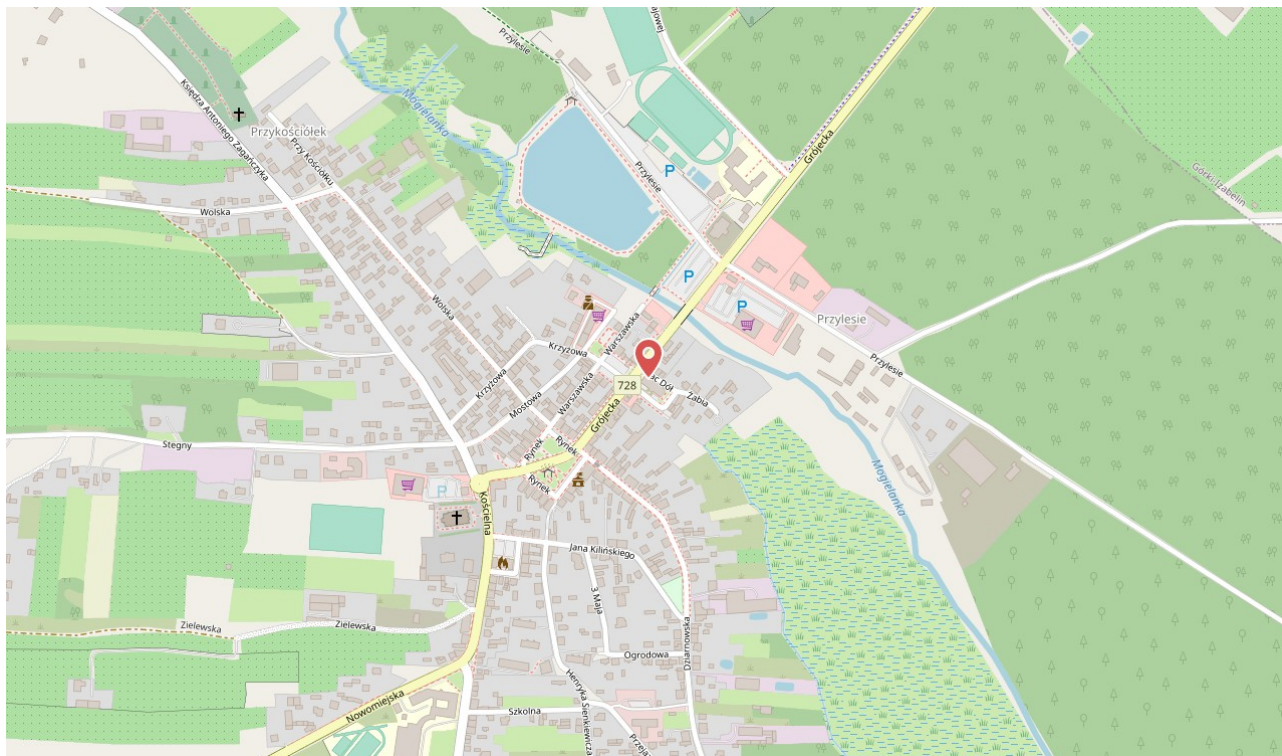
Politechnika Łódzka

Used Software

Archicad

Geo-coordinates

Latitude 51.694899 Longitude 20.725054



SYNAGOGUE

Variant: 1920's_Wisniewska_Miziolek

Working state

Reconstruction

Sources

No sources assigned

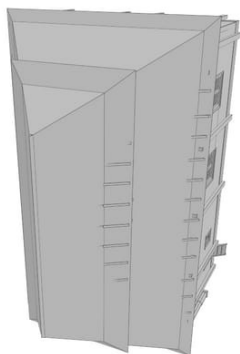


Fig. 13 SY_Mogielnica_reconstruction.obj

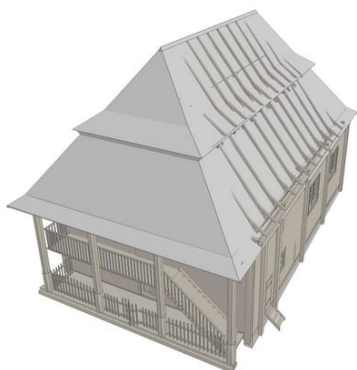


Fig. 14 SY_Mogielnica_reconstruction.3ds

SYNAGOGUE - STRUCTURE - Pillars - Columns

Variant: 1920's_Wisniewska_Miziolek

Working state

Reconstruction



Fig. 12 syn_1.png

Sources

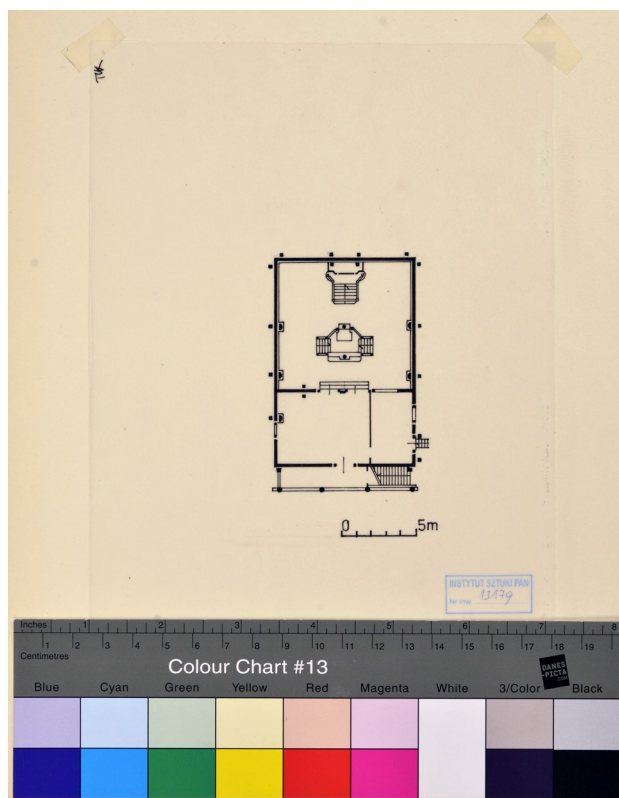


Fig. 1 001_Mogielnica_IS_PAN_plan_01

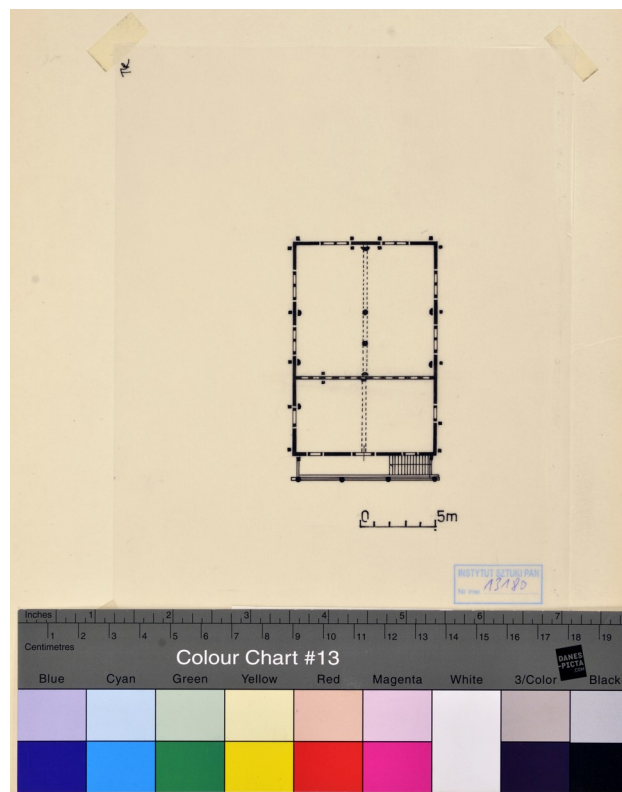


Fig. 2 003_Mogielnica_IS_PAN_plan_03

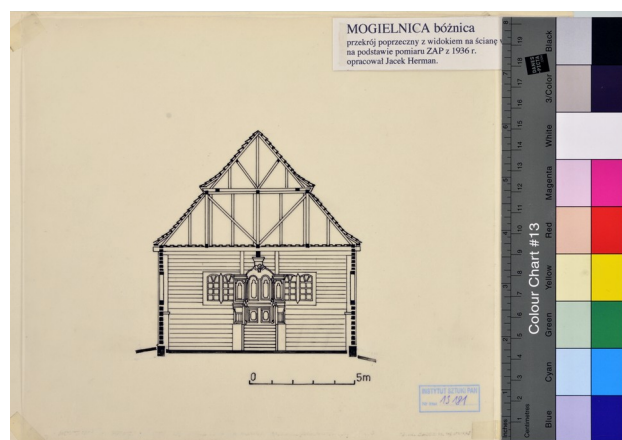


Fig. 3 005_Mogielnica_IS_PAN_section_01



Fig. 4 006_Mogielnica_IS_PAN_section_02

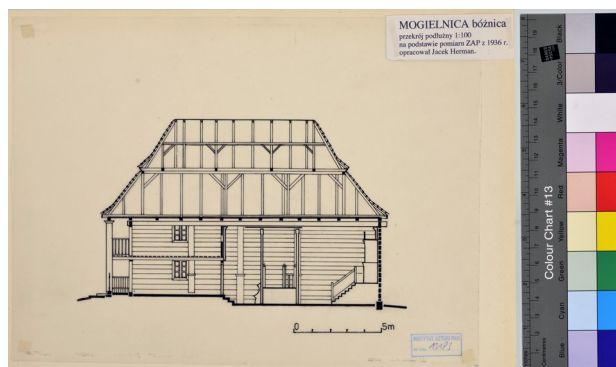


Fig. 5 008_Mogielnica_IS_PAN_section_04



Fig. 6 010_Mogielnica_IS_PAN_elevation_01



Fig. 7 012_Mogielnica_IS_PAN_elevation_03



Fig. 9 021_Mogielnica_Sztetl_interior_01



Fig. 12 syn_1.png

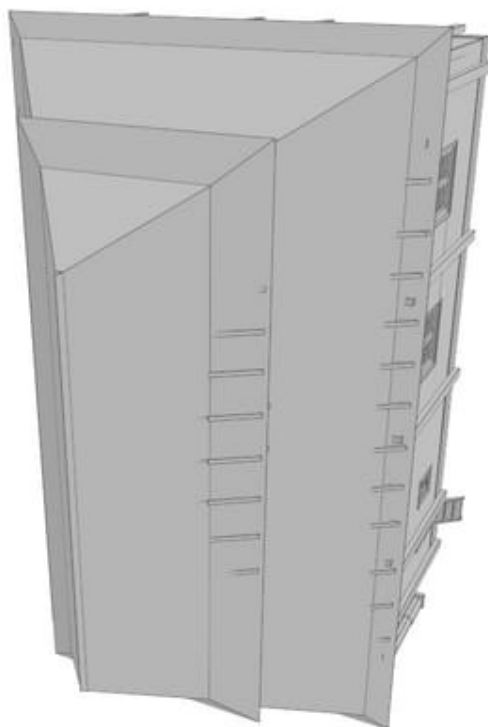


Fig. 13 SY_Mogielnica_reconstruction.obj



Fig. 14 SY_Mogielnica_reconstruction.3ds

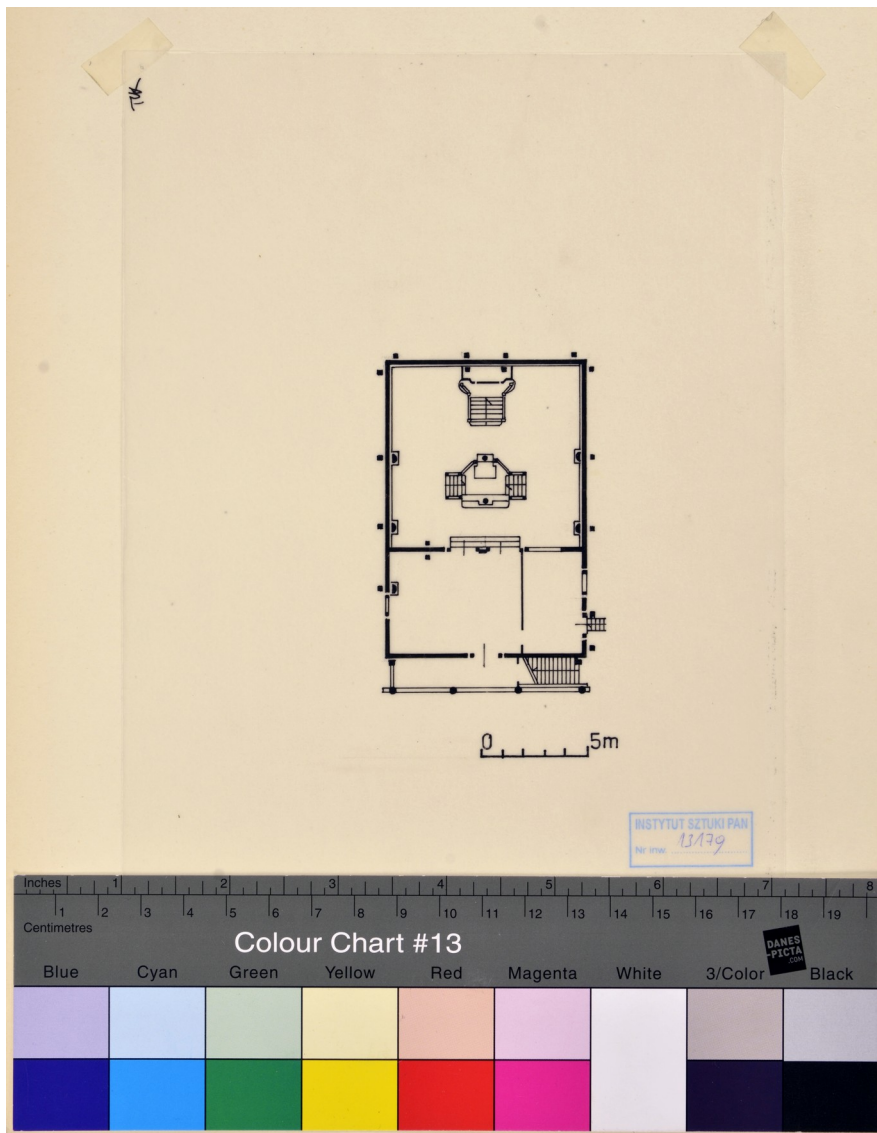


Fig. 1 001_Mogielnica_IS_PAN_plan_01

Type Survey drawing

Used as source in:

Description Ground floor plan of the synagogue in Mogielnica

SYNAGOGUE – STRUCTURE – Pillars – Columns

Author Jacek Herman

Archive Collections of the Institute of Art of the Polish Academy of Sciences, Warsaw

Signature 13179

Copyright

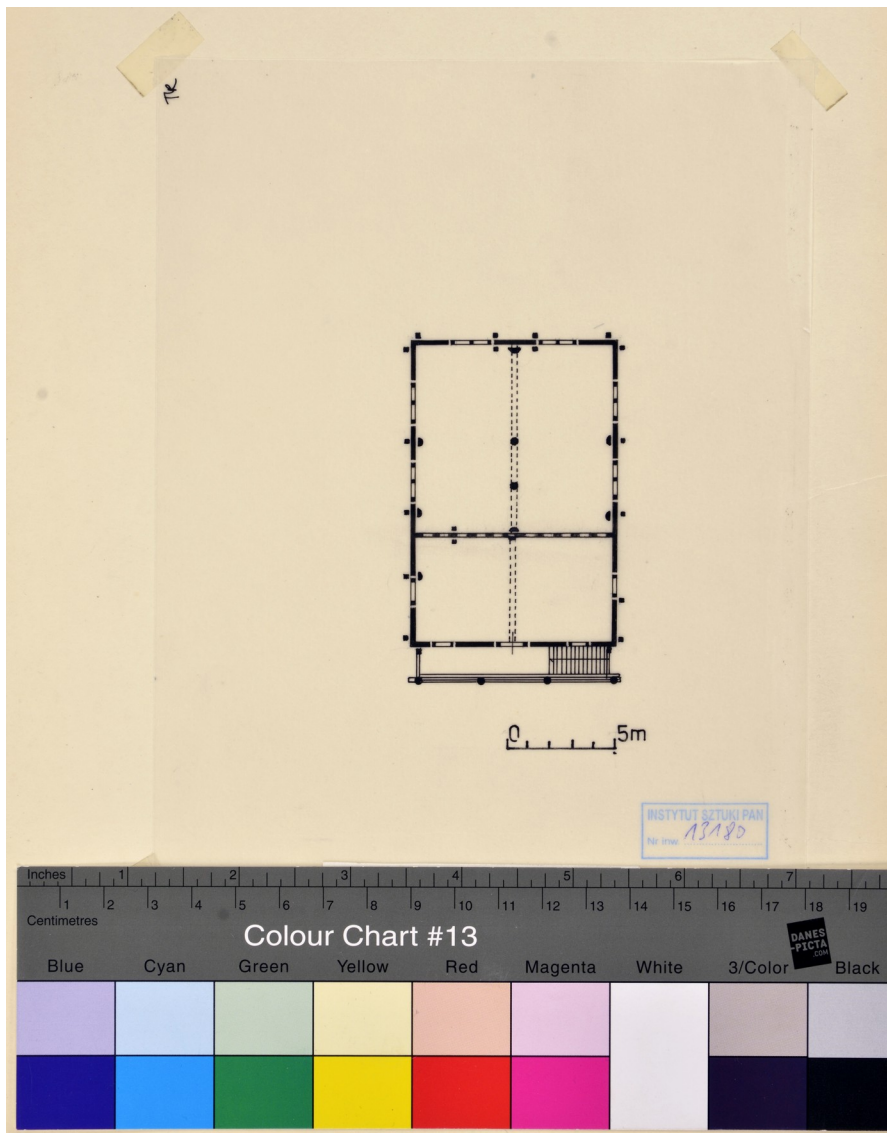


Fig. 2 003_Mogielnica_IS_PAN_plan_03

Type Survey drawing

Used as source in:

Description First floor plan of the synagogue in Mogielnica

SYNAGOGUE – STRUCTURE – Pillars – Columns

Author Jacek Herman

Archive Collections of the Institute of Art of the Polish Academy of Sciences, Warsaw

Signature 13180

Copyright

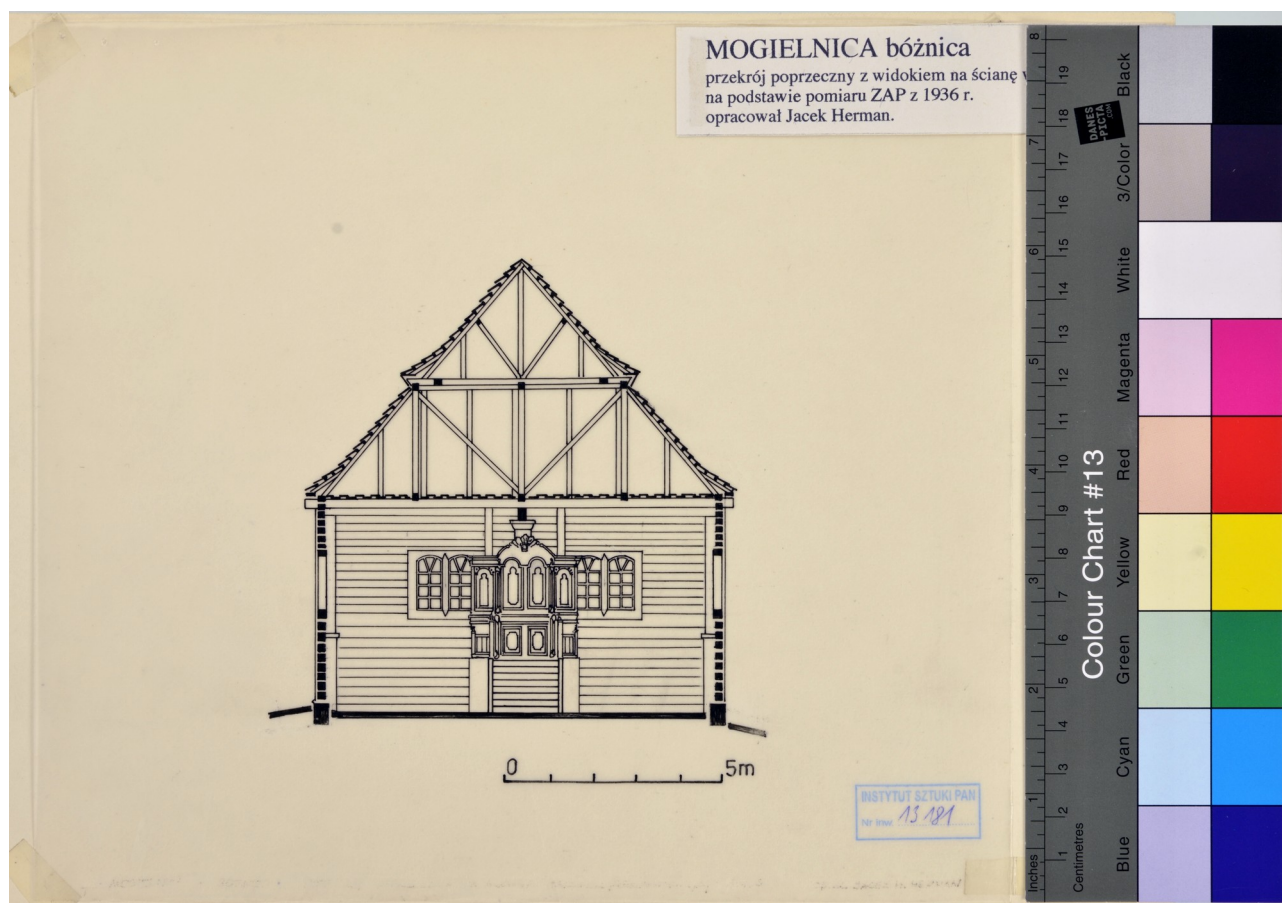


Fig. 3 005_Mogielnica_IS_PAN_section_01

Type Survey drawing

Description Cross section of the synagogue in Mogielnica looking towards the south wall and the Holy Ark

Author Jacek Herman

Archive Collections of the Institute of Art of the Polish Academy of Sciences, Warsaw

Signature 13181

Copyright

Used as source in:

SYNAGOGUE – STRUCTURE – Pillars – Columns

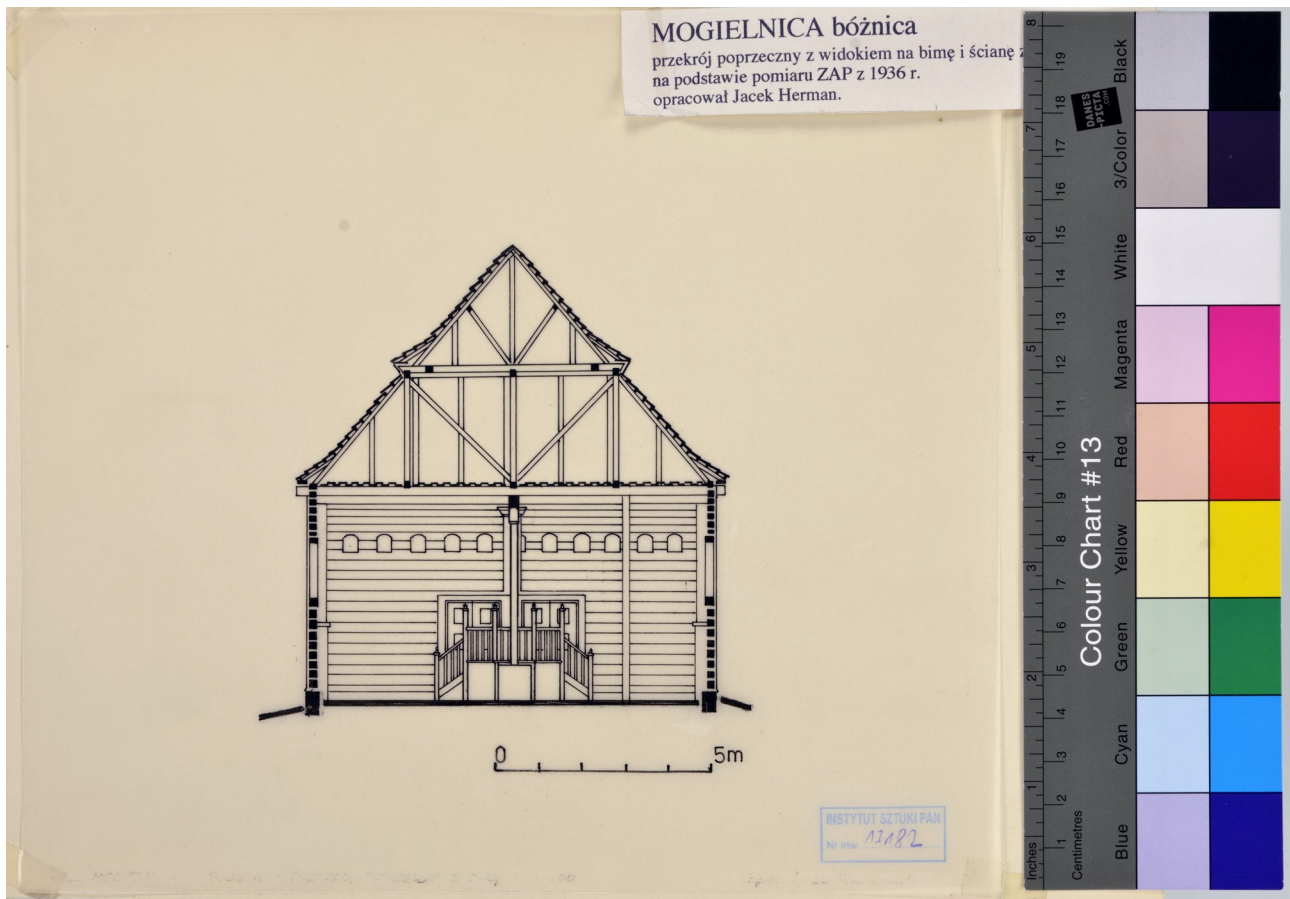


Fig. 4 006_Mogielnica_IS_PAN_section_02

Type Survey drawing

Description Cross section of the synagogue in Mogielnica looking towards mechitza and bimah

Author Jacek Herman

Archive Collections of the Institute of Art of the Polish Academy of Sciences, Warsaw

Signature 13182

Copyright

Used as source in:

SYNAGOGUE – STRUCTURE – Pillars – Columns

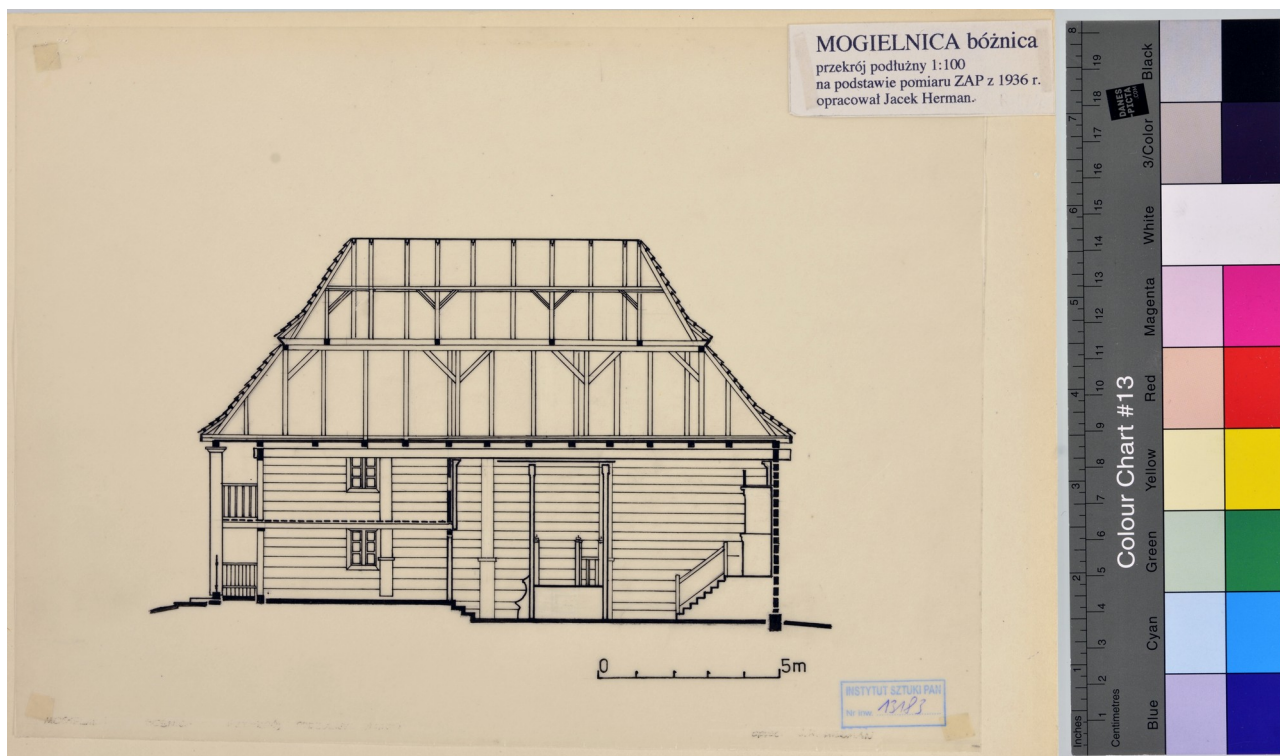


Fig. 5 008_Mogielnica_IS_PAN_section_04

Type Survey drawing

Used as source in:

Description Longitudinal section of the synagogue in Mogielnica looking towards east wall

SYNAGOGUE – STRUCTURE – Pillars – Columns

Author Jacek Herman

Archive Collections of the Institute of Art of the Polish Academy of Sciences, Warsaw

Signature 13183

Copyright

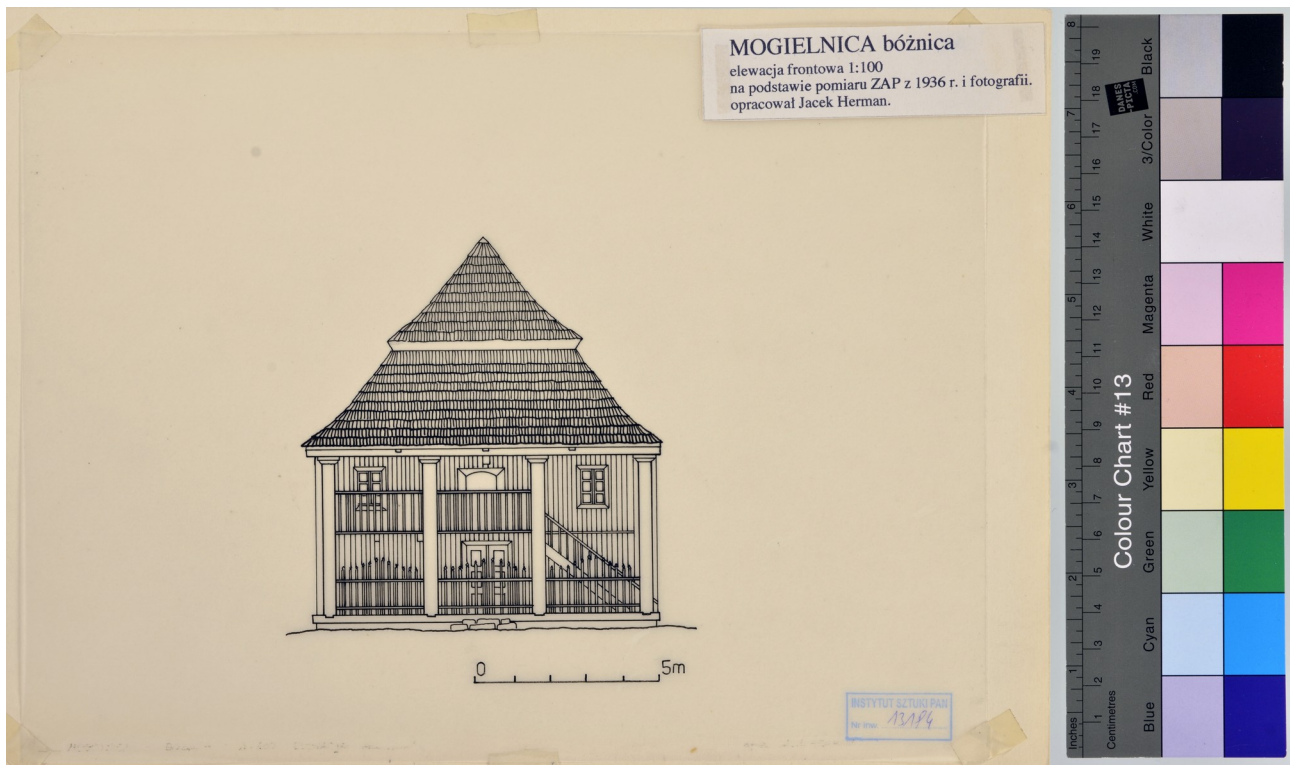


Fig. 6 010_Mogielnica_IS_PAN_elevation_01

Type Survey drawing

Used as source in:

Description Front northern elevation of the synagogue in Mogielnica

SYNAGOGUE – STRUCTURE – Pillars – Columns

Author Jacek Herman

Archive Collections of the Institute of Art of the Polish Academy of Sciences, Warsaw

Signature 13184

Copyright

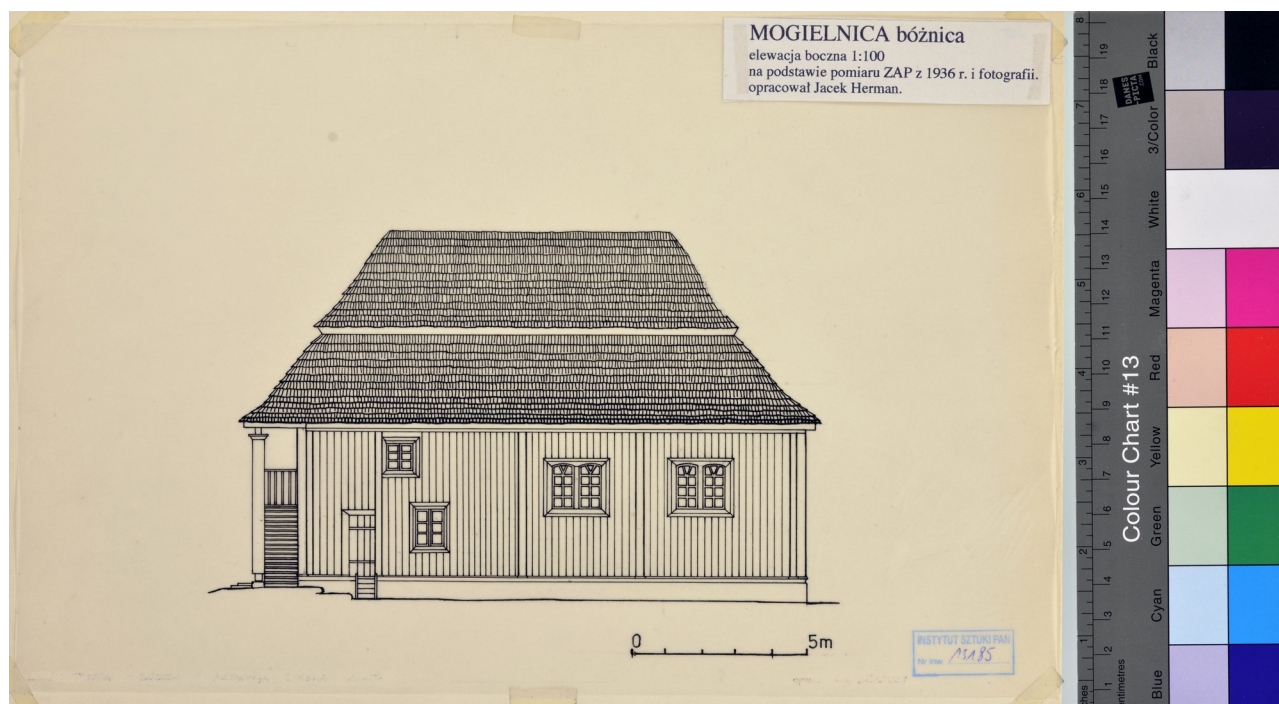


Fig. 7 012_Mogielnica_IS_PAN_elevation_03

Type	Survey drawing	Used as source in:
Description	West elevation of the synagogue in Mogielnica	SYNAGOGUE – STRUCTURE – Pillars – Columns
Author	Jacek Herman	
Archive	Collections of the Institute of Art of the Polish Academy of Sciences, Warsaw	
Signature	13185	
Copyright		



Fig. 9 021_Mogielnica_Sztetl_interior_01

Type Photograph

Used as source in:

Description Mogielnica. Interior of the main hall, looking towards bimah and the west wall, before rebuilding, before 1920

SYNAGOGUE – STRUCTURE – Pillars – Columns

Author Unknown

Archive Collections of the Institute of Art of the Polish Academy of Sciences, Warsaw

Signature 8281

Copyright



Fig. 10 022_Mogielnica_Sztetl_interior_02

Type Photograph

Description The interior of the synagogue in Mogielnica with Holy Ark before the reconstruction in the 1920s

Author Unknown

Archive Collections of the Institute of Art of the Polish Academy of Sciences, Warsaw

Signature 0093

Copyright

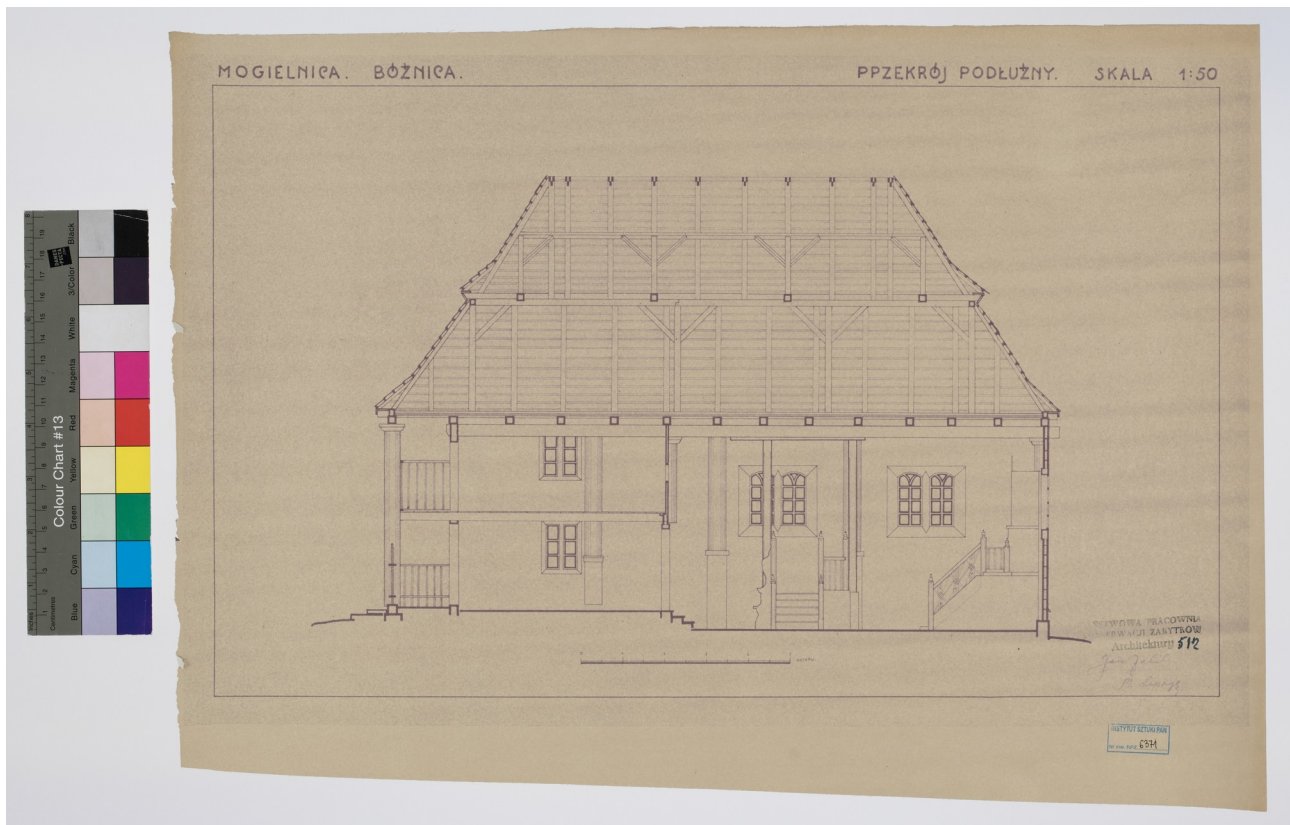


Fig. 15 009_Mogielnica_IS_PAN_section_05

Type Survey drawing

Description Longitudinal section of the synagogue in Mogielnica looking towards east wall

Author Unknown, Illegible

Archive Collections of the Institute of Art of the Polish Academy of Sciences, Warsaw

Signature 6371

Copyright

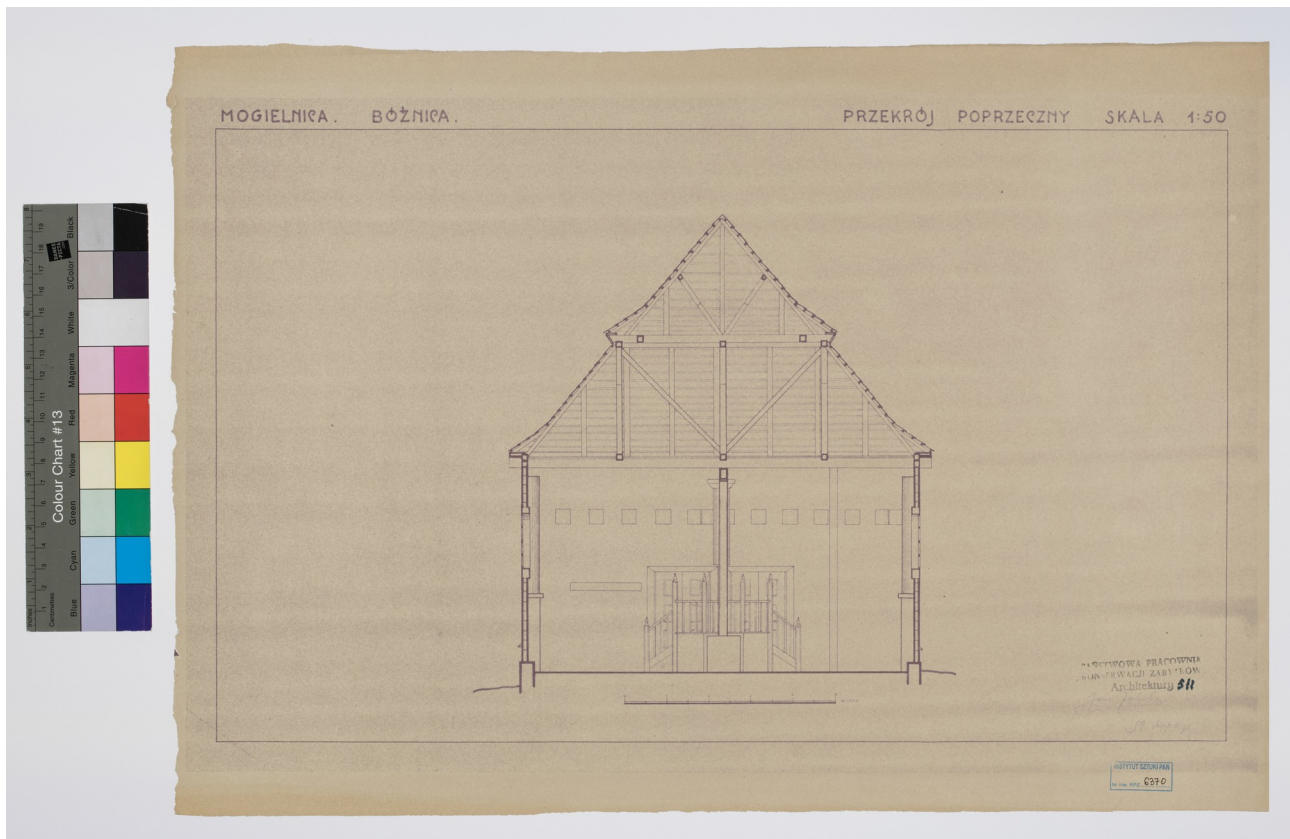


Fig. 16 007_Mogielnica_IS_PAN_section_03

Type Survey drawing

Description Cross section of the synagogue in Mogielnica looking towards mechitza and bimah

Author Unknown, Illegible

Archive Collections of the Institute of Art of the Polish Academy of Sciences, Warsaw

Signature 6370

Copyright

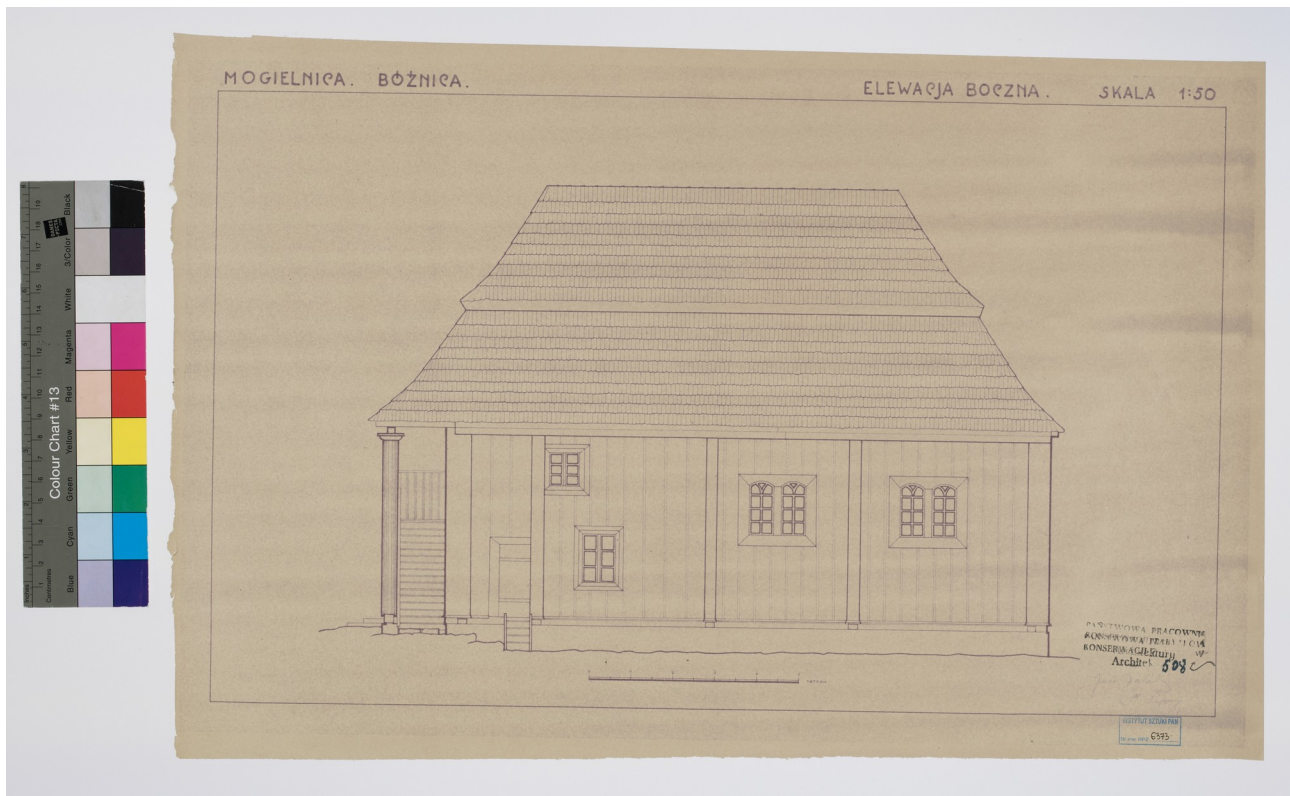


Fig. 17 013_Mogielnica_IS_PAN_elevation_04

Type Survey drawing

Description West elevation of the synagogue in Mogielnica

Author Unknown, Illegible

Archive Collections of the Institute of Art of the Polish Academy of Sciences, Warsaw

Signature 6373

Copyright



Fig. 18 011_Mogielnica_IS_PAN_elevation_02

Type Survey drawing

Description Front northern elevation of the synagogue in Mogielnica

Author Unknown, Illegible

Archive Collections of the Institute of Art of the Polish Academy of Sciences, Warsaw

Signature 6372

Copyright

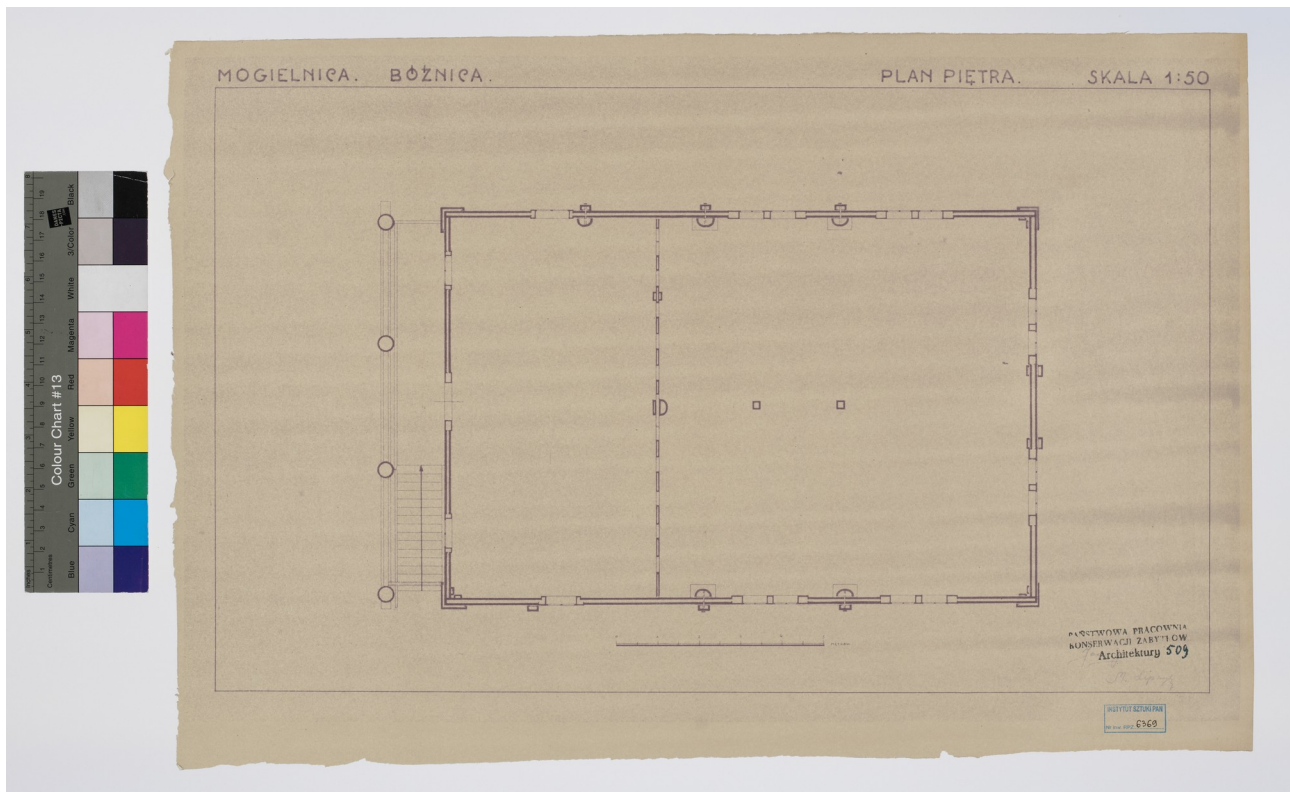


Fig. 19 004_Mogielnica_IS_PAN_plan_04

Type Survey drawing

Description First floor plan of the synagogue in Mogielnica

Author Unknown, Illegible

Archive Collections of the Institute of Art of the Polish Academy of Sciences, Warsaw

Signature 6369

Copyright

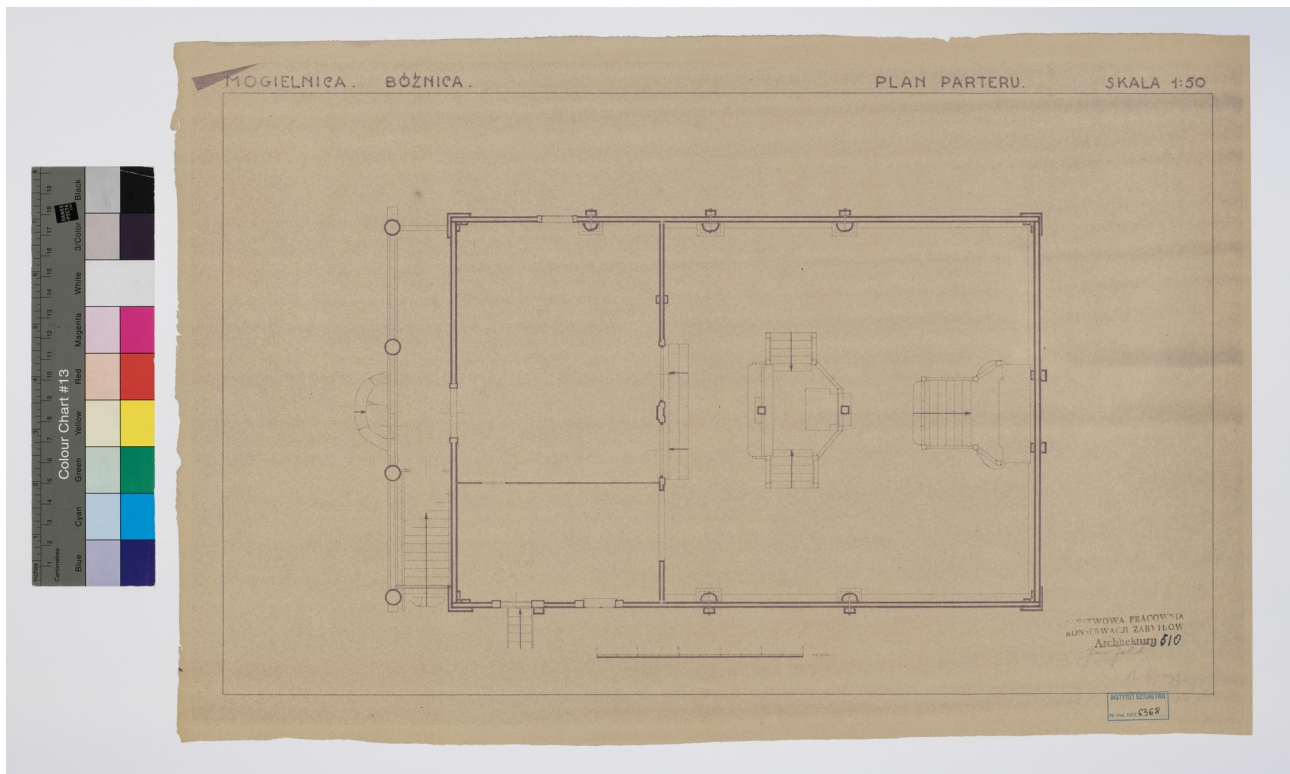


Fig. 20 002_Mogielnica_IS_PAN_plan_02

Type Survey drawing

Description First floor plan of the synagogue in Mogielnica

Author Unknown, Illegible

Archive Collections of the Institute of Art of the Polish Academy of Sciences, Warsaw

Signature 6368

Copyright



Fig. 21 015_Mogielnica_IS_PAN_view_02

Type Photograph

Description View of the synagogue in Mogielnica towards the east with the front elevation visible

Author Szymon Zajczyk

Archive Collections of the Institute of Art of the Polish Academy of Sciences, Warsaw

Signature 0000141875

Copyright



Fig. 22 016_Mogielnica_IS_PAN_view_03

Type Photograph

Description View of the synagogue in Mogielnica towards the north

Author Szymon Zajczyk

Archive Collections of the Institute of Art of the Polish Academy of Sciences, Warsaw

Signature 0000141876

Copyright

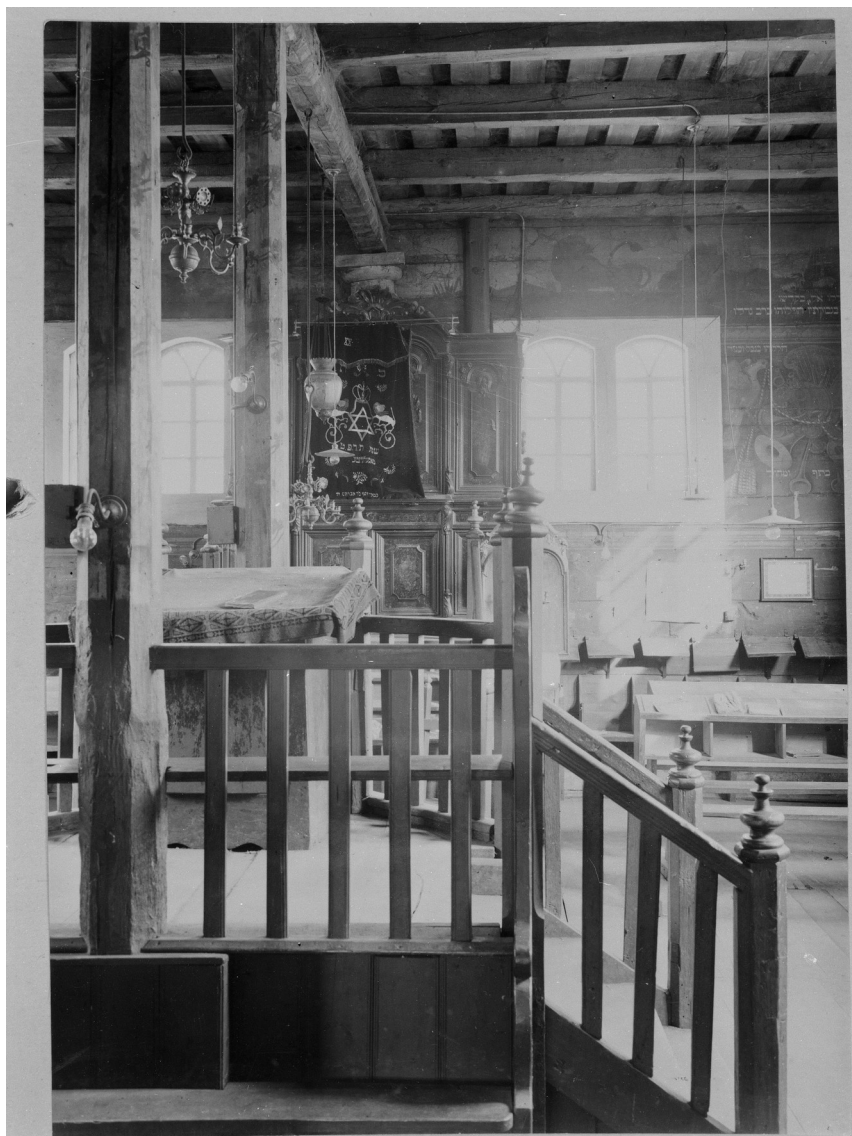


Fig. 23 017_Mogielnica_IS_PAN_interior_01

Type Photograph

Description The interior of the synagogue in Mogielnica with a view of the southern wall and Holy Ark

Author Unknown

Archive Collections of the Institute of Art of the Polish Academy of Sciences, Warsaw

Signature 0000141877

Copyright



Fig. 24 014_Mogielnica_IS_PAN_view_01

Type Photograph

Description View of the synagogue in Mogielnica towards the south with the front elevation visible

Author Szymon Zajczyk

Archive Collections of the Institute of Art of the Polish Academy of Sciences, Warsaw

Signature 0000159669

Copyright

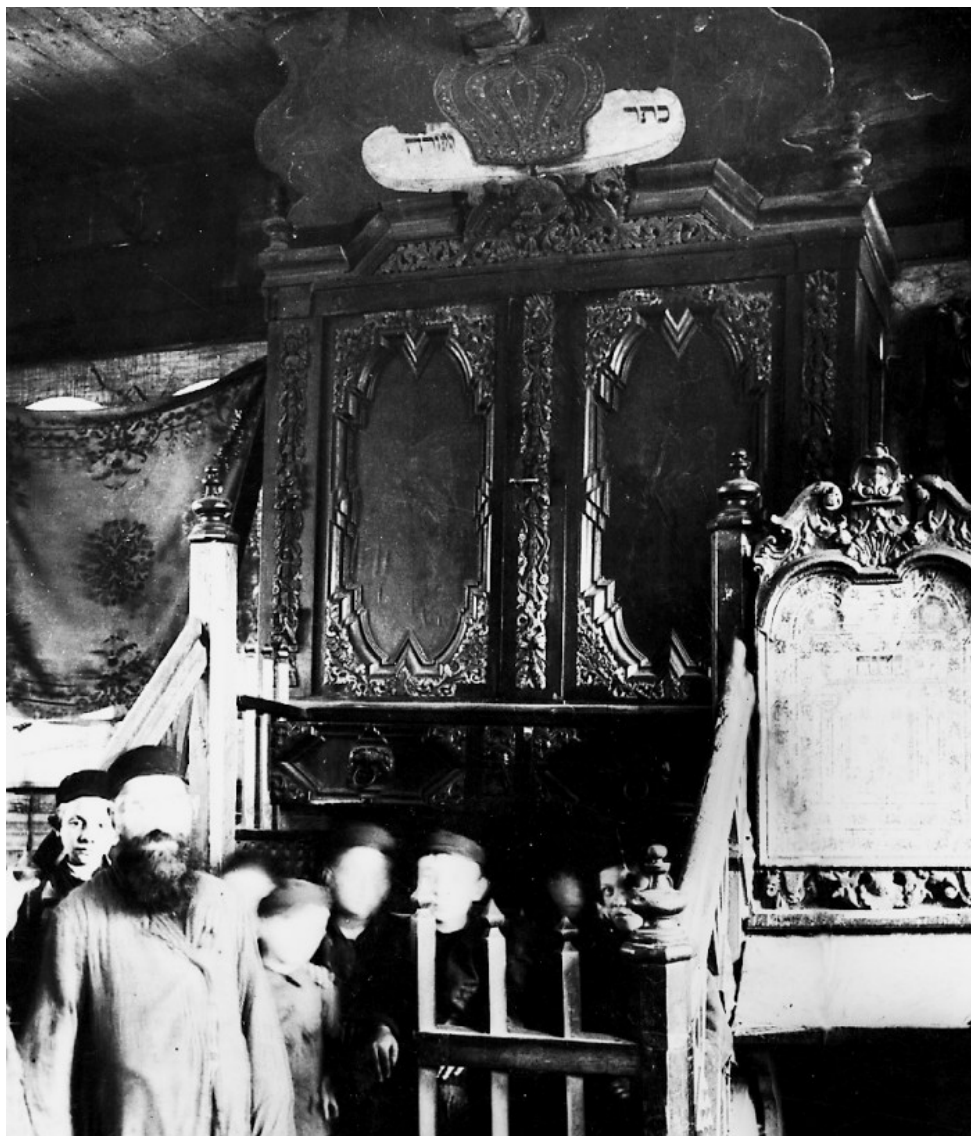


Fig. 25 018_Mogielnica_Piechotkowie_interior_01

Type Photograph

Description The interior of the synagogue in Mogielnica with Holy Ark before the reconstruction in the 1920s

Author Unkonown

Archive Collections of the Institute of Art of the Polish Academy of Sciences, Warsaw

Signature 484/388

Copyright



Fig. 26 019_Mogielnica_Piechotkowie_interior_02

Type Photograph

Description The interior of the synagogue in Mogielnica before 1921

Author Unkonown

Archive Collections of the Institute of Art of the Polish Academy of Sciences, Warsaw

Signature 485/388

Copyright



Fig. 27 020_Mogielnica_Piechotkowie_interior_03

Type Photograph

Description The interior of the synagogue in Mogielnica before 1920

Author Unkonown

Archive Collections of the Institute of Art of the Polish Academy of Sciences, Warsaw

Signature 482/388

Copyright