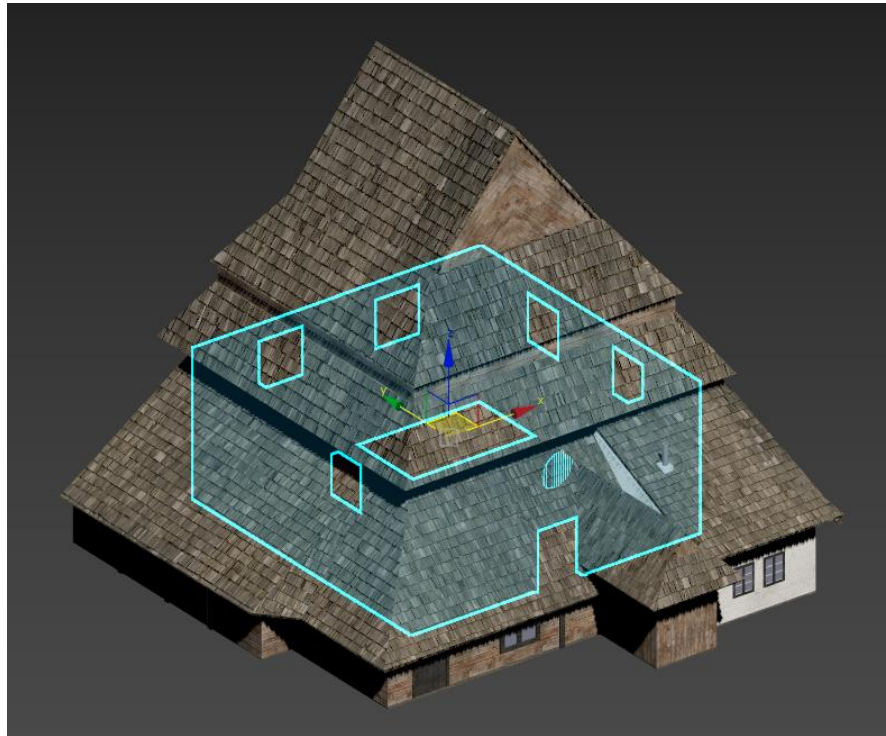


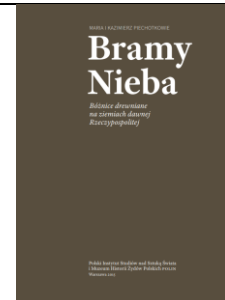
Wall type a

Reconstructed object

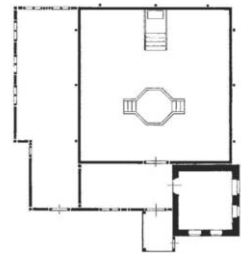


Used sources

“Bramy Nieba: Bóznice drewniane na ziemiach dawnej Rzeczypospolitej: Maria i Kazimierz Piechotkowie [2015]



Inventory drawing from “Bramy Nieba” (plan)



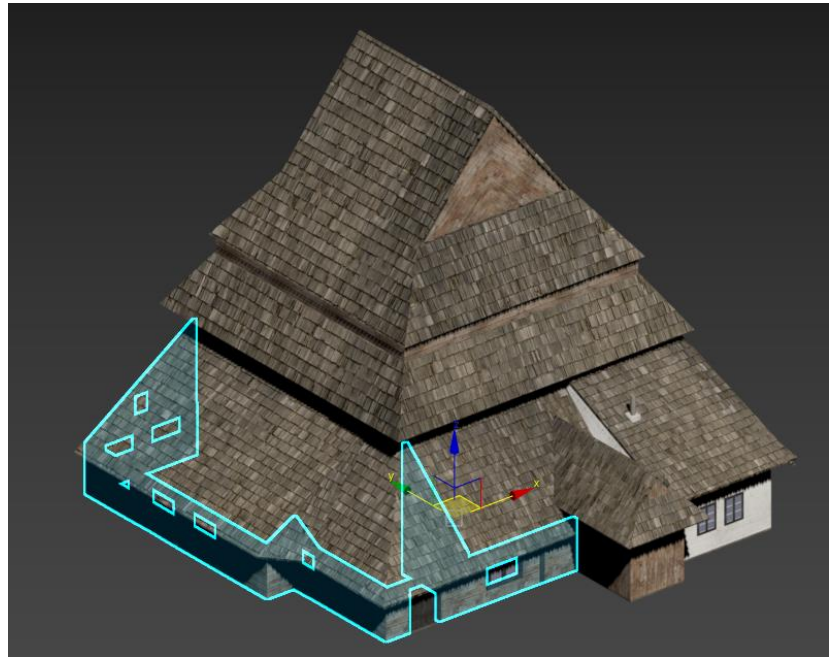
Argumentation and evaluation of the uncertainty

There are archival inventory sources directly related to the object

03-deduction

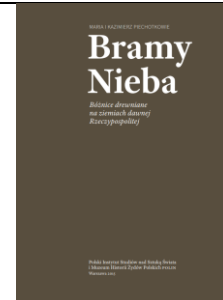
Wall type b

Reconstructed object

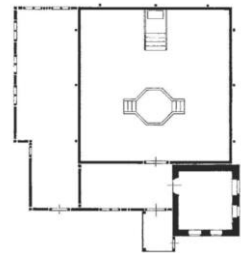


Used sources

“Bramy Nieba: Bóżnice drewniane na ziemiach dawnej Rzeczypospolitej: Maria i Kazimierz Piechotkowie [2015]



Inventory drawing from “Bramy Nieba” (plan)



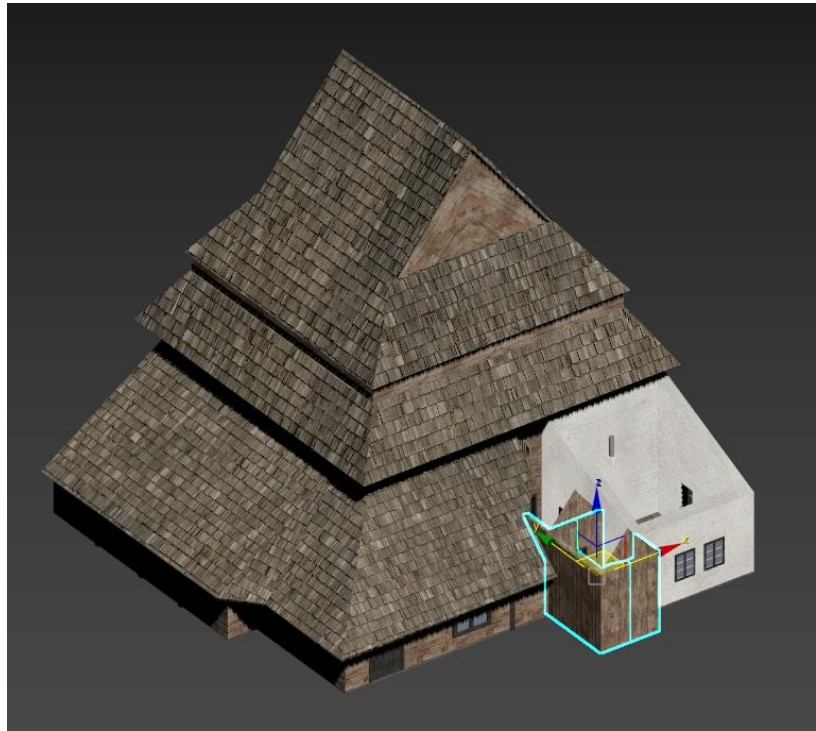
Argumentation and evaluation of the uncertainty

There are archival inventory sources directly related to the object

03-deduction

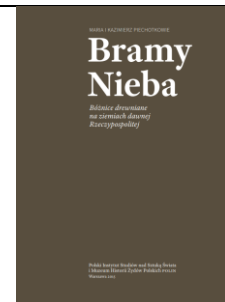
Wall type c

Reconstructed object

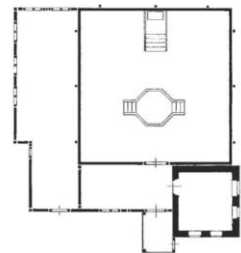


Used sources

“Bramy Nieba: Bóżnice drewniane na ziemiach dawnej Rzeczypospolitej: Maria i Kazimierz Piechotkowie [2015]



Inventory drawing from “Bramy Nieba” [plan]



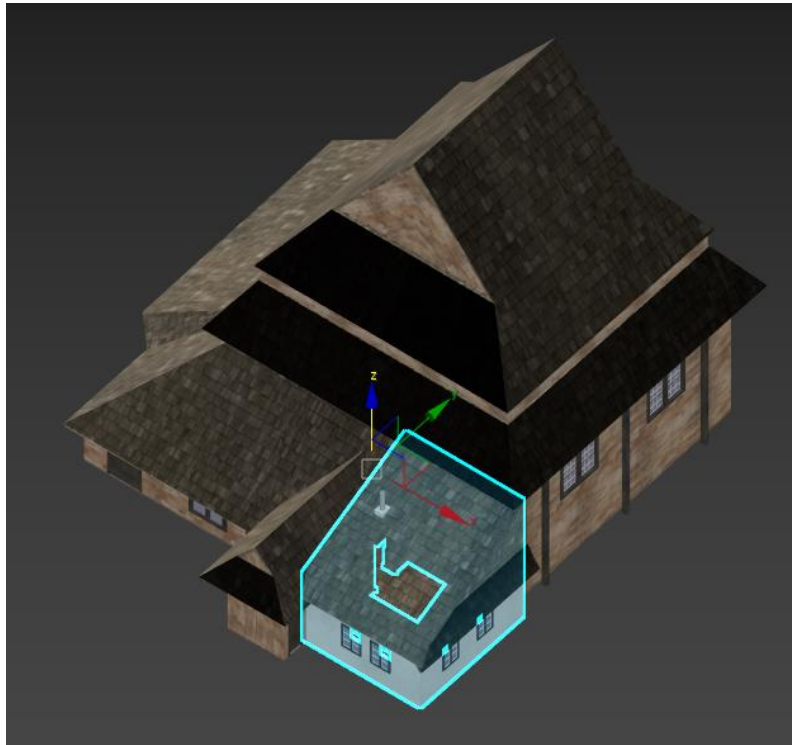
Argumentation and evaluation of the uncertainty

There are archival inventory sources directly related to the object

03-deduction

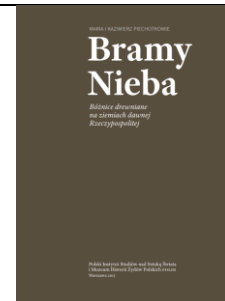
Wall type d

Reconstructed object

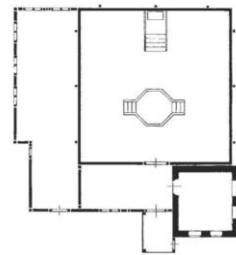


Used sources

“Bramy Nieba: Bóznice drewniane na ziemiach dawnej Rzeczypospolitej: Maria i Kazimierz Piechotkowie [2015]



Inventory drawing from “Bramy Nieba” (plan)

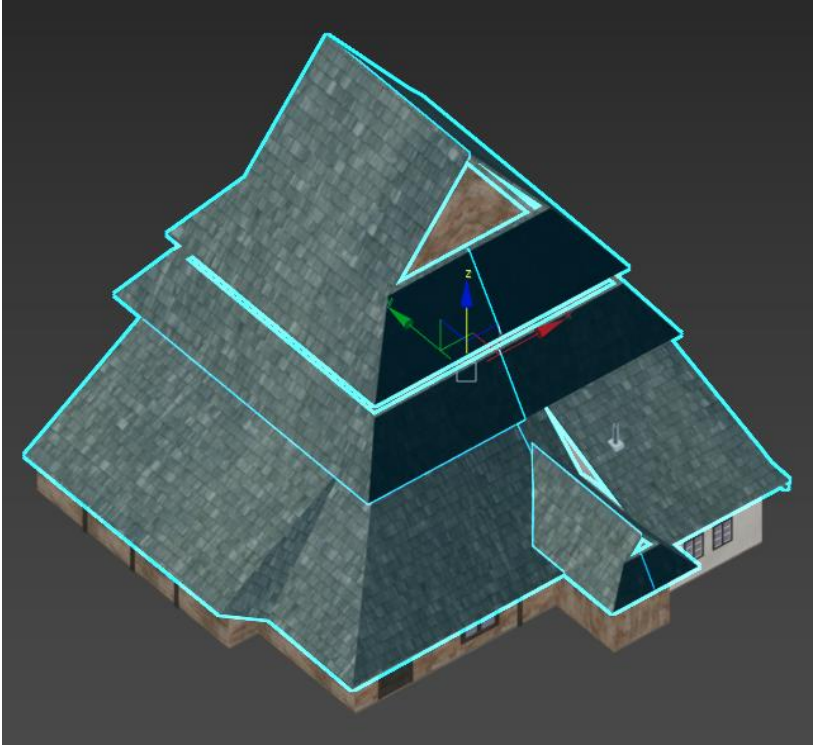

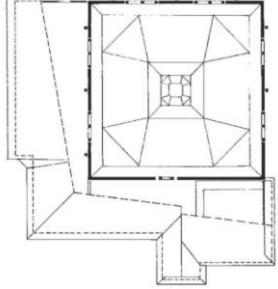


Argumentation and evaluation of the uncertainty

There are archival inventory sources directly related to the object

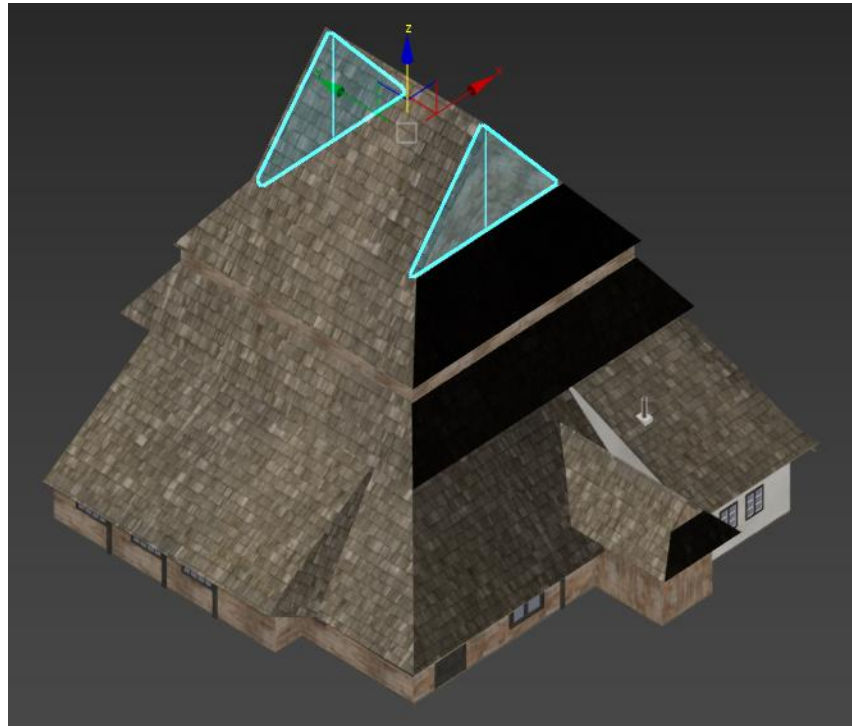
03-deduction

Roof type a

Reconstructed object		
Used sources	Archival photography (1913) from "Bramy Nieba"	
	Inventory drawing from "Bramy Nieba" (plan)	
Argumentation and evaluation of the uncertainty	There are archival inventory sources directly related to the object	03-deduction

Roof type b

Reconstructed object

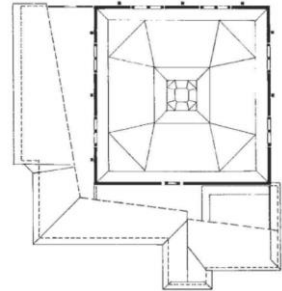


Archival photography [1913]
from "Bramy Nieba"



Used sources

Inventory drawing from
"Bramy Nieba" (plan)



Argumentation
and
evaluation of
the
uncertainty

There are archival inventory
sources directly related to
the object

03-deduction

Window type a

Reconstructed object

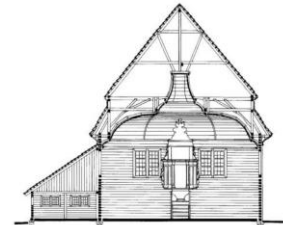


Used sources

Archival drawing from "Bramy Nieba"



Inventory drawing from "Bramy Nieba" (section)



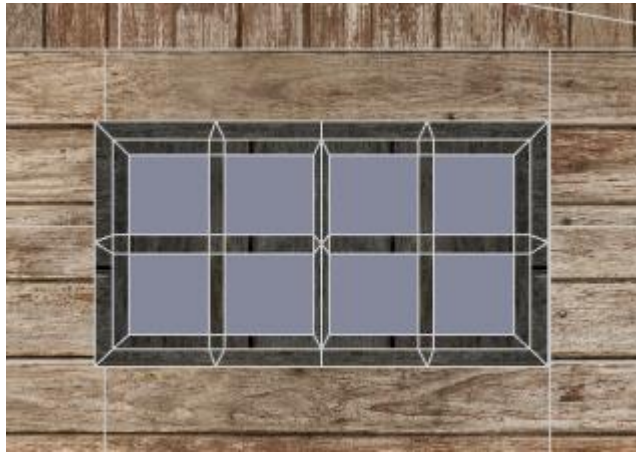
Argumentation and evaluation of the uncertainty

There are archival inventory sources directly related to the object

03-deduction

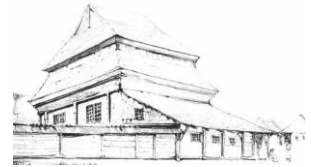
Window type b

Reconstructed object

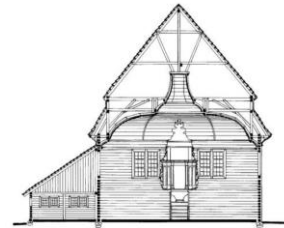


Used sources

Archival drawing from "Bramy Nieba"



Inventory drawing from "Bramy Nieba" (section)



Argumentation and evaluation of the uncertainty

There are archival inventory sources directly related to the object

03-deduction

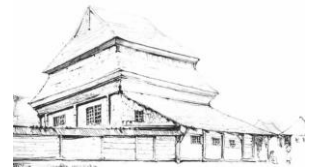
Window type c

Reconstructed object

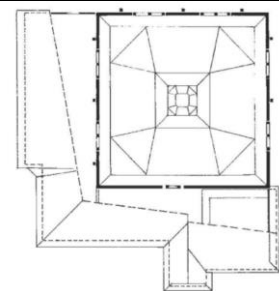


Used sources

Archival drawing from "Bramy Nieba"



Inventory drawing from "Bramy Nieba" (plan)



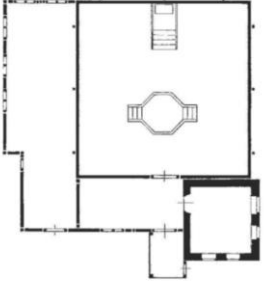


Argumentation and evaluation of the uncertainty

There are archival inventory sources directly related to the object

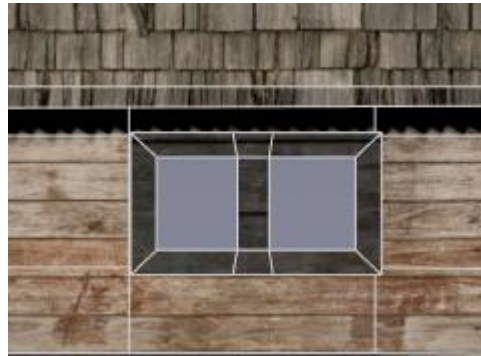
03-deduction

Window type d

<p>Reconstructed object</p>		
<p>Used sources</p>	<p>Archival photography from "Bramy Nieba"</p>	
	<p>Inventory drawing from "Bramy Nieba" (plan)</p>	
<p>Argumentation and evaluation of the uncertainty</p>	<p>There are archival inventory sources directly related to the object</p>	<p>03-deduction</p>

Window type e

Reconstructed object



Used sources

Archival photography from "Bramy Nieba"



Model made by Muzeum Budownictwa Ludowego w Sanoku






Argumentation and evaluation of the uncertainty

There are archival inventory sources directly related to the object

03-deduction

Window type f

<p>Reconstructed object</p>		
<p>Used sources</p>	<p>Archival photograph from "Bramy Nieba"</p>	
	<p>Archival drawing from "Bramy Nieba"</p>	
<p>Argumentation and evaluation of the uncertainty</p>	<p>There are archival inventory sources directly related to the object</p>	<p>03-deduction</p>

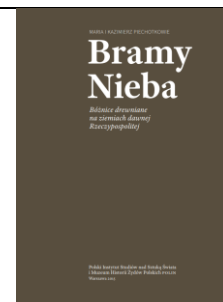
Window type g

Reconstructed object

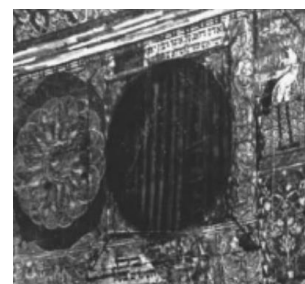


Used sources

“Bramy Nieba: Bóznice drewniane na ziemiach dawnej Rzeczypospolitej: Maria i Kazimierz Piechotkowie [2015]



Archival photograph from “Bramy Nieba”






Argumentation and evaluation of the uncertainty

There are archival inventory sources directly related to the object

03-deduction

Door type a

<p>Reconstructed object</p>		
<p>Used sources</p>	<p>Archival photography (1913) from "Bramy Nieba"</p>	
	<p>Archival drawing from "Bramy Nieba"</p>	
<p>Argumentation and evaluation of the uncertainty</p>	<p>There are archival inventory sources directly related to the object</p>	<p>03-deduction</p>

Bema

Reconstructed object

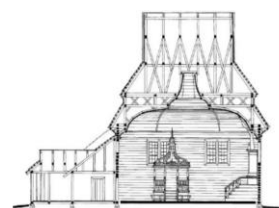


Used sources

Reconstruction model (POLIN)



Inventory drawing from "Bramy Nieba" (section)



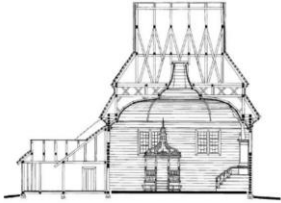


Argumentation and evaluation of the uncertainty

There are archival inventory sources directly related to the object

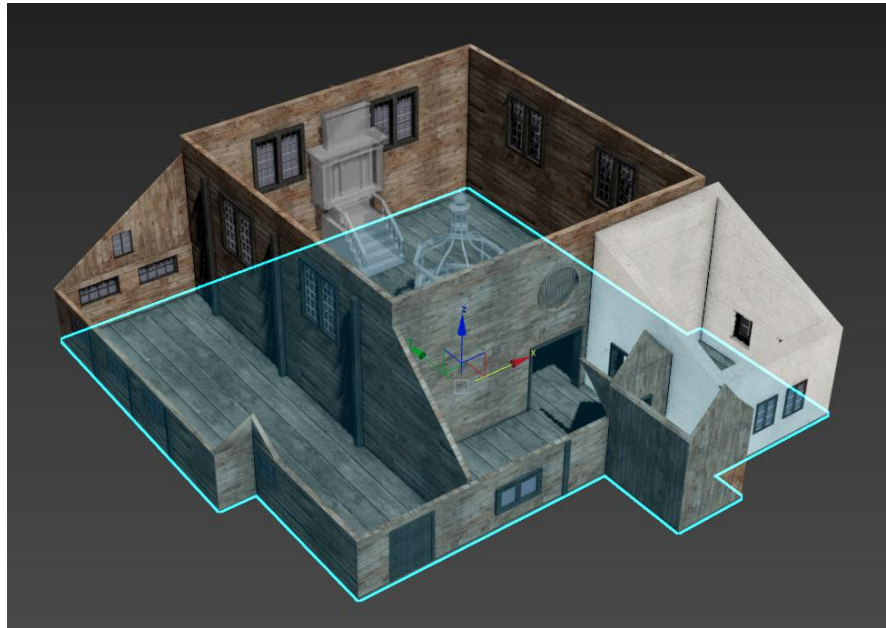
03-deduction

Aron ha-kodesh

<p>Reconstructed object</p>		
<p>Used sources</p>	<p>Reconstruction model (POLIN)</p>	
	<p>Inventory drawing from "Bramy Nieba" (section)</p>	
<p>Argumentation and evaluation of the uncertainty</p>	<p>There are archival inventory sources directly related to the object</p>	<p>03-deduction</p>

Floor

Reconstructed object



Inventory drawing from
"Bramy Nieba" (plan)



Used sources

Archival photography from
"Bramy Nieba"



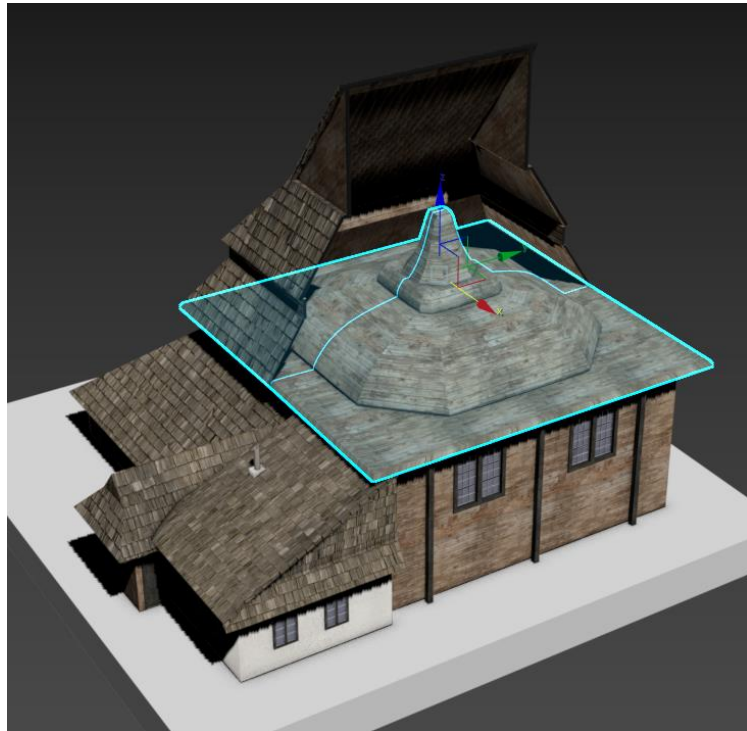
Argumentation and evaluation of the uncertainty

There are archival inventory sources directly related to the object

03-deduction

Ceiling

Reconstructed object

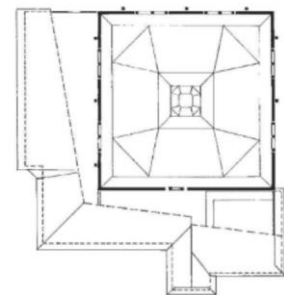


Used sources

Reconstruction model
(POLIN)



Inventory drawing from
"Bramy Nieba" (plan)



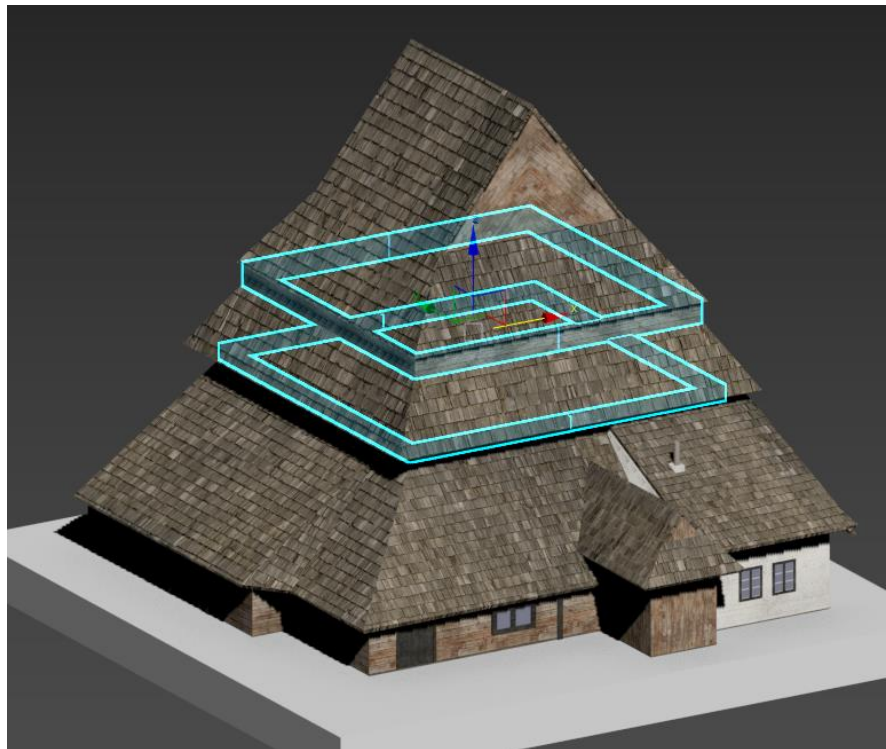
Argumentation
and
evaluation of
the
uncertainty

There are archival inventory sources directly related to the object

03-deduction

Cornice

Reconstructed object

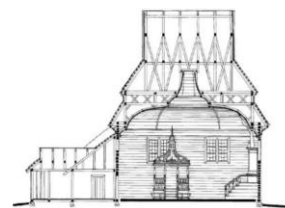


Used sources

Archival photography (1913)
from "Bramy Nieba"



Inventory drawing from
"Bramy Nieba" (section)



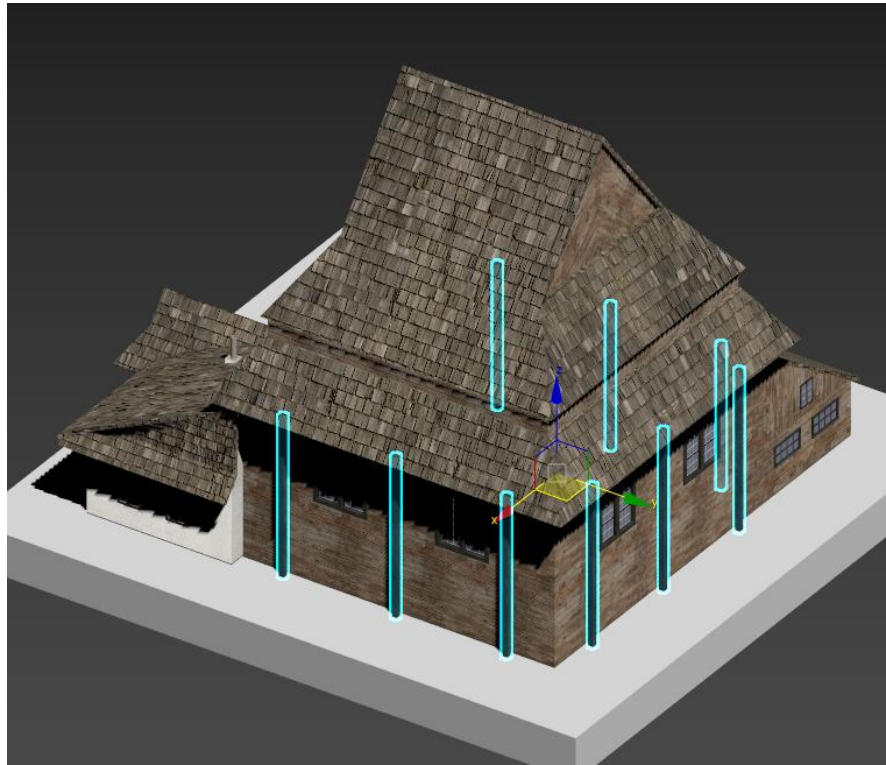
Argumentation
and
evaluation of
the
uncertainty

There are archival inventory
sources directly related to
the object

03-deduction

Pillars type a

Reconstructed object

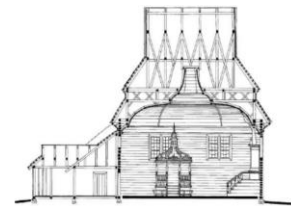


Used sources

Archival photography (1913)
from "Bramy Nieba"



Inventory drawing from
"Bramy Nieba" (section)

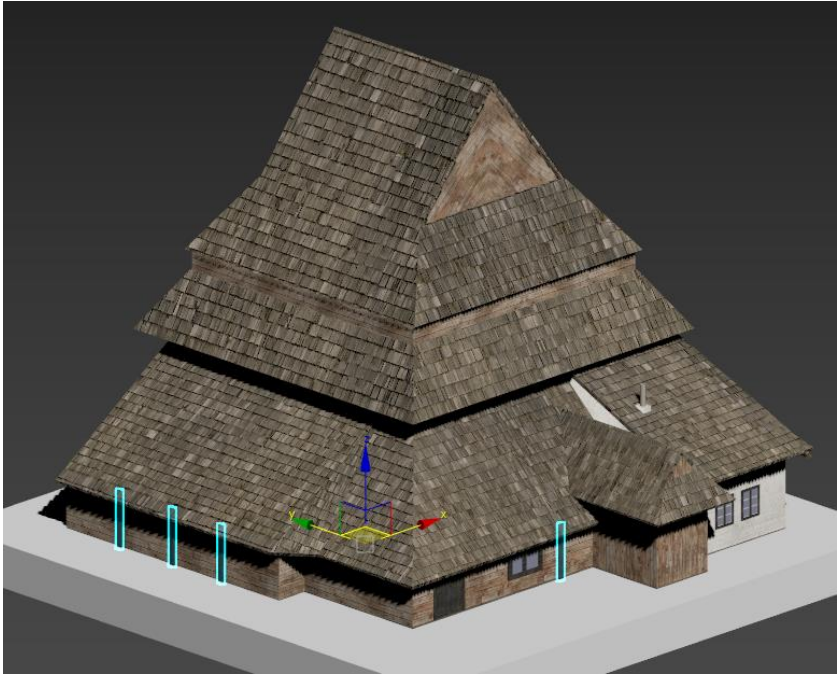




Argumentation
and
evaluation of
the
uncertainty

There are archival inventory
sources directly related to
the object

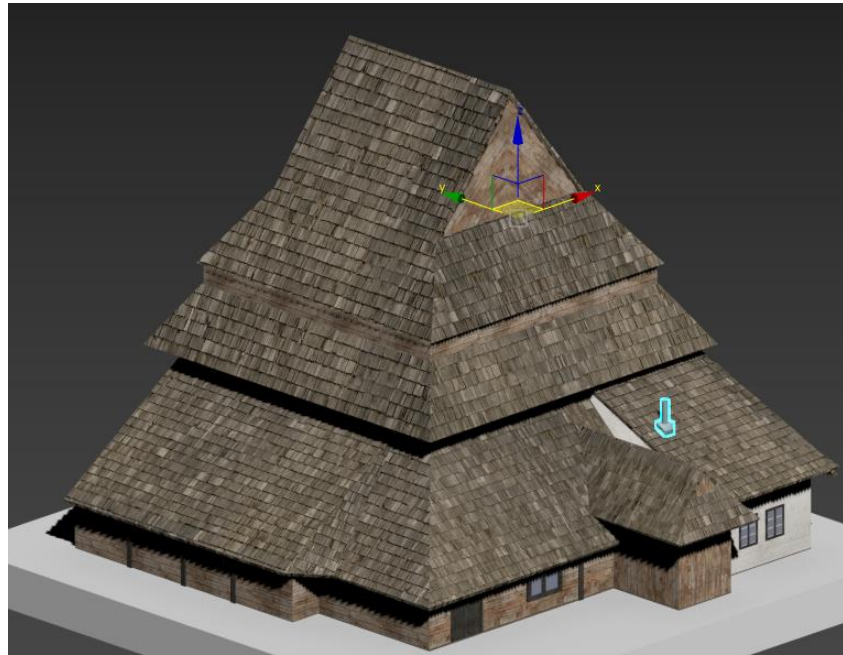
03-deduction

Pillars type b

<p>Reconstructed object</p>		
<p>Used sources</p>	<p>Archival photography (1913) from "Bramy Nieba"</p>	
	<p>Archival photography from "Bramy Nieba"</p>	
<p>Argumentation and evaluation of the uncertainty</p>	<p>There are archival inventory sources directly related to the object</p>	<p>03-deduction</p>

Chimney

Reconstructed object



Used sources

Archival photography [1913]
from "Bramy Nieba"



Archival photography from
"Bramy Nieba"



Argumentation
and
evaluation of
the
uncertainty

There are archival inventory
sources directly related to
the object

03-deduction